

TO: Park & Recreation Commission Members  
FROM: Bill Waller, City Administrator  
Jon Steffes, Summer Recreation Director  
DATE: February 2, 2022  
RE: Meeting Notice  
Tuesday, February 8, 2022  
5:30 p.m., La Crescent City Hall  
315 Main Street

#### AGENDA

1. Introductions.
2. Consideration of meeting minutes – November 15, 2021.
3. Review preliminary recommendations, draft master plan, and priority ranking worksheets relating to the update to the City's Comprehensive Park & Recreation Plan. Representatives from MSA will be in attendance at the meeting via Zoom. Memo included.
4. Update on new park shelter at Wieser Park. To date, the City has received \$71,539.00 in donations towards the project.
5. Additional discussion items.
6. Future meeting dates.
7. Adjournment.

Please call me at 895-2595, or e-mail me at [bwaller@cityoflacscent-mn.gov](mailto:bwaller@cityoflacscent-mn.gov), if you will not be able to attend, have questions, or need more information.

Thank you.

TO: Honorable Mayor and City Council Members  
Park and Recreation Commission Members  
FROM: Bill Waller, City Administrator  
DATE: November 24, 2021  
RE: Meeting Minutes  
November 15, 2021

The La Crescent Park and Recreation Commission met at 5:30 p.m., on Monday, November 15, 2021, in the City Council Chambers at the La Crescent City Hall. The following members were present: Jon Steffes, Paul McLellan, Sarah Wetterlin, Diana Adamski, and Linda Gasper. Commission member Eileen Krenz was not in attendance. Also in attendance were Chris Fortsch and Bill Waller.

1. Brief introductions were held.
2. It was the consensus of the Commission to approve the minutes of the September 20, 2021 Park and Recreation Commission meeting as presented.
3. Eric Kiesau, representing La Crescent Youth Baseball/Softball, presented a plan to the Commission to install a new electronic scoreboard that would be installed adjacent to the power pole that is located near the well house at Veterans Park. La Crescent Youth Baseball/Softball, working with a donor, would be responsible for all of the costs associated with the improvement project. It was the consensus of the Commission to allow La Crescent Youth Baseball/Softball to proceed with the project, contingent upon confirming with La Crescent Youth Soccer that the proposed location does not impact the Soccer organizations use of the park.
4. Lisa Smith and Todd Wiedenhaft were in attendance at the meeting to review their request to install lights at the sand volleyball courts at Old Hickory Park. It was the consensus of the Commission to wait on making a recommendation on this request until more input is received and the update to the City's Comprehensive Park & Recreation Plan is completed.
5. Becky Binz and Dan Schmitt from MSA were in attendance at the meeting via Zoom to review the preliminary needs assessment findings and public input that has been received regarding the update to the City's Comprehensive Park & Recreation Plan. Included in the review were the following items: project schedule, park maps, La Crescent parks needs assessment highlights, feedback from the community survey and Farmer's Market, and preliminary ideas for Eagles Bluff, Vollenweider/Vetsch/ Stoney Point, and Horsetrack Meadows. Discussion followed on each item with members of the Commission, and input from those in attendance at the meeting.
6. It was agreed that the next meeting of the Park & Recreation Commission would be Monday, January 31, 2022, at 5:30 pm., at City Hall.
7. There being nothing further to discuss, the meeting was adjourned at approximately 7:22 pm.

# MSA Memo

---

**To:** La Crescent Park & Recreation Commission  
**From:** Becky Binz, AICP, Project Manager ([bbinz@msa-ps.com](mailto:bbinz@msa-ps.com))  
**Subject:** February 8<sup>th</sup> – Park & Recreation Plan Update-Preliminary Recommendations  
**Date:** February 1, 2022

---

MSA will be attending your February 8th meeting to review preliminary recommendations and master plans based on the feedback we have received so far. At the meeting we intend to review the following items:

1. **Project Schedule.** *(no attachment in packet)*
2. **Review Preliminary Recommendations (Chapter 5).** A draft of preliminary recommendations are included in your packet. This includes recommendations for existing parks, new parks, trail improvements, programming, and others.
3. **Review Draft Master Plans for Eagles Bluff, Vollenweider/Vetsch/Stoney Point, Horsetrack Meadows, and Wieser Park.** Draft master plans for these parks area included in your packets.
4. **Priority Ranking Worksheet.** This sheet lists recommendations for existing parks that are from the previous plan, the community survey, staff, local sports organizations, and the public open house. Please indicate whether you think each recommendation is a 1-3 year priority (1), a 3-5 year priority (2), or a long range priority (3). Please also make notes of any recommendations that you think are missing. Please return to Bill by February 28 *(attachment will be forwarded before the Feb. 8 meeting).*
5. **Next meeting - April.** We will meet in-person to present the final plan and hopefully make a recommendation to Council. This meeting should be held before PC and Council meetings.



# Recommendations



# RECOMMENDATIONS

The quantitative, qualitative, and geographic analysis discussed in Chapter 4 reveals the need for improvements to existing facilities, the acquisition and development of new sites for future recreational use, and additional trail connections. It should be noted that some of the recommendations may require considerable cooperation with others, including the citizens of La Crescent, local civic and business associations, and State agencies. In nearly every case, more detailed planning, engineering, study, budgeting, and/or discussion will be necessary before decisions are made to actually acquire land or construct recreational facilities.

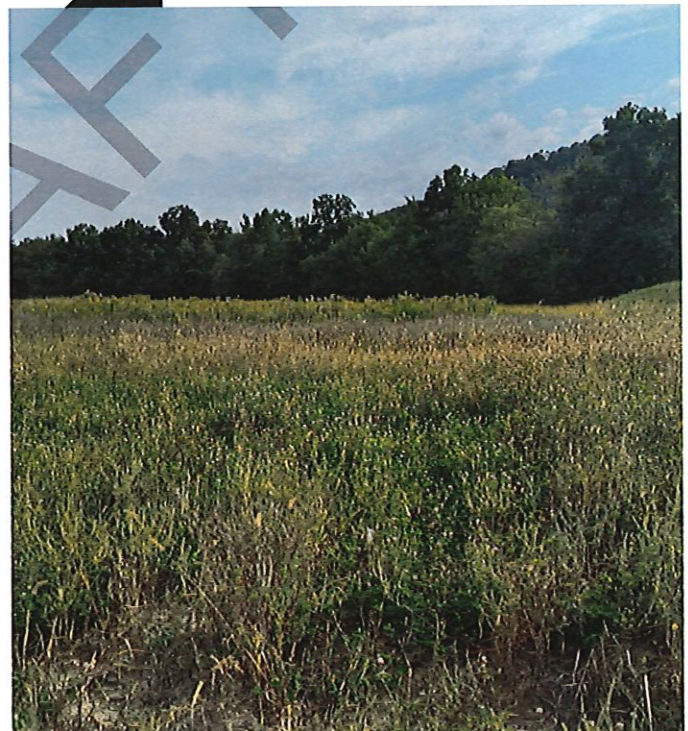
The recommendations of this plan are divided into four major sections: (1) existing park facilities (2) new park facilities; (3) trail improvements; and (4) other improvements.

The timeline for completion of recommendations is noted within each table of recommendations. High priority items should occur in the next 1-3 years (2024), Medium priority items should occur over the next three to five years (2026) and low priority items may not be completed within the next five years; however, initial planning activities may occur to bring these items closer to completion. Due to budgetary constraints it is unlikely that all of the recommendations within this chapter will be implemented in the next five years. Maintenance and improvement projects will be prioritized on an annual basis by City staff in conjunction with La Crescent's Park & Recreation Commission as part of the City's annual budget and Capital Improvement Plan (CIP).

Many of the recommendations regarding locating new park or trail facilities will be coordinated with the sale or donation of land by other parties or by obtaining easements for trails; therefore, the timing is much more variable. Acquisition projects will be implemented through donation, dedication, purchase, or a combination thereof.

## 5.1 EXISTING PARK FACILITIES

The following pages contain two-page spreads dedicated to each existing park in La Crescent. Each spread includes general information, facilities (and approximate install dates), and recommendations for improvements to existing parks. Master plans were completed for Eagles Bluff, Vollenweider/Vetsch/Stoney Point, Horsetrack Meadows, and Wieser Park and are included in this section. Some of the recommendations identified for existing parks are carried forward from the 2012 La Crescent Park and Recreation Plan. Many of the trail recommendations are from the 2017 La Crescent Blufflands Plan. The remaining recommendations reflect staff, commission, public and consultant feedback obtained during the planning process.



*Horsetrack Meadows*

# MINI PARKS





# Crescent Valley Park

Park Address: Valley Ln. & Crescent Ave.

Park Size: 0.5 Acres

## EXISTING FACILITIES

TYPE
Playground Equipment
Picnic Tables
Benches

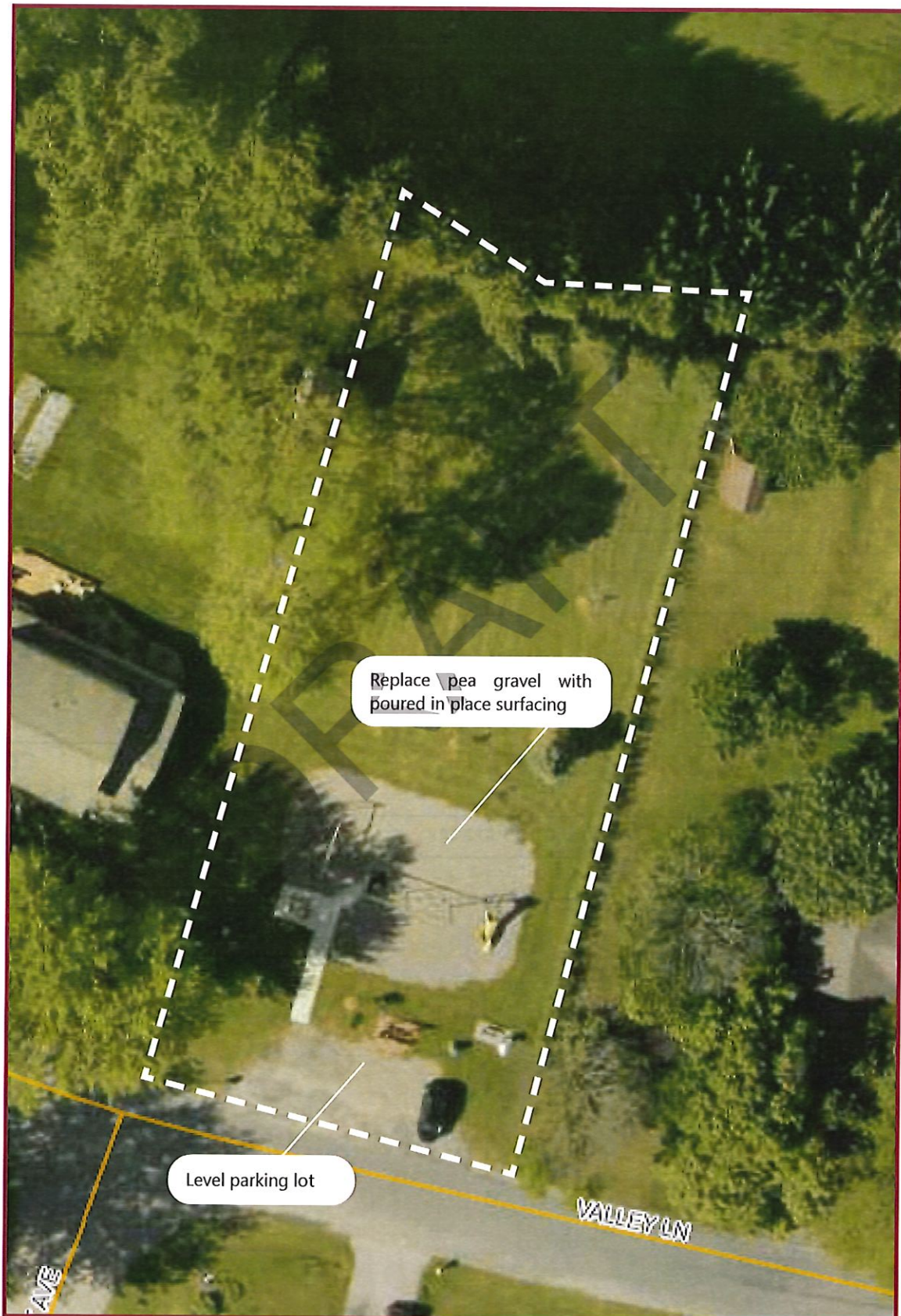
## RECOMMENDATIONS

IMPROVEMENT	PRIORITY (LOW-MED-HIGH)	COST ESTIMATE
Replace pea gravel with poured in place surfacing		
Level parking lot		TBD-AFTER CITY INPUT

\* = recommendation carried forward from the city's 2012 Park & Recreation Plan



# PARK AERIAL







# John S. Harris Park

Park Address: N. Elm St.

Park Size: 2.0 Acres

## EXISTING FACILITIES

TYPE
Playground
Playfield
Picnic Tables
Benches

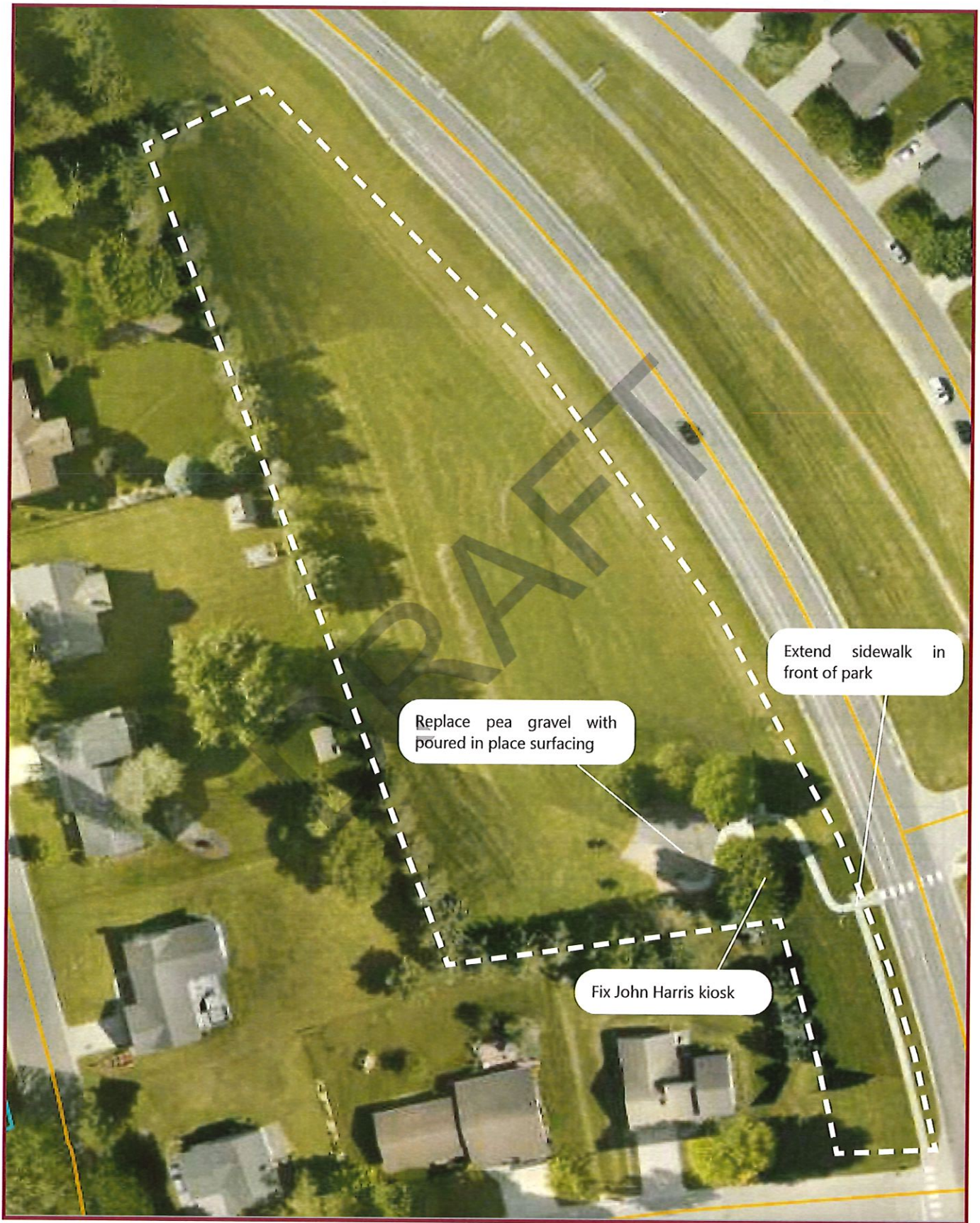
## RECOMMENDATIONS

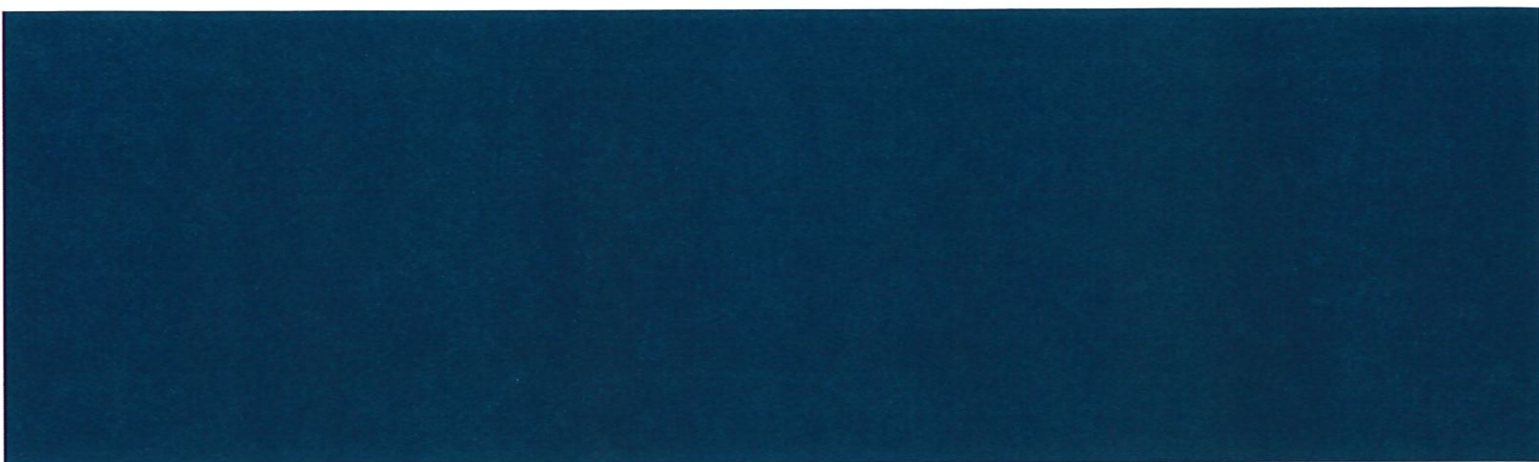
IMPROVEMENT	PRIORITY (LOW-MED-HIGH)	COST ESTIMATE
Extend sidewalk in front of park		
Fix John Harris kiosk		TBD-AFTER CITY INPUT
Replace pea gravel with poured in place surfacing		

\* = recommendation carried forward from the city's 2012 Park & Recreation Plan



# PARK AERIAL





# NEIGHBORHOOD PARKS





# Valley South Park

Park Address: Jupiter St. & S. 11th St.

Park Size: 4.0 Acres

## EXISTING FACILITIES

TYPE
Playground
Playfield
Sledding Hill
Picnic Tables

## RECOMMENDATIONS

IMPROVEMENT	PRIORITY (LOW-MED-HIGH)	COST ESTIMATE
Add restroom	TBD-AFTER CITY INPUT	
Update playground		
Replace pea gravel with poured in place surfacing		

\* = recommendation carried forward from the city's 2012 Park & Recreation Plan



# PARK AERIAL







# Wieser Memorial Park

Park Address: 1811 County 6

Park Size: 5.9 Acres

## EXISTING FACILITIES

TYPE
Playground
Baseball Field
Volleyball Court
Open Air Shelter
Restroom
Parking Lot



**SHELTER**



**SLIDE & SWINGS**





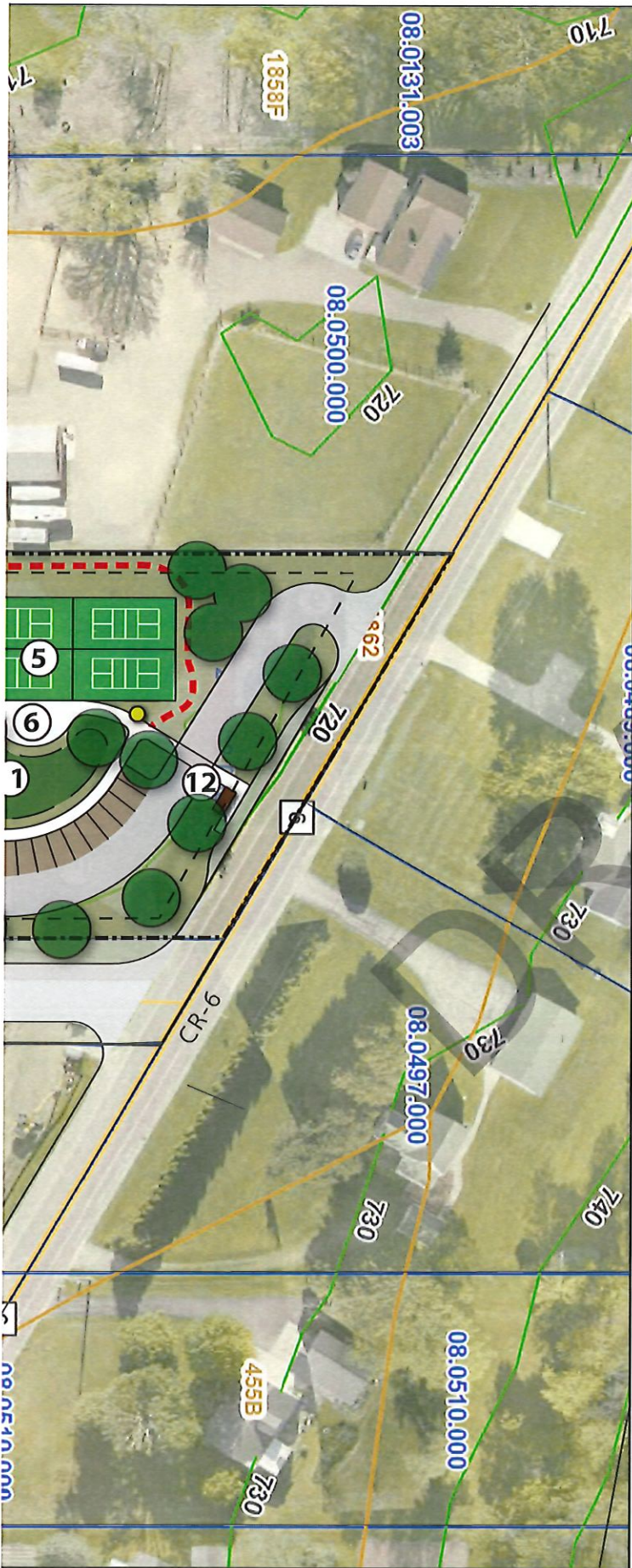




# WIESER PARK

## CONCEPTUAL MASTER PLAN

### OPTION A



- ① Shelter/Restrooms  
(possible solar panels)
- ② Restroom
- ③ Playground
- ④ Splash Pad
- ⑤ Pickleball Courts (4)
- ⑥ Monument
- ⑦ Plaza/Seating Area
- ⑧ Shade(s)
- ⑨ Storage/Equipment Building and Pergola
- ⑩ Multi-Use Open Space
- ⑪ Stormwater/Rain Garden
- ⑫ Transit Stop
- ⑬ Existing Open Shelter
- Landscaping
- Trees
- Walking Trail
- Bike Racks
- P Parking
- P\* Parking - Possible Permeable Pavement

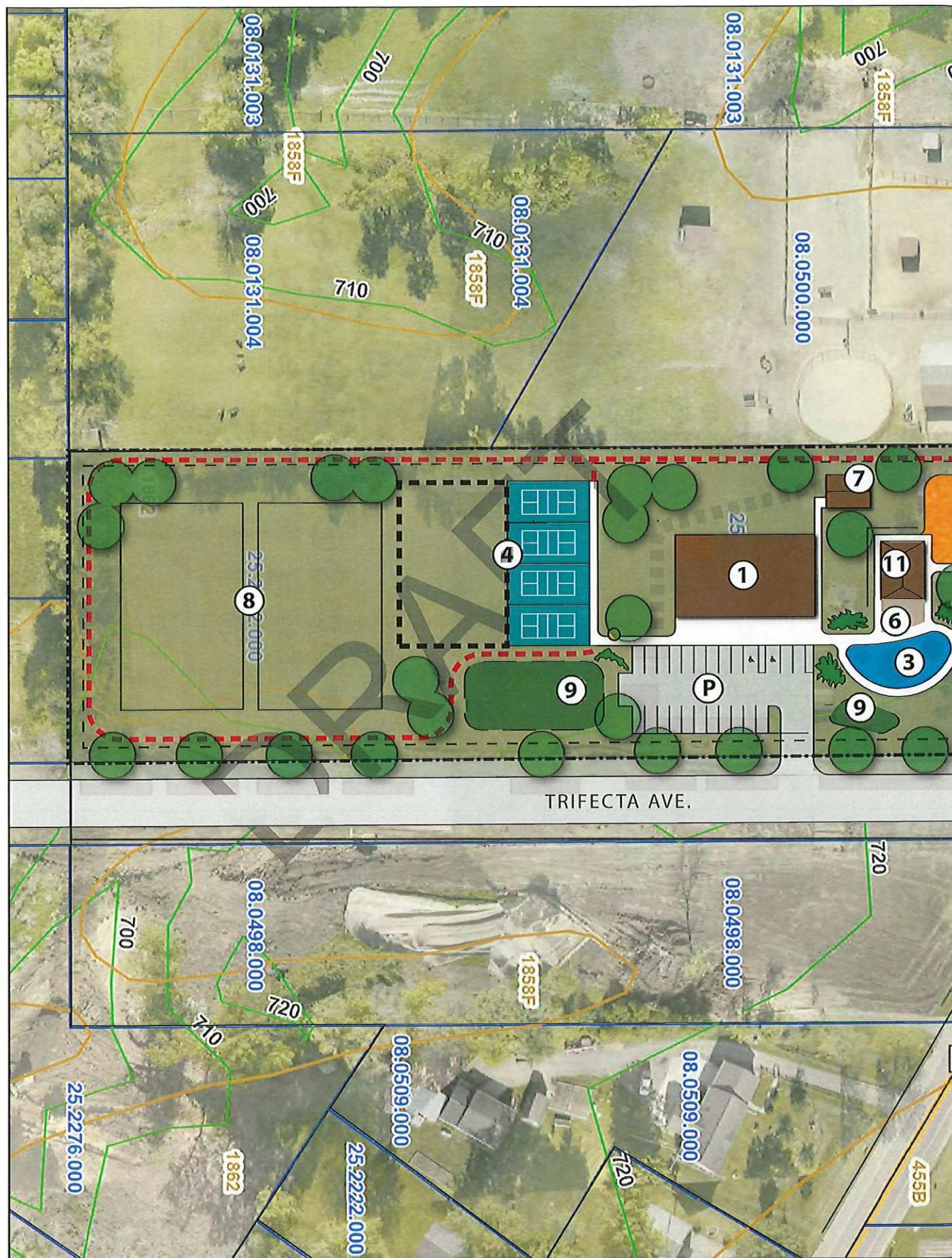
**DRAFT**  
February 1, 2021

0 40' 80'



**MSA**







# WIESER PARK

## CONCEPTUAL MASTER PLAN

### OPTION B

- ① Shelter/Restrooms  
(possible solar panels)
- ② Playground
- ③ Splash Pad
- ④ Pickleball Courts (4)  
(possible expansion South)
- ⑤ Monument
- ⑥ Plaza/Seating Area
- ⑦ Storage/Equipment Building
- ⑧ Multi-Use Open Space
- ⑨ Stormwater/Rain Garden
- ⑩ Transit Stop
- ⑪ Existing Open Shelter
- ⑫ Berm
- Landscaping
- Trees
- Walking Trail
- Bike Racks
- P Parking
- P\* Parking - Possible Permeable Pavement

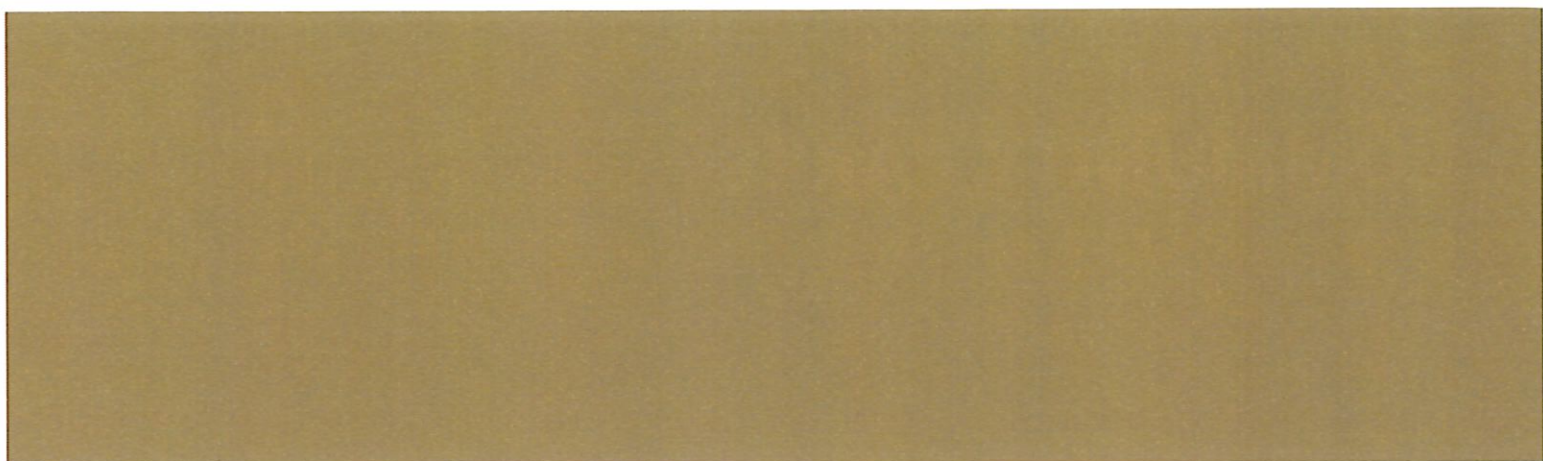
**DRAFT**  
February 1, 2021

0 40' 80'



**MSA**





# COMMUNITY PARKS





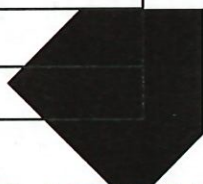
# Abnet Field

Park Address: 520 S. 14th St.

Park Size: 10.4 Acres

## EXISTING FACILITIES

TYPE
Baseball Fields (2)
Soccer Field
Playfield
Ice Skating/Hockey (Indoor)
Open-Air Shelter
Picnic Tables
Parking Lot



## RECOMMENDATIONS

IMPROVEMENT	PRIORITY (LOW-MED-HIGH)	COST ESTIMATE
*Add pickleball courts (6) that can be overlaid with an outdoor skating rink during winter months	TBD-AFTER CITY INPUT	
Add playground equipment outside of the Ice Arena at SE corner		
Extend sidewalk at NE corner of park to connect to ballfields and shelter		
Remove orange posts on west side of park		
Add batting cage		
Add score board		
Add concessions		



# PARK AERIAL



IMPROVEMENT	PRIORITY (LOW-MED-HIGH)	COST ESTIMATE
Add storage building for sport orgs/city use (12x10 or 12x16)		
Partner with the School District to add dugout roofs		
Add lighting to ballfields		

\* = recommendation carried forward from the city's 2012 Park & Recreation Plan





# Frank J. Kistler Memorial Park

Park Address: 608 S. 7th St.

Park Size: 5.4 Acres

## EXISTING FACILITIES

TYPE
Pool
Tennis Court (3)
Playground Equipment
Volleyball Court
Parking Lot



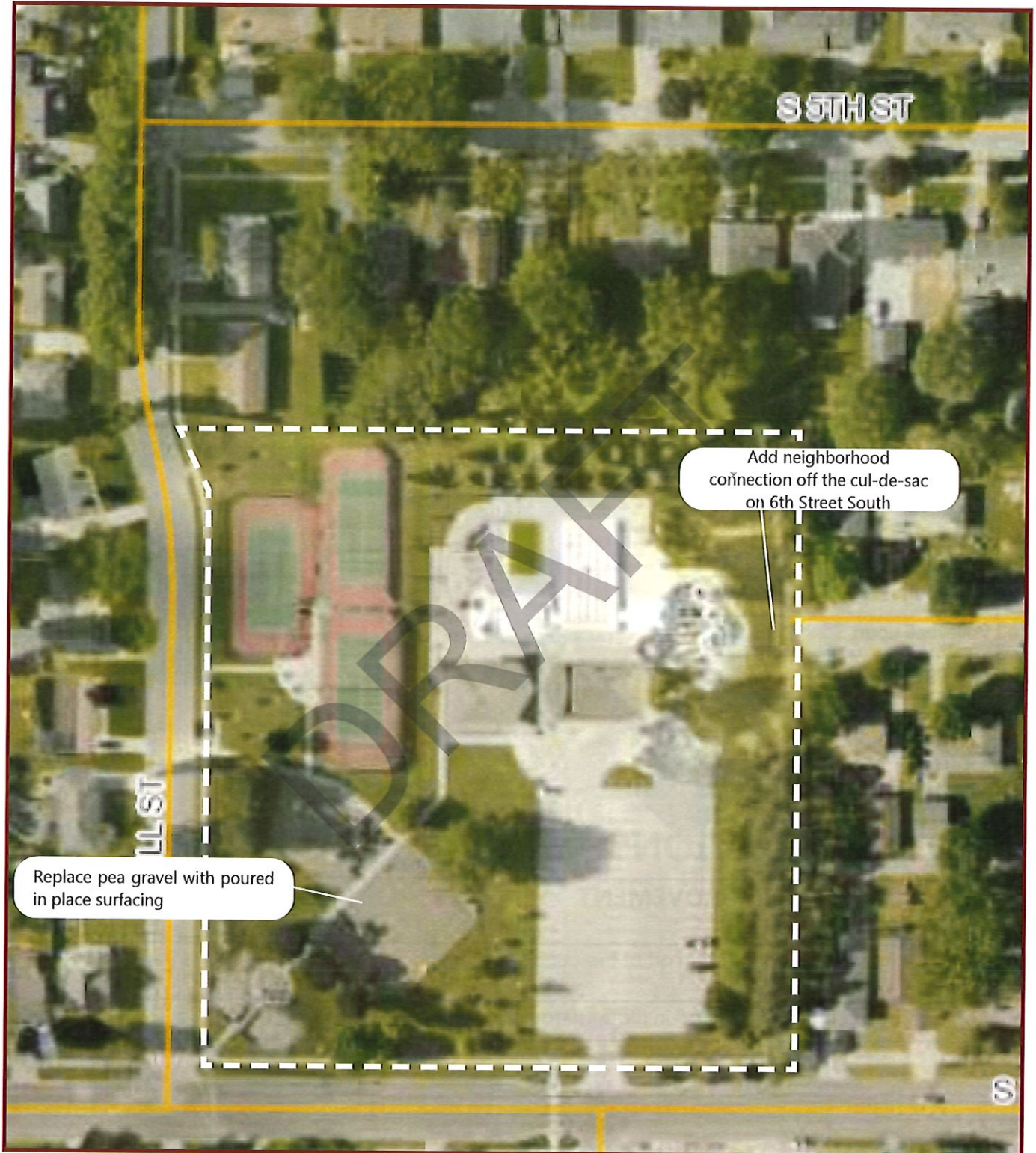
## RECOMMENDATIONS

IMPROVEMENT	PRIORITY (LOW-MED-HIGH)	COST ESTIMATE
*Add neighborhood connection off of the cul-de-sac on 6th Street South	TBD-AFTER CITY INPUT	
Replace pea gravel with poured in place surfacing.		

\* = recommendation carried forward from the city's 2012 Park & Recreation Plan



# PARK AERIAL







# Old Hickory Park

Park Address: 1200 Johnathan Ln.

Park Size: 17.8 Acres

## EXISTING FACILITIES

TYPE
Playground Equipment
Baseball Fields
Basketball Court
Volleyball Court
Open-Air Shelter
Picnic Tables
Parking Lot
Ice Skating/Hockey
Restrooms
Soccer Fields

## RECOMMENDATIONS

IMPROVEMENT	PRIORITY (LOW-MED-HIGH)	COST ESTIMATE
*Establish prairie plantings in stormwater retention area	TBD-AFTER CITY INPUT	
*Add path connecting sidewalk along Red Apple Dr to basketball court, playground/shelter, and ballfield		
* Pave gravel parking lot serving the other shelter and playground area		
Add storage space onto existing shelter (12x10 or 12x16)		
Add concessions onto existing shelters		
Consider as an alternative for ice rink if not at Abnet Field		
Add scoreboard		



# PARK AERIAL



IMPROVEMENT	PRIORITY (LOW-MED-HIGH)	COST ESTIMATE
Partner with School District to add dugout roofs		
Add lighting to ballfields		

\* = recommendation carried forward from the city's 2012 Park & Recreation Plan





# Veteran's Park

Park Address: 595 Veterans Parkway

Park Size: 8 Acres

## EXISTING FACILITIES

TYPE
Playground Equipment
Baseball Fields
Soccer Field
Skate Park
Bike/Walking Trail

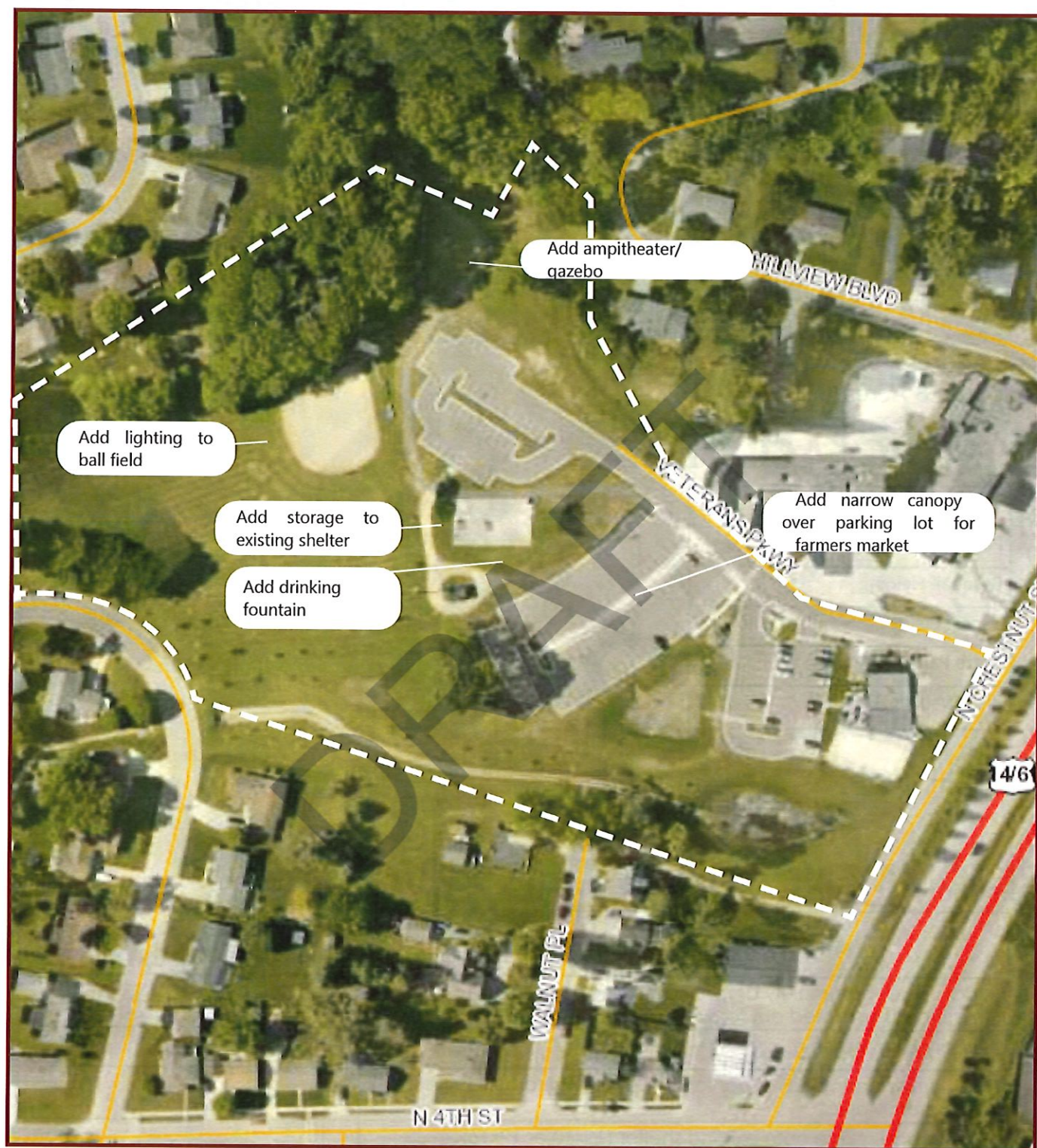
## RECOMMENDATIONS

IMPROVEMENT	PRIORITY (LOW-MED-HIGH)	COST ESTIMATE
*Add a small community amphitheater that can be used for concerts or rented out for weddings	TBD-AFTER CITY INPUT	
Add drinking fountain		
Add narrow canopy over portion of parking lot to be used by Farmers Market		
Add storage space onto existing shelter (12x10 or 12x16)		
Add lighting to ball fields.		

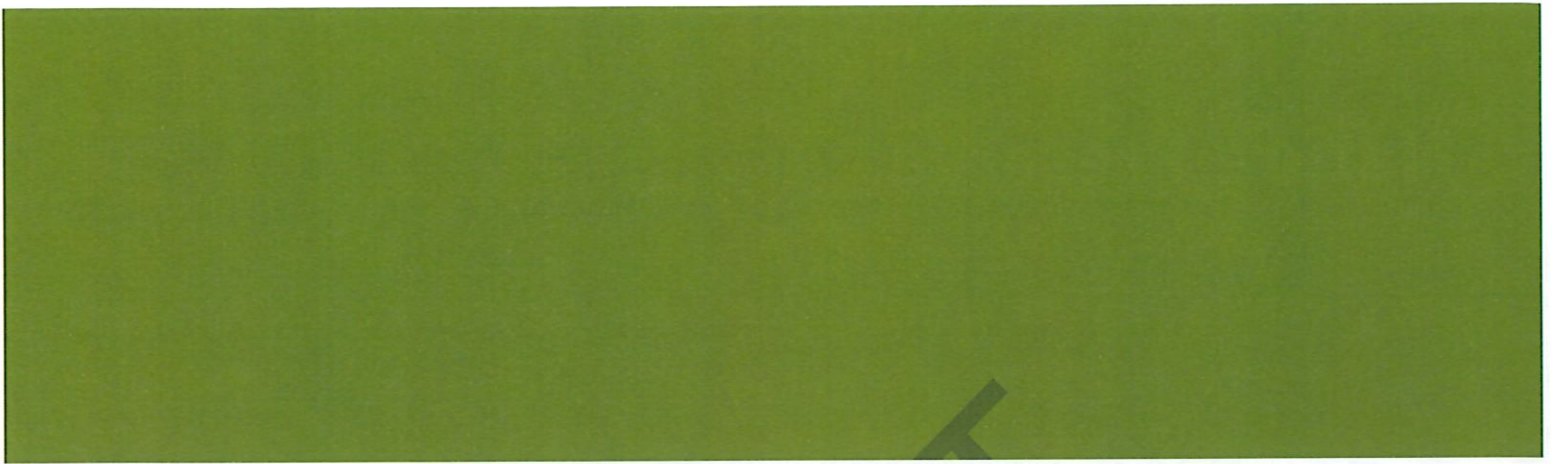
\* = recommendation carried forward from the city's 2012 Park & Recreation Plan



# PARK AERIAL







# Nature Preserve





# North End Park

Park Address: Ambrosia Street  
Park Size: 10 Acres

## EXISTING FACILITIES

TYPE
Open Space

## RECOMMENDATIONS

IMPROVEMENT	PRIORITY (LOW-MED-HIGH)	COST ESTIMATE
*Add walking trails with scenic overlooks	TBD-AFTER CITY INPUT	
Buckthorn removal needed where rows of apple trees were previously removed.		

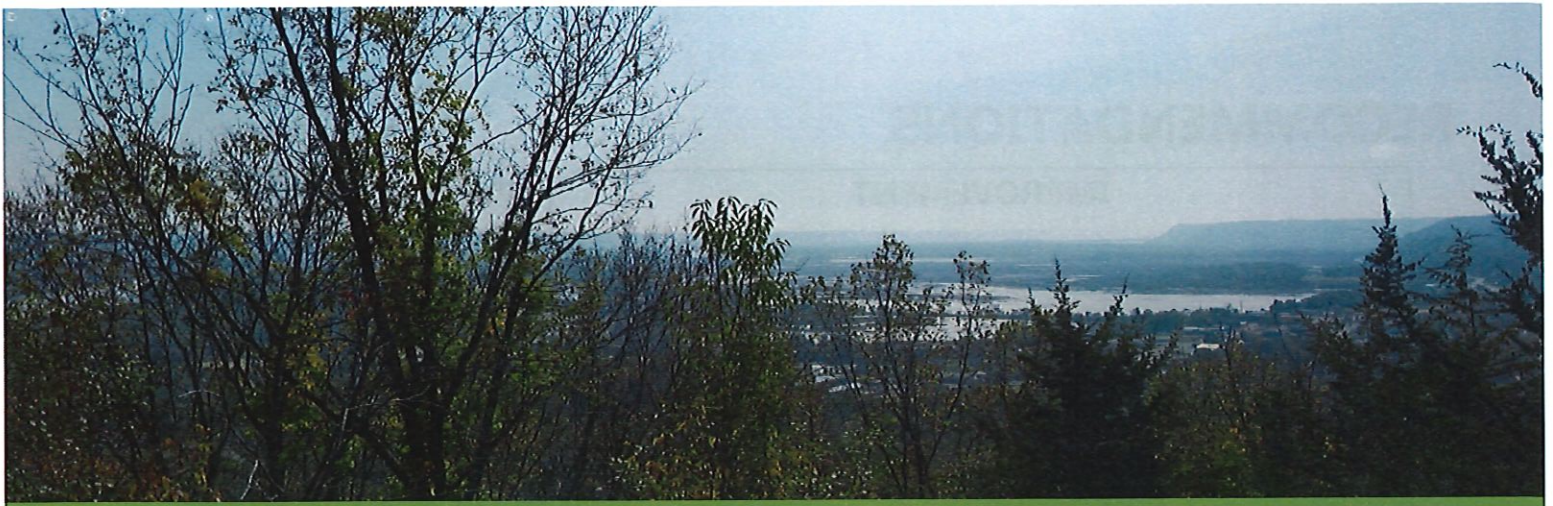
\* = recommendation carried forward from the city's 2012 Park & Recreation Plan



# PARK AERIAL







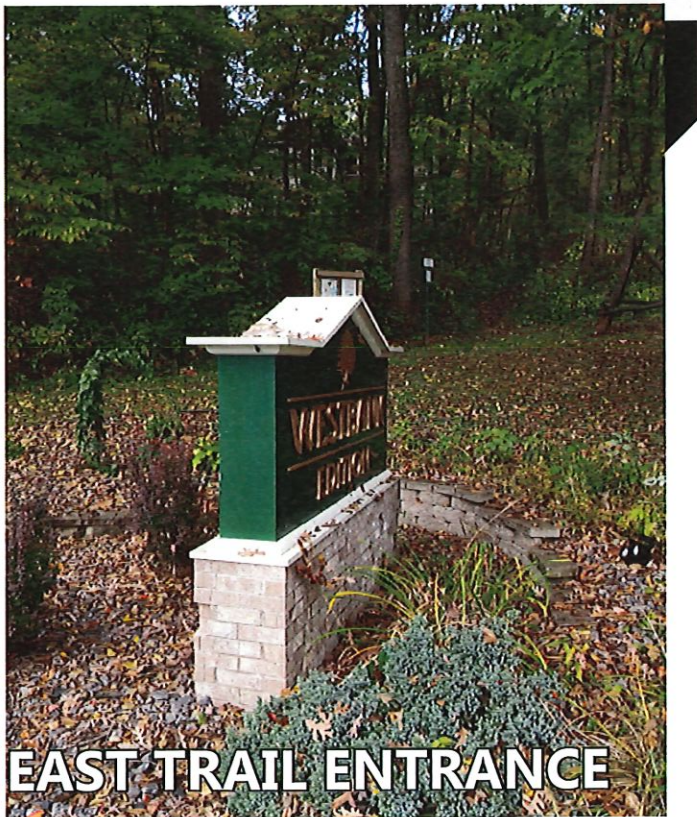
# Eagles Bluff Park

Park Address: 422 Red Apple Drive

Park Size: 107.1 Acres

## EXISTING FACILITIES

TYPE
Walking Trail



**EAST TRAIL ENTRANCE**



**TRAIL SIGNAGE**

# RECOMMENDATIONS

IMPROVEMENT	PRIORITY (LOW-MED-HIGH)	COST ESTIMATE
	TBD-AFTER	
	CITY INPUT	

\* = recommendation carried forward from the city's 2012 Park & Recreation Plan







Old Hickory Park

N 14TH ST

2P

Establish Prairie

EAGLES BLUFF PARK

Maple Woodland

Buckthorn

Goat Prairie

Eastern Red Cedar

Oriental B

REGENT DR

RED APPLE DR

EAGLES BLUFF RD

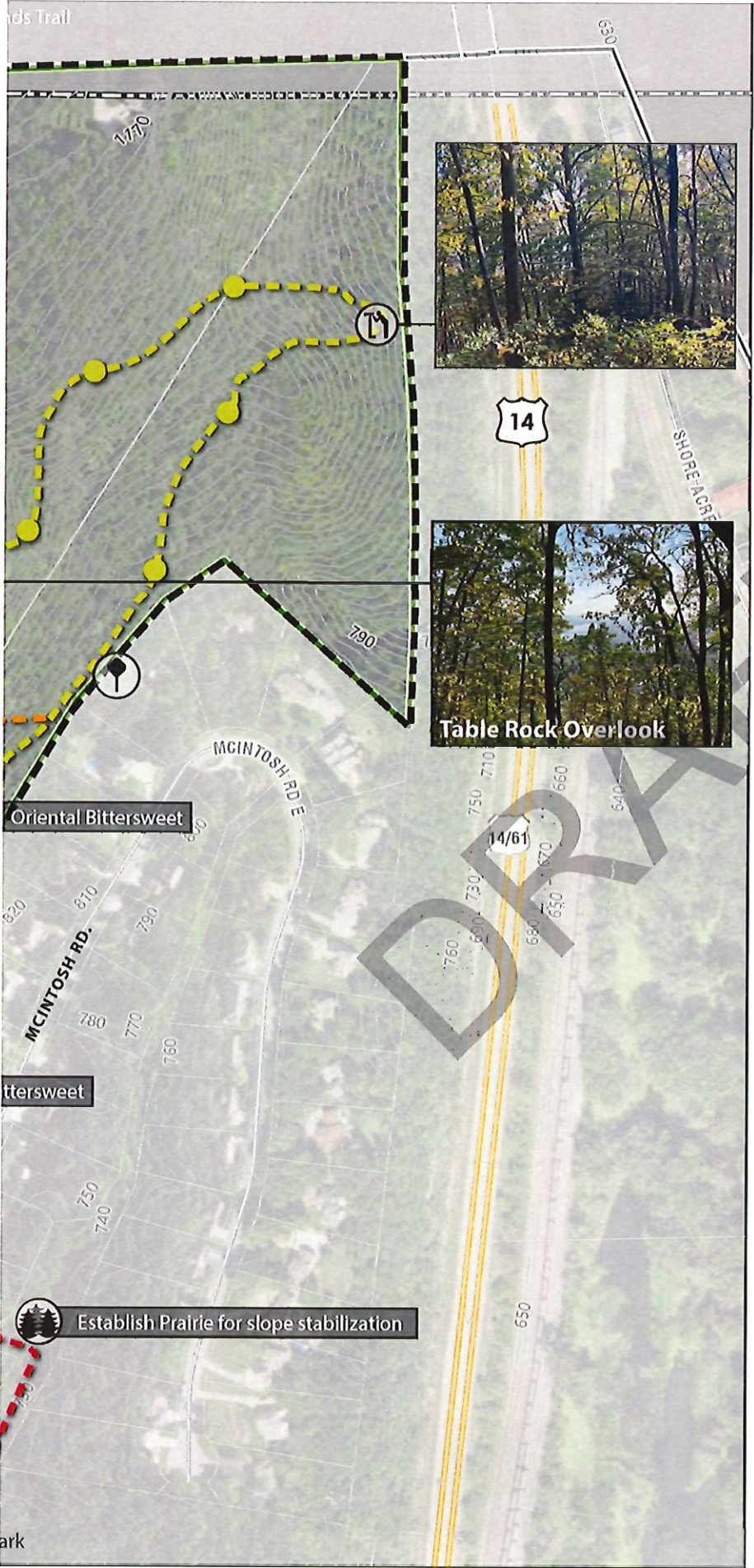
Goat Prairie Overlook

To Veterans P

WINONA COUNTY

To Future Bluff





# Eagles Bluff

Note: All trail locations are approximate

- McIntosh Trail  
Improve trail to maintain minimum 32" width. Consider steps or handrails where slope exceeds 4:1 horizontal to vertical ratio.
- Eagle's Bluff Loop Trail
- Red Apple Trail
- Red Apple Rocks Trail  
Improve trail to maintain minimum 32" width. Consider adding switch backs, steps or handrails where slope exceeds 4:1 horizontal to vertical ratio.
- Boy Scout Trail
- Unnamed Trail
- Trail Marker

- Entrance/Gateway
- Trail Wayfinding Signage
- Property Boundary Signage
- Overlook  
Improve signage and documentation of viewshed.
- Picnic Area
- Significant Vegetation
- Invasive Species Management
- Parking
  - 1- Possible Off-Street Parking at Pump Station Parcel. (4-6 stalls)
  - 2- On-Street Parking at Old Hickory (4-5 stalls)

**DRAFT**

Pyra Source  
Cook County (2021)  
Comp Plan Data (2015)  
MNDNR (2021)

REV 02.01.2022



0 100 200 Feet







# Horsetrack Meadows

Park Address: Bridle Ln  
Park Size: 51.8 Acres

## EXISTING FACILITIES

TYPE
Walking trail



TRAIL SIGNAGE



TRAIL



# RECOMMENDATIONS

IMPROVEMENT	PRIORITY (LOW-MED-HIGH)	COST ESTIMATE
	TBD-AFTER	
	CITY INPUT	

\* = recommendation carried forward from the city's 2012 Park & Recreation Plan











# Horsetrack

- - - - - Unnamed Trail  
*(location is approximate)*
- - - - - ADDED Trail  
*(approximate location)*
- ⬮ Entrance/Gateway
- 📍 Park Signage
- 🍷 Picnic Area
- 🌲 Significant Vegetation
- 🐟 Fishing Area  
*clear path to creek from trail, consider one location for improvements for ADA accessibility*
- P Parking

DRAFT

Data sources:  
 Horsetrack County (2021)  
 Camp Plan Data (2015)  
 MNDNR (2021)

REV 02.01.2022



0 100 200 Feet







# Vestch Park

Park Address: 722 N 2nd Street  
Park Size: 25 Acres

## EXISTING FACILITIES

TYPE
Walking Trail
Gazebo

## RECOMMENDATIONS

IMPROVEMENT	PRIORITY (LOW-MED-HIGH)	COST ESTIMATE

\* = recommendation carried forward from the city's 2012 Park & Recreation Plan





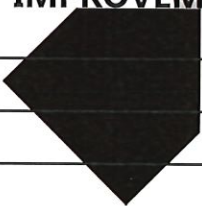
# Vollenweider Park

Park Address: Crescent Hills Drive  
Park Size: 11 Acres

## EXISTING FACILITIES

TYPE
Walking Trail

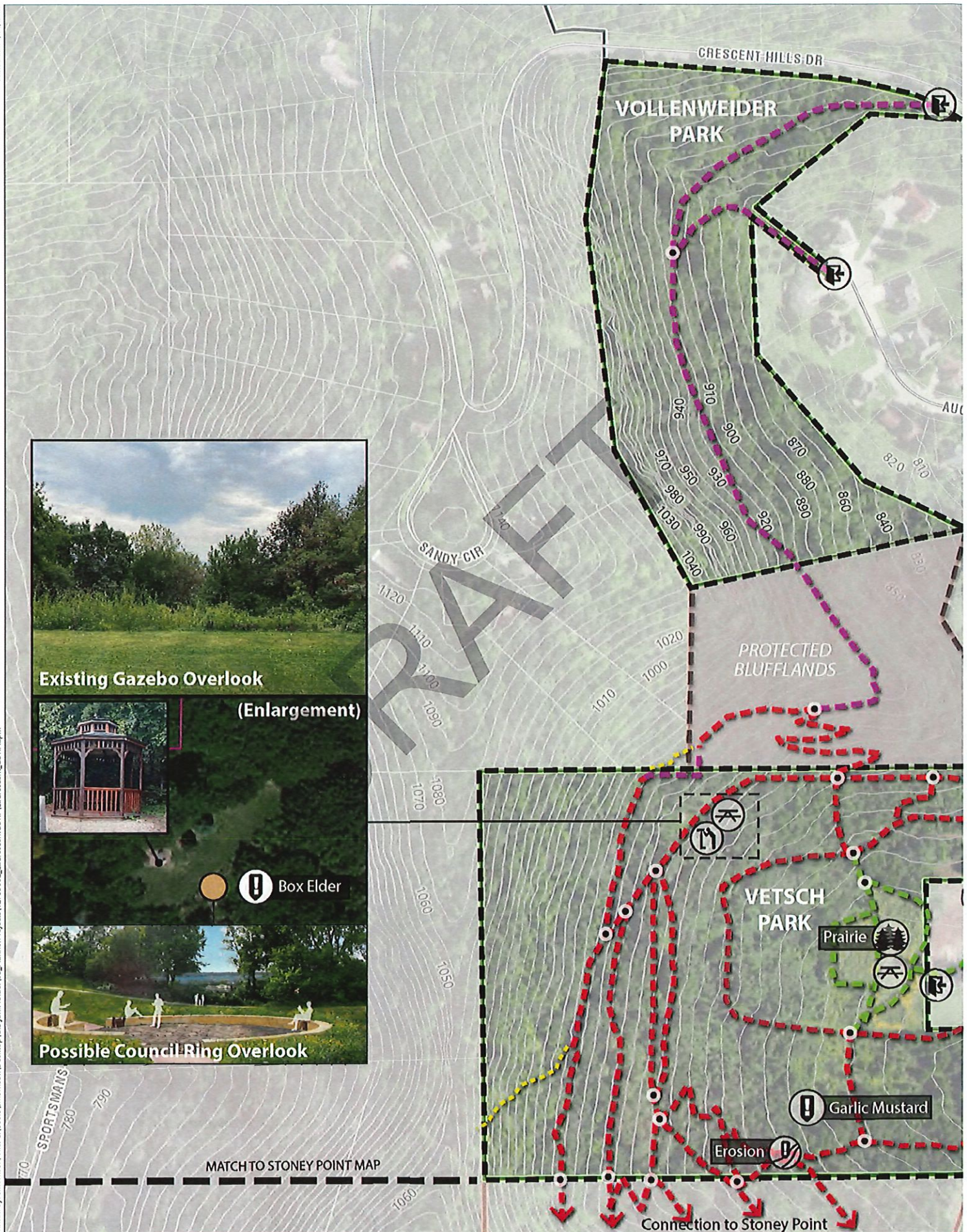
## RECOMMENDATIONS

IMPROVEMENT	PRIORITY (LOW-MED-HIGH)	COST ESTIMATE
		

TBD-AFTER  
CITY INPUT

\* = recommendation carried forward from the city's 2012 Park & Recreation Plan







# Vetsch & Vollenweider Park

*Note: All trail locations are approximate*

## --- Unnamed Trail

Add trail markers every 500 feet or as trail conditions require.

## --- Accessible Trail

Improve trail to allow for ADA compliance to maximum extent practicable. Slopes less than 5%. Firm, stable and slip resistant surface (concrete or asphalt preferred). Develop route from accessible parking stall.

## --- ADDED Trail (approximate location)

## --- REMOVED Trail (approximate location)



Park Signage



Entrance/Gateway



Trail Signage



Overlook



Picnic Area



Significant Vegetation



Invasive Species Management



Trail Maintenance



Solar Array Expansion Opportunity



Parking

**DRAFT**  
Data Sources:  
Holt County (2021)  
Comp Plan Data (2015)  
MNDNR (2021)

REV 02.01.2022



0 100 200 Feet

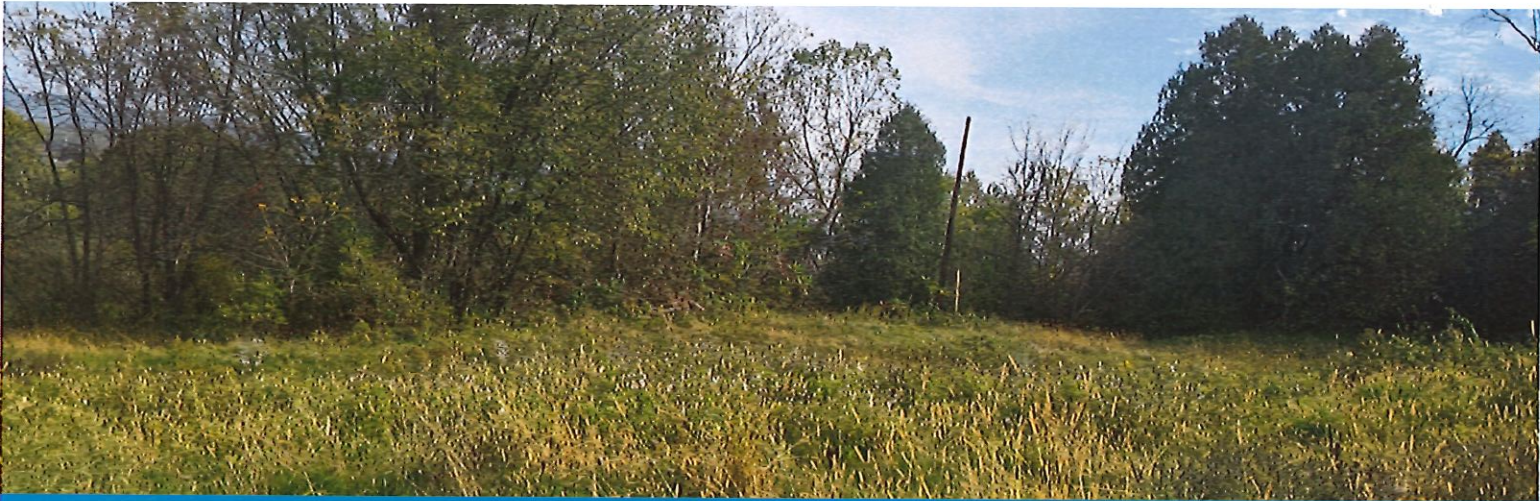




# Protected Bluffland

(not city park)





# Stoney Point

Park Address: Stoney Point Rd.  
Park Size: 59.6 Acres

## EXISTING FACILITIES

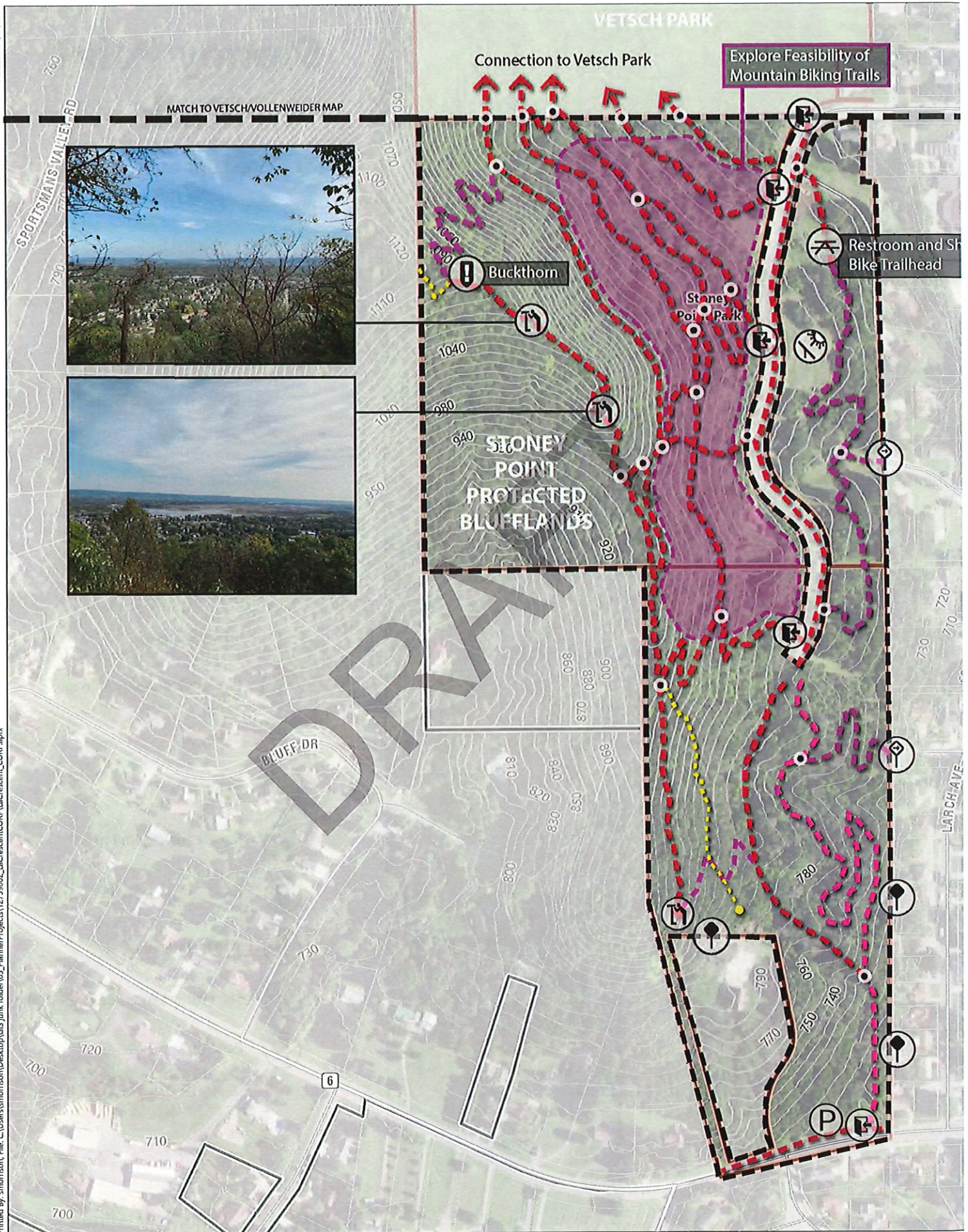
TYPE
Bike/Walking Trails

## RECOMMENDATIONS

IMPROVEMENT	PRIORITY (LOW-MED-HIGH)	COST ESTIMATE
	TBD-AFTER	
	CITY INPUT	

\* = recommendation carried forward from the city's 2012 Park & Recreation Plan







# Stoney Point Park

## La Crescent CORP Study

*Note: All trail locations are approximate*

### --- Unnamed Trail

Add trail markers every 500 feet or as trail conditions require.

### --- Accessible Trail

Improve trail to allow for ADA compliance to maximum extent practicable. Slopes less than 5%. Firm, stable and slip resistant surface (concrete or asphalt preferred). Develop route from accessible parking stall.

### --- ADDED Trail (approximate location)

### --- REMOVED Trail (approximate location)



Park Signage



Entrance/Gateway



Trail Signage



Property Boundary Signage



Overlook



Picnic Area



Significant Vegetation



Invasive Species Management



Trail Maintenance



Solar Array Expansion Opportunity



Parking

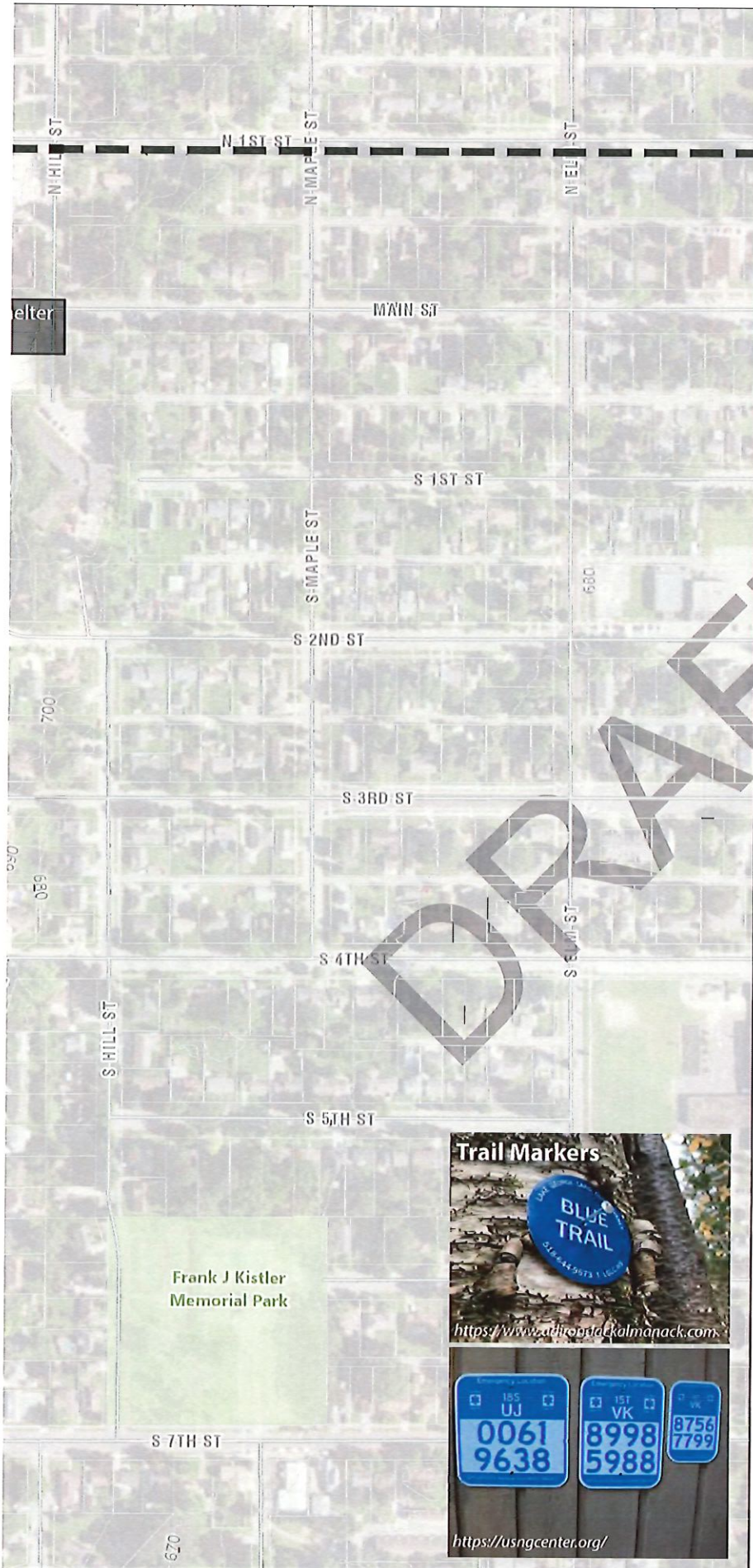
Data Sources:  
Houston County (2021)  
Comp Plan Data (2015)  
MWDN (2021)

**DRAFT**

REV 02.01.2022



0 100 200 Feet





# RECOMMENDATIONS

## 5.2 NEW AND EXPANDED PARK FACILITIES

### New Park Facilities

The City should develop new parks in areas that are underserved by existing facilities and areas where future residential expansion is anticipated to occur. There should be a focus on the acquisition of park and open space which will advance the goals and policies of this plan and the La Crescent Comprehensive Plan.

The New Parks & Trails Recommendations Map in Appendix C (Figure 5.1) identifies the location for potential new facilities based in part on La Crescent's future land use plan (see Section 2.x) areas potentially underserved by parks (Figure 5.2), and public engagement processes that identified general community priority and need.

- A. Site A is a city-owned property that houses a brush drop off site and open storage for a private tress manufacturer. The truss manufacturer has use of the property on a lease basis. In the future, this area has the potential to be converted to a park. A park in this location could include camp sites and serve as a trail head for the Root River, Wagon Wheel Trail, and Mississippi River Trail. The City could consider development of snowshoe and fat tire or cross country ski trails for winter use.
- B. Site B is a potential neighborhood park as the City expands west. The park should be between three and ten acres and include a multi-sport court, restroom/shelter/storage, lighted softball fields, playground equipment, and parking.
- C. Site C is a potential special use park as the City expands west. The park should be at least two acres in size and could include a dog park and trails that eventually connects to the walking trail at Horsetrack Meadows.

## 5.3 TRAIL IMPROVEMENTS

The City should develop a local system of trails that link to regional trails (Mississippi River Trail, Root River Trail, and the Wagon Wheel Trail)

and trail systems in adjacent communities. The proposed trails map show recommended bike/ped improvements including recommendations from the Blufflands Plan that was completed in 2016. A map of the proposed routes and trail improvements can be found in Appendix C (Figure 5.1). Descriptions of the trail recommendations are shown in the table on the following page.

## 5.5 OTHER RECOMMENDATIONS

### General Parks

- Complete ADA audit of all City parks.
- \*Add a small entry plaza at the northwest corner of the intersection of HWY 61 and 3rd St. South.
- If a bike course is developed at Stoney Point, the City and partners could host a work day or fundraising events for the course. These events can help maintain the trails and also raise awareness of the opportunities available to the community.
- Consider posting signage or a QR code the park users can scan to determine whether or not a park shelter is reserved at any given time.
- Identify a park to install inclusive playground equipment.
- When updating amenities at parks, consider recreation amenities for a variety of age groups.
- Ensure adequate benches are available at parks with playgrounds for caregivers to watch children.

### General Trails

- Implement Blufflands Trail loop through city as shown in 2017 Blufflands Plan.
- \*Create a more connected trail system. There are currently three key regional and national segments currently under various stages of planning and development (Wagon Wheel Trail, Mississippi River Trail, and the Root River Trail).
- Add wayfinding signage along the city's trails to better direct people to the City's downtown and parks.
- Expand ADA accessibility of all trails within the City with a goal of providing at least one fully ADA accessible route through each park.
- Consider using trail markers along all hiking trails that are more friendly to those who have a color vision deficiency (see example on the right). These markers use both text and color.



Route	Description
<b>Trail Connections</b>	
a	Add sidewalk to west connecting Veterans Park to Park Street (connect to 4th into overall sidewalk system).
b	Continue Phases 2 and 3 of Wagon Wheel Trail. Phase 2 connects from Shore Acres Road to the West Channel Bridge. Phase 3 will provide a grade separated connection from the north side of Highway 61 to the south side.
c	Connect Wagon Wheel Trail on Main Street to new bike/ped bridge crossing HWY 61 at S. 1st St.
d	Support off-road trail extension of Mississippi River Trail from Wagon Wheel Trail to the north.
e	Support extension of the Mississippi River trail from the Wagon Wheel Trail to the south (Miller's Corner, HWY 16/26 intersection).
f	Add off-road trail along frontage road (N. Chestnut St.) that connects from Veterans Park to new bike/ped bridge across HWY 61/14. Extend N. Chestnut St. across N. 4th St. where there is currently a gap in the road.
g	Add off-road trail connecting new Horsetrack Meadows development to trails at Stoney Point.
h	Implement segments of the blufflands trail from the 2016 Blufflands Trail Plan.
i	Bike/pedestrian crosswalk enhancements needed to improve safety at the intersection of Hwys 6 and 25 - consider rapid flash beacon.
j	Add bike lane along Main St.
k	Add off-road trail between future phase of the Wagon Wheel Trail and HWY 16.
l	Extend sidewalk from N. Elm St. to Old Hickory Park.
m	Add sidewalk or off-road trail between Kistler Dr. and S. 3rd St.
n	Bike/pedestrian crosswalk enhancements needed to improve safety at the intersection of HWY 25 and Skunk Hollow Rd - consider rapid flash beacon.
o	Pedestrian crosswalk enhancements needed to improve safety at the intersection of N. Elm St. and Jonathan Ln. - consider rapid flash beacon.

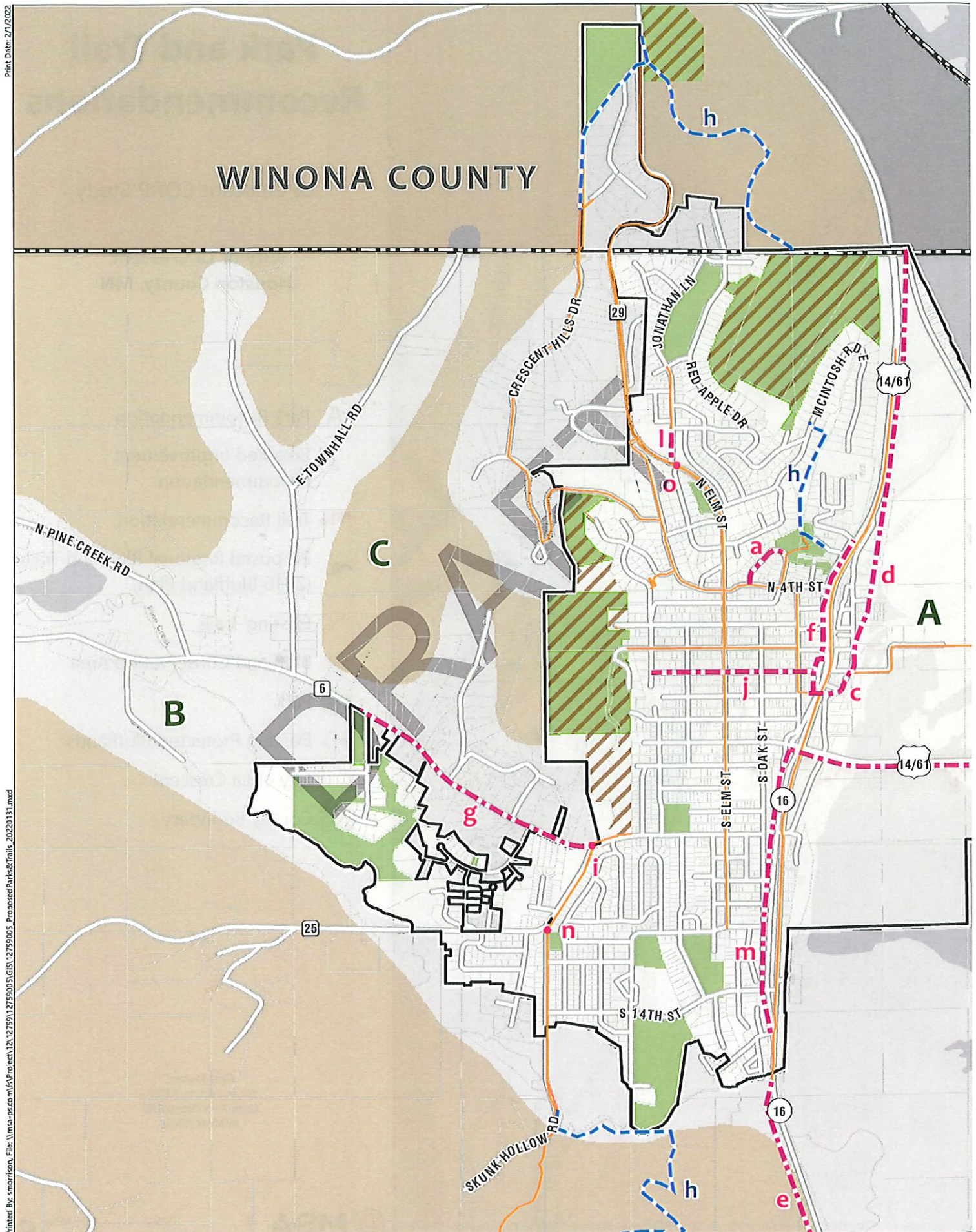


Example Trail Markers



Figure 5.1: New Park and Trail Recommendations

Source: MSA

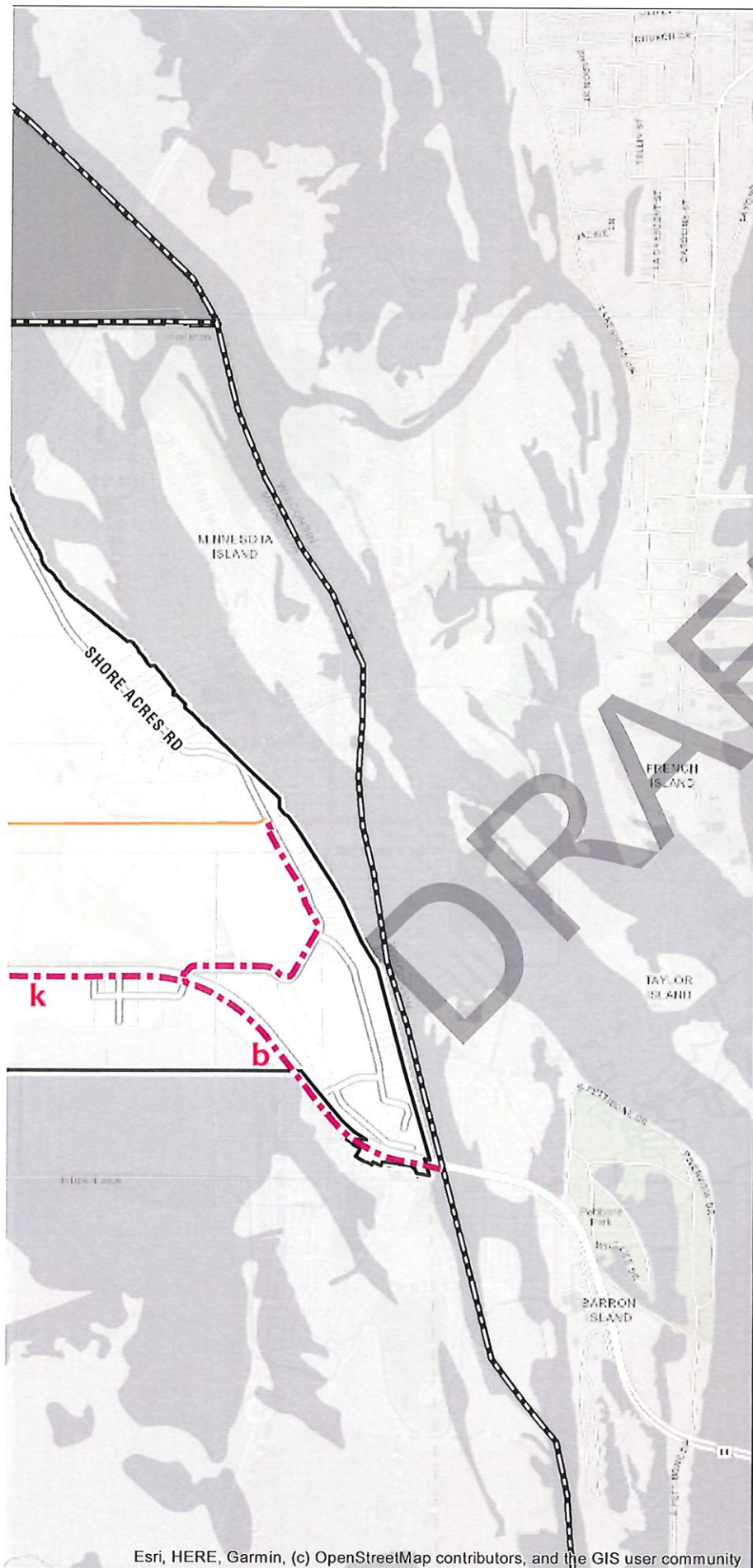




# Park and Trail Recommendations

La Crescent CORP Study

**City of La Crescent  
Houston County, MN**



- A** Park Recommendation
- a** Bike/Ped Improvement Recommendation
- a** Trail Recommendation
- a** Proposed Regional Bluffland Trail (2016 Bluffland Plan)
- Existing Trails
- Bluffland Conservation Area
- Park
- Existing Protected Blufflands\*
- City of La Crescent
- County Boundary

*Data Sources:  
Houston County (2021)  
Comp Plan Data (2015)  
MNDNR (2021)*

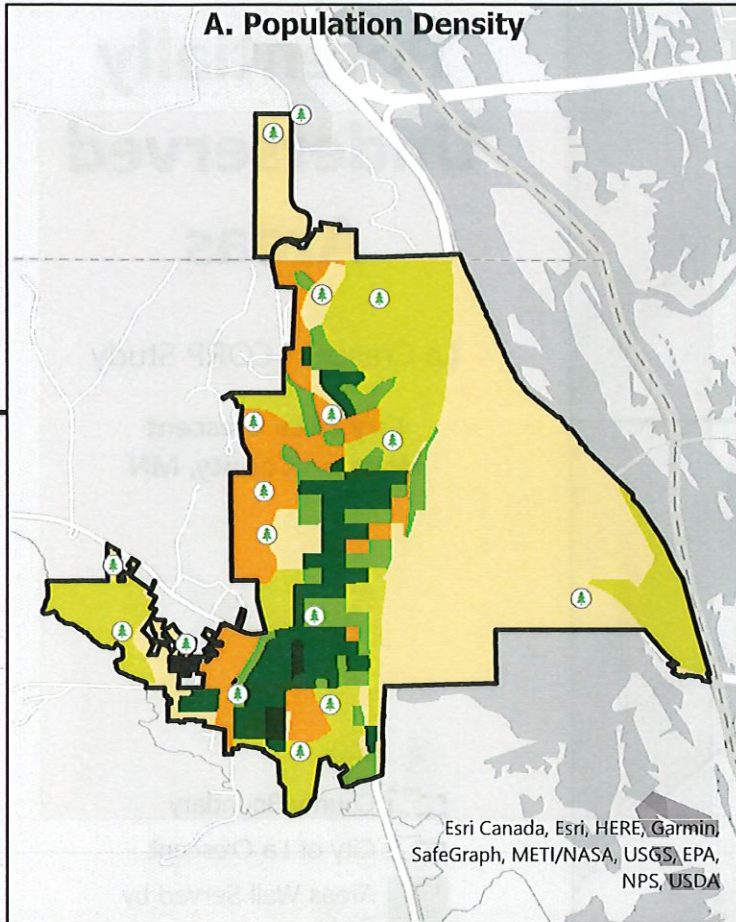


Figure 5.2: Potentially Underserved Park Areas

Source: MSA

Print Date: 11/17/2021

### A. Population Density



### Potentially Underserved Areas

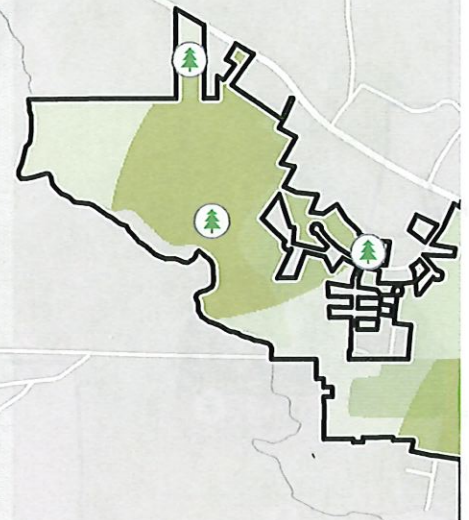
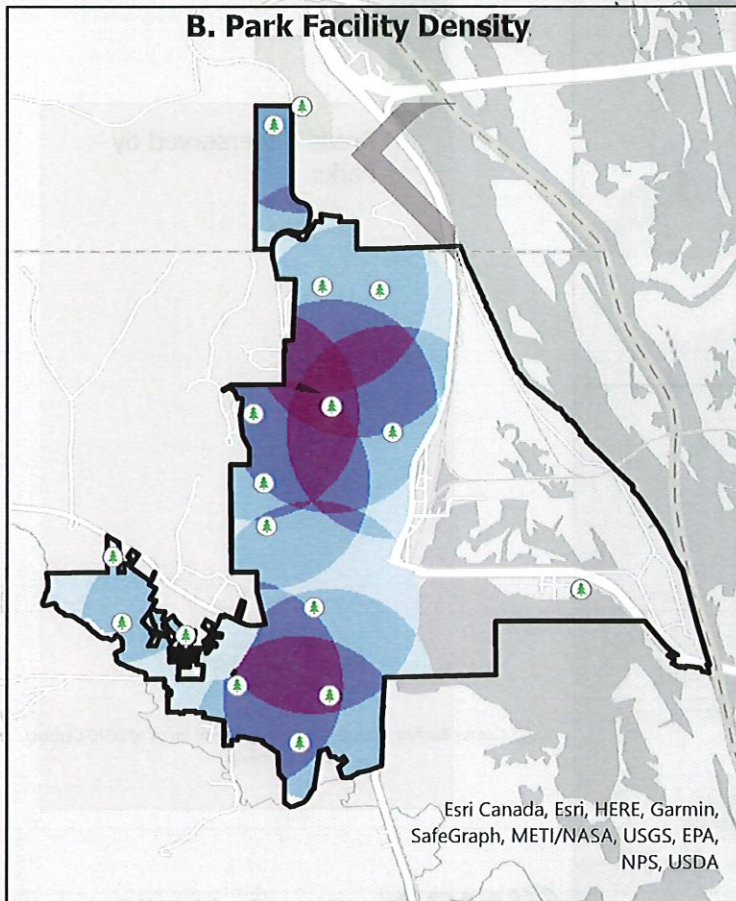
This map is an overlay of maps A and B. It represents areas that are potentially underserved. Darker areas are areas that are highly populated by do not have nearby park facilities.

### What is the purpose of this map?

1. To determine if areas of La Crescent are underserved by City parks. Areas that are most underserved are shown by the darkest colors on the map. It may be beneficial for the City to take these areas into consideration when planning future parks.

2. Some parks may be subject to heavy use based on surrounding population density. These parks may require additional maintenance and repair.

### B. Park Facility Density



Esri Canada, Esri, H



# Potentially Underserved Areas

La Crescent CORP Study

**City of La Crescent  
Houston County, MN**



Park



County Boundary



City of La Crescent



Areas Well Served by  
Parks

Areas Underserved by  
Parks

*Data Sources:*

*Houston County (2021)*

*Comp Plan Data (2015)*

*MNDNR (2021)*

*US Census Bureau (Population Density per sq mi as of 2010 Census)  
ESRI Basemap*

ERE, Garmin, SafeGraph, INCREMENT P, METI/NASA, USGS, EPA, NPS, US Census Bureau, USDA



0 500 1,000 Feet





# RECOMMENDATIONS

- Consider posting numbered markers along hiking trails that correspond to exact longitude/latitude coordinates to facilitate emergency rescues when needed.

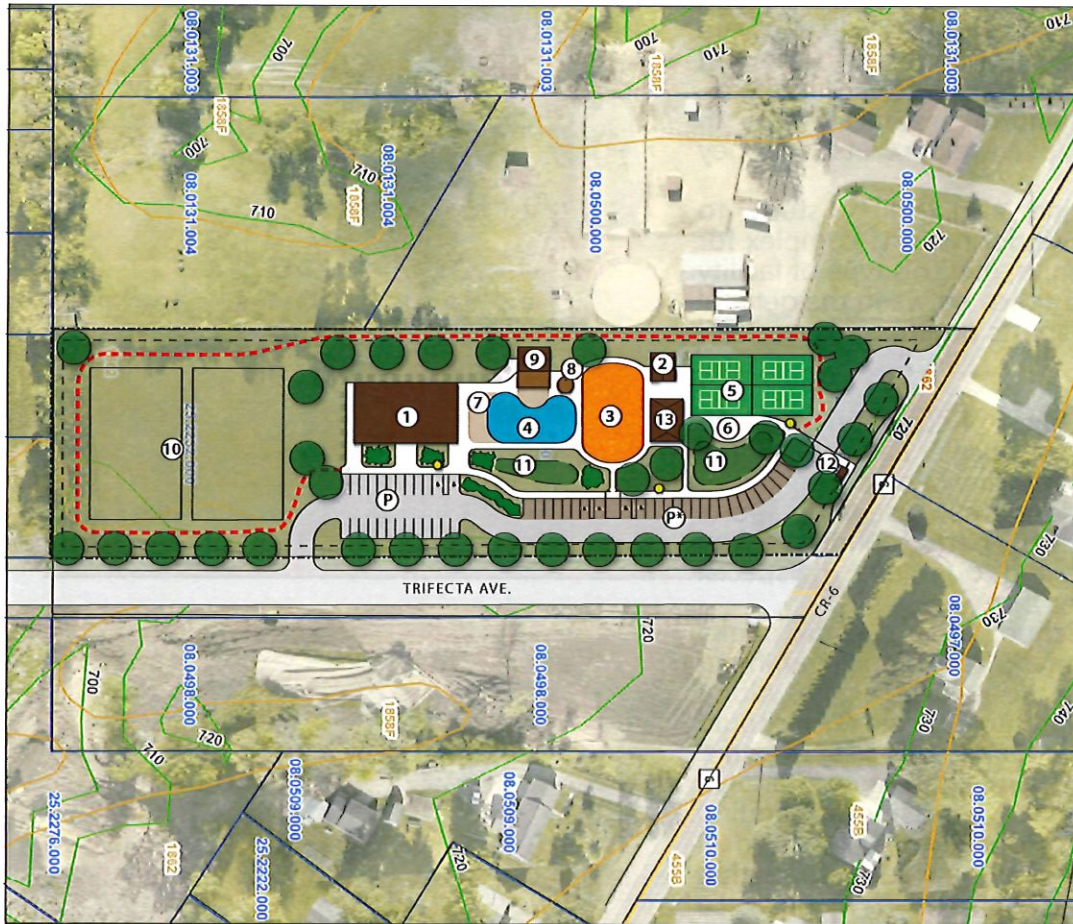
## Administrative

- Consider updating §90.13 of the City's ordinances to allow dogs in additional parks. Currently dogs are only allowed in Vetsch, Eagles Bluff, and Vollenweider.
- Create an ArcGIS Storymap for the City's parks and trail system to increase outreach and information available to users. Storymaps are accessible from mobile phones with internet capability and could be used to facilitate self-guided naturalist and/or historical hikes in Eagles Bluff or Vollenweider/Vetsch/Stoney Point Parks.
- Consider conducting a feasibility study to explore offering an indoor sports complex for soccer, baseball, tennis, etc. This type of facility should be a shared space between the general public and private sports organizations.

## Partnerships

- Partner with Outdoor Recreation Alliance (ORA) for trail maintenance at Eagles Bluff and Vollenweider/Vetsch/Stoney Point.
- Remind organizations that use city sports fields to leave them in better condition than they were found in and to remove any special movable equipment that was used.
- Partner with the School District's Community Education program to build programming that targets retirees (e.g. hiking club). Along with desirable programming, the City should prioritize expanding ADA accessibility of parks.
- Consider discussing with the Minnesota DNR the potential to make Sportsmen's Landing a trailhead for the Root River/Wagon Wheel Trails. This location could include information about the trail system and a map of La Crescent or QR code visitors could scan to open an interactive map of the City that shows additional parks, trails, food, and retail options within the city.





## WIESER PARK CONCEPTUAL MASTER PLAN

### OPTION A

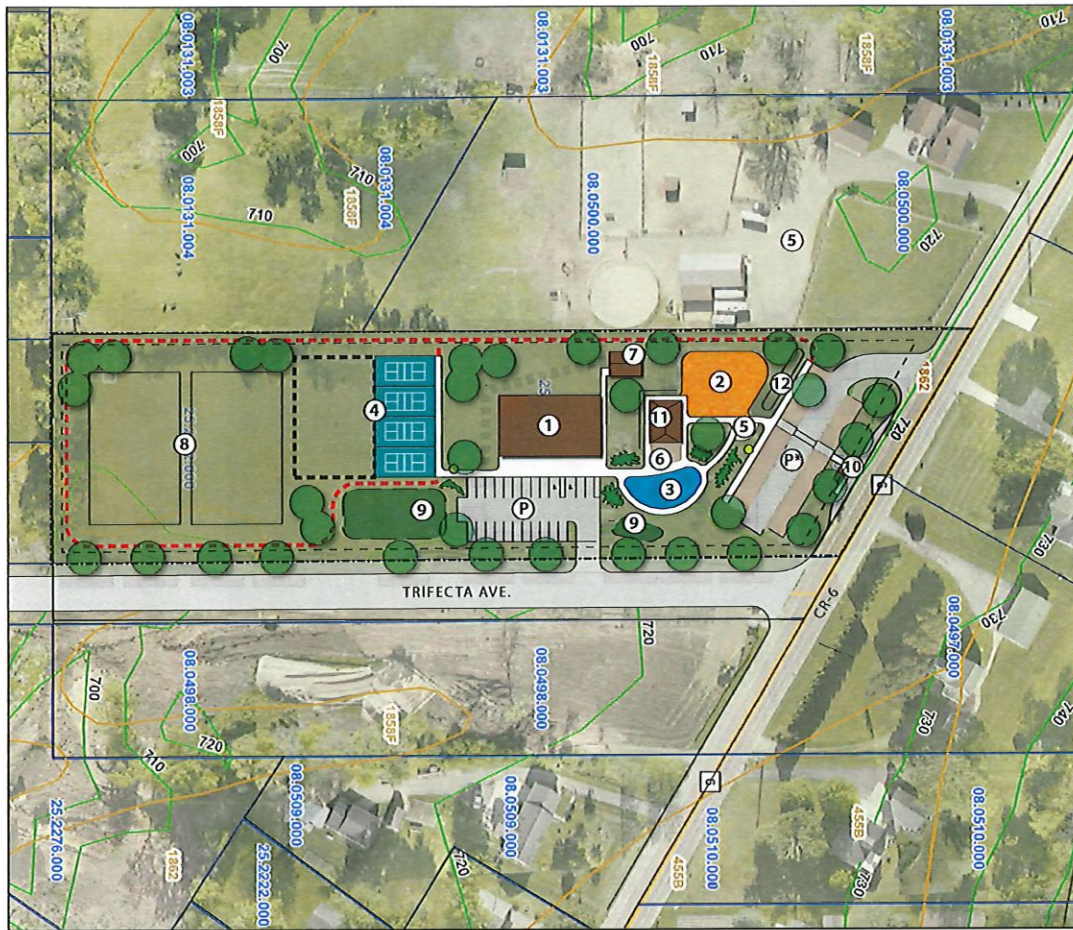
- ① Shelter/Restrooms  
(possible solar panels)
- ② Restroom
- ③ Playground
- ④ Splash Pad
- ⑤ Pickleball Courts (4)
- ⑥ Monument
- ⑦ Plaza/Seating Area
- ⑧ Shade(s)
- ⑨ Storage/Equipment Building and Pergola
- ⑩ Multi-Use Open Space
- ⑪ Stormwater/Rain Garden
- ⑫ Transit Stop
- ⑬ Existing Open Shelter
- Landscaping
- Trees
- Walking Trail
- Bike Racks
- Parking
- Parking - Possible Permeable Pavement

**DRAFT**  
February 1, 2021

0 40' 80'







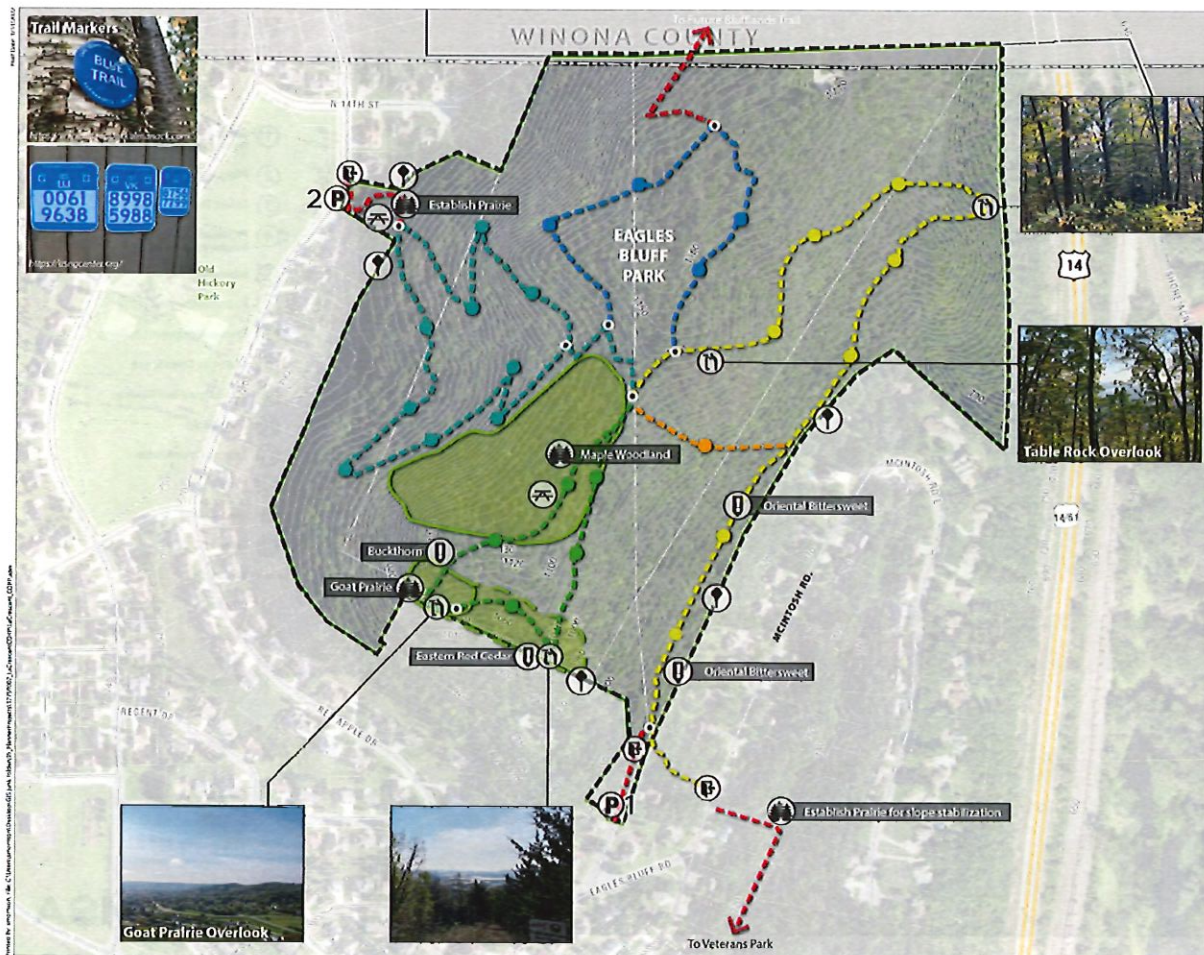
## WIESER PARK CONCEPTUAL MASTER PLAN

### OPTION B

- ① Shelter/Restrooms  
(possible solar panels)
- ② Playground
- ③ Splash Pad
- ④ Pickleball Courts (4)  
(possible expansion South)
- ⑤ Monument
- ⑥ Plaza/Seating Area
- ⑦ Storage/Equipment Building
- ⑧ Multi-Use Open Space
- ⑨ Stormwater/Rain Garden
- ⑩ Transit Stop
- ⑪ Existing Open Shelter
- ⑫ Berm
- Landscaping
- Trees
- Walking Trail
- Bike Racks
- P Parking
- P Parking - Possible Permeable Pavement

**DRAFT**  
February 1, 2021





## Eagles Bluff

Note: All trail locations are approximate

- McIntosh Trail  
Improve trail to maintain minimum 32" width. Consider steps or handrails where slope exceeds 4:1 horizontal to vertical ratio.
- Eagle's Bluff Loop Trail
- Red Apple Trail
- Red Apple Rocks Trail  
Improve trail to maintain minimum 32" width. Consider adding switch backs, steps or handrails where slope exceeds 4:1 horizontal to vertical ratio.
- Boy Scout Trail
- Unnamed Trail
- Trail Marker

Ⓜ Entrance/Gateway

\* Trail Wayfinding Signage

Ⓜ Property Boundary Signage

Ⓜ Overlook  
Improve signage and documentation of viewshed.

Ⓜ Picnic Area

Ⓜ Significant Vegetation

Ⓜ Invasive Species Management

Ⓜ Parking  
1-Possible Off-Street Parking at Pump Station Parcel (4-6 stalls)  
2-On-Street Parking at Old Hickory (4-5 stalls)

**DRAFT**  
This is a draft document and should not be used for construction or other purposes without the approval of the project manager.

REV 02.01.2022

MSA

0 100 200 Feet









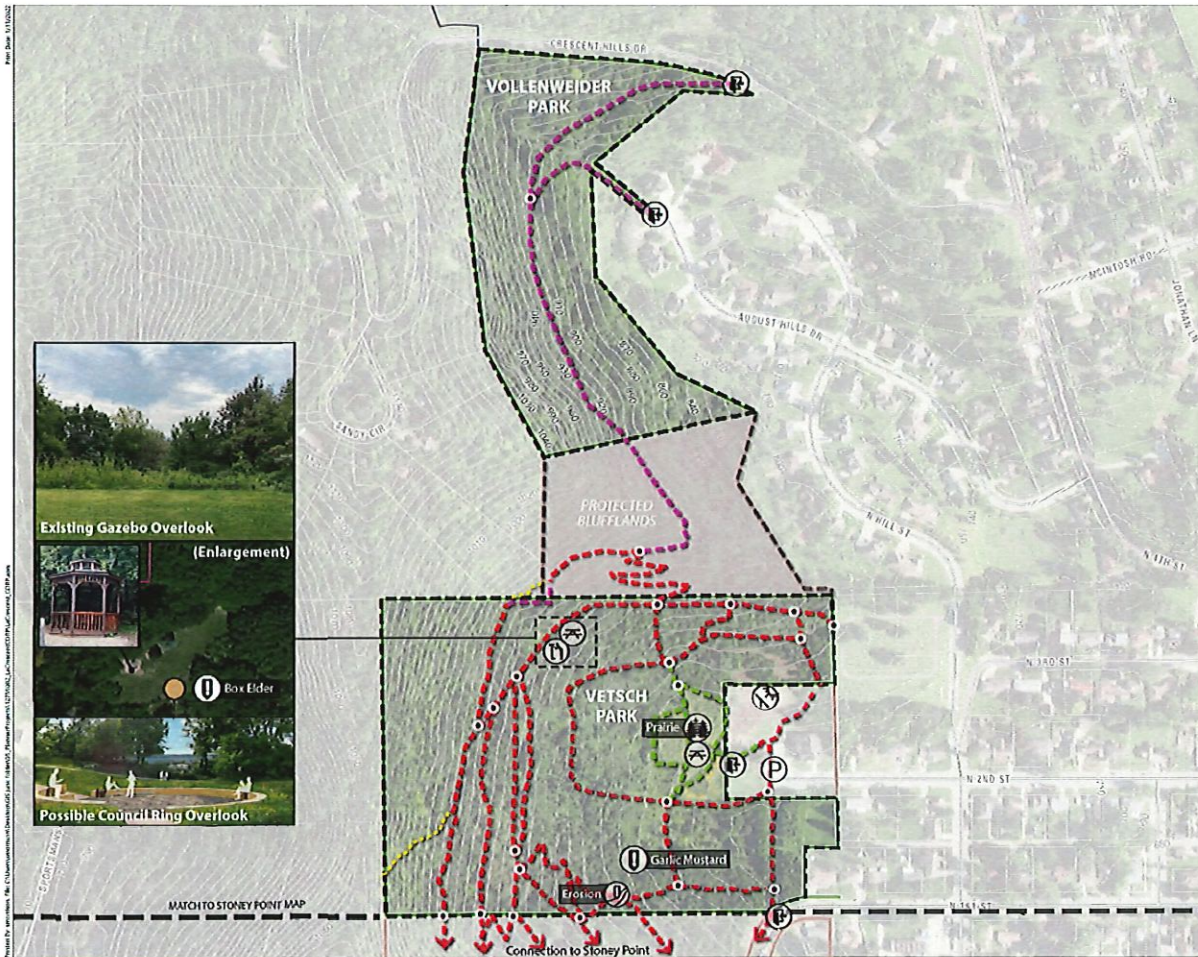


# Stoney Point Park

## La Crescent CORP Study

- Note: All trail locations are approximate*
- Unnamed Trail**  
Add trail markers every 500 feet or as trail conditions require.
  - Accessible Trail**  
Improve trail to allow for ADA compliance to maximum extent practicable. Slopes less than 5%. Firm, stable and slip resistant surface (concrete or asphalt preferred). Develop route from accessible parking stall.
  - ADDED Trail**  
(approximate location)
  - REMOVED Trail**  
(approximate location)
  - Park Signage**
  - Entrance/Gateway**
  - Trail Signage**
  - Property Boundary Signage**
  - Overlook**
  - Picnic Area**
  - Significant Vegetation**
  - Invasive Species Management**
  - Trail Maintenance**
  - Solar Array Expansion Opportunity**
  - Parking**





## Vetsch & Vollenweider Park

Note: All trail locations are approximate

- **Unnamed Trail**  
Add trail markers every 500 feet or as trail conditions require.
- **Accessible Trail**  
Improve trail to allow for ADA compliance to maximum extent practicable. Slopes less than 5%. Firm, stable and slip resistant surface (concrete or asphalt preferred). Develop route from accessible parking stall.
- **ADDED Trail**  
(approximate location)
- **REMOVED Trail**  
(approximate location)
- Park Signage**
- Entrance/Gateway**
- Trail Signage**
- Overlook**
- Picnic Area**
- Significant Vegetation**
- Invasive Species Management**
- Trail Maintenance**
- Solar Array Expansion Opportunity**
- Parking**

**DRAFT**  
REVISED 2023  
REVISED 2023  
REVISED 2023

REV 02.01.2022

**MSA**

0 100 200 Feet





