

TO: Park & Recreation Commission Members
FROM: Bill Waller, City Administrator
Chris Fortsch, Administrative Clerk
Jon Steffes, Summer Recreation Director
DATE: March 18, 2022
RE: Meeting Notice
Tuesday, March 29, 2022
5:30 p.m., La Crescent City Hall
315 Main Street

AGENDA

1. Introductions, including how long you have been on the Park & Recreation Commission, what you do for employment, a memorable moment from serving on the Park & Recreation Commission, and anything else that you would care to share.
2. Consideration of meeting minutes – February 8, 2022.
3. Review duties and objectives, and decision-making authority, of the Park & Recreation Commission. Information from the City Code is included.
4. Discussion regarding lights at the sand volleyball courts at Old Hickory Park. Information regarding this request is included.
5. Review revised project schedule for the update to the City's Comprehensive Park & Recreation Plan, including the addition of a Park & Recreation Commission meeting in April that will be an open-house format in order for the public to comment on the draft of the Plan.
6. Review preliminary recommendations, draft master plan, and priority ranking worksheets relating to the update to the City's Comprehensive Park & Recreation Plan. Representatives from MSA will be in attendance at the meeting via Zoom. Memo included.
7. Public comment period.
8. Additional discussion items.
9. Future meeting dates.
10. Adjournment.

Please call me at 895-2595, or e-mail me at bwaller@cityoflacrescent-mn.gov, if you will not be able to attend, have questions, or need more information.

Thank you.

2

TO: Honorable Mayor and City Council Members
Park and Recreation Commission Members
FROM: Bill Waller, City Administrator
DATE: February 10, 2022
RE: Meeting Minutes
February 8, 2022

The La Crescent Park and Recreation Commission met at 5:30 p.m., on Tuesday, February 8, 2022, in the City Council Chambers at the La Crescent City Hall. The following members were present: Jon Steffes, Paul McLellan, Sarah Wetterlin, Diana Adamski, Linda Gasper, Maseray Bangura, and Patti Martell. Also in attendance were Teresa O'Donnell-Ebner, Chris Fortsch and Bill Waller.

1. Brief introductions were held.
2. It was the consensus of the Commission to approve the minutes of the November 15, 2021 Park and Recreation Commission meeting as presented.
3. The Commission was informed that an updated packet was being provided at the meeting, as the final pages in the preliminary recommendations were not included in the materials that were distributed by e-mail in advance of the meeting. It was also discussed that given the volume of material for consideration, that a March meeting of the Park & Recreation be held, which would be an additional meeting that was not included in the original schedule for the project.
4. Becky Binz and Dan Schmitt from MSA were in attendance at the meeting via Zoom to review the preliminary recommendations, draft master plan, and priority worksheets relating to the update to the City's Comprehensive Park & Recreation Plan. The draft plan for Crescent Valley Park, John S. Harris Park, Valley South Park, Abnet Field, Frank J. Kistler Memorial Park, Old Hickory Park, Veteran's Park, and the North End Park were reviewed and discussion followed regarding items to add to and remove from each of the draft park plans. It was agreed that the preliminary master plans for Eagles Bluff, Vollenweider/Vetsch/Stoney Point, Horsetrack Meadows, and Wieser Park would be reviewed at the March Park & Recreation Commission meeting.
5. It was agreed that the next meeting of the Park & Recreation Commission would be Tuesday, March 29, 2022, at 5:30 pm., at City Hall.
6. The Commission was informed that the meeting with the local youth sports organizations went well, and that moving forward a similar meeting would be held each year.
7. The Commission was informed about a local business that is interested in sponsoring a fund-raising event for improvements to the ballfields at Abnet Field, and that a meeting has been scheduled with the business and La Crescent Youth Ball.

8. The Commission was provided an update on the donations that the City has received for a new park shelter at Wieser Park.
9. Information was provided to the Commission about the Lions Club Frozen Apple Hike that is planned for February 12, 2022.
10. There being nothing further to discuss, the meeting was adjourned at approximately 7:08 pm.

§ 31.02 ELIGIBILITY FOR MEMBERSHIP AND APPOINTMENTS.

City Council members or other persons are eligible for appointment to the commissions. Commission appointments, for purposes of transition from previous commission appointment policy, shall be made anew with respect to all commission positions in 1990. One-half of the commission members of a given commission shall be appointed for a period of one year along with the extra commission member of commissions having an odd number of members; the remaining commission positions of a given commission shall be appointed for three-year terms, except in the case of Planning Commission appointments. All subsequent commission appointments in the years following transition year 1990 shall be as to expired commission positions and for two-year terms. Interim appointment to fill vacancies shall be for the balance of the unexpired vacant commission position. Commission members, except Council member appointees, need not be city residents. All members of commissions, their specific term durations notwithstanding, serve at the pleasure of the City Council and may be discharged or removed with or without cause.

(Prior Code, § 2.15(3)) (Ord. 270, passed 2-5-90)

§ 31.03 REIMBURSEMENT; EXPENSES REIMBURSED.

(A) Commission members shall receive such reimbursement for expenses incurred as a result of commission duties with prior approval thereof as the Council may by resolution determine. Subject to approval and review by the City Council, commission members shall be reimbursed for:

(1) Fees incidental to attendance at out-of-town meetings and seminars.

(2) Ordinary and necessary expenses incurred while attending and in connection with out-of-town seminars and meetings.

(3) Necessary special equipment and supplies with prior City Council approval.

(B) A city vehicle may be available for necessary out-of-town travel subject to and consistent with established ongoing city policy for the use thereof.

(Prior Code, § 2.15(4)) (Ord. 270, passed 2-5-90)

§ 31.04 EX-OFFICIO MEMBERS.

The Chief of Police, Building Official, City Attorney, City Administrator and the Public Works Director are ex-officio members of all commissions, and the duration of their terms in such ex-officio capacities shall correspond with their respective tenures in their general capacities.

(Prior Code, § 2.15(5)) (Ord. 270, passed 2-5-90)

§ 31.05 REPORTING TO COUNCIL.

All commissions shall report to the City Council at least once a year or as otherwise requested by the Council. Routinely after each meeting whereat subject matter referred to a commission for study, consideration and recommendation, the commission shall make specific written findings of fact together with its recommendation based thereon and shall transmit such written fact findings and recommendation in writing to the City Administrator for consideration by the City Council at a subsequent meeting thereof.

(Prior Code, § 2.15(8)) (Ord. 270, passed 2-5-90)

§ 31.06 COMMISSION AGENDA.

The business transacted at all commission meetings shall follow a standard agenda form as prescribed by the City Council and available at the City Administrator's office. Minutes of all proceedings which are public information shall be kept by the designated commission secretary and shall be available at all reasonable times and frequencies as public information, and especially for review by the City Administrator, City Council, and where indicated, other city staff department heads.

(Prior Code, § 2.15(10)) (Ord. 270, passed 2-5-90)

SPECIFIC DEPARTMENTS, BOARDS AND COMMISSIONS**§ 31.20 DUTIES AND OBJECTIVES GENERALLY.**

The duties and objectives of the Public Works, Health, Parks and Recreation, Buildings and Grounds, Economic Development, Planning, Public Safety, Board of Appeals and Emergency Services are listed in this subchapter.

(Prior Code, § 2.16(1)) (Ord. 270, passed 2-5-90)

§ 31.21 PARKS AND RECREATION COMMISSION.

The duties and objectives of the Parks and Recreation Commission shall be to make studies and submit status reports and budget recommendations concerning youth and adult recreational programs; to plan for effective utilization of existing parks and playgrounds, including reviews to determine adequate equipment and to make projections for new facilities to meet the recreational needs of city residents.

(Prior Code, § 2.16(4)) (Ord. 270, passed 2-5-90)

4

From: Lisa Smith <Lisa.Smith2@selectrehab.com>
Sent: Monday, February 14, 2022 11:44 AM
To: Christina Fortsch <CFortsch@cityoflacscent-mn.gov>
Cc: Lisa Smith <Lisa.Smith2@selectrehab.com>
Subject: Volleyball court lights

Chris,

Good morning, I wanted to follow up and see what the next steps are for getting lights at the volleyball courts? Do we need to get it on the agenda for the next meeting? I have been in contact with one of the organizers for Rockin the Ridge and they are willing to use some of the money they raise for lights as well!

At the last meeting someone mentioned driving by timeout to see the kind of lights we are talking about. I am wondering if that ever happened? I would be willing to meet someone there and turn the lights on, so they can see them. They won't be on right now since there is no volleyball going on.

Thank you for your help with this!

Lisa Smith
Regional Manager
Select Rehab
608-780-5298
Fax: 502-619-6389
Lisa.Smith2@selectrehab.com

From: Lisa Smith <Lisa.Smith2@selectrehab.com>
Sent: Tuesday, March 8, 2022 9:50 AM
To: Christina Fortsch <cfortsch@cityoflacscent-mn.gov>
Subject: Fw: Volleyball court lights

Chris,

Good morning, I just wanted to follow up on this email. It sounds like there is another meeting in April. Can we make sure the volleyball courts lights is on the agenda? Also what is the day and time for the meeting and Todd and I will attend again. It would be nice if someone wanted to come and look at the lights at Timeout prior to that meeting. I am willing to meet anyone over there and show them.

I was also going to offer to stop by the city and get the nets and we can put them up as well.

Thank you for all your help! Have a great day!

Lisa Smith
Regional Manager
Select Rehab
608-780-5298
Fax: 502-619-6389
Lisa.Smith2@selectrehab.com



#6

MSA Memo

To: La Crescent Park & Recreation Commission
From: Becky Binz, AICP, Project Manager (bbinz@msa-ps.com)
Subject: March 29th – Park & Recreation Plan Update-Preliminary Recommendations
Date: March 17, 2022

MSA will be attending your March 29th meeting via Zoom to finish review of the master plans and other recommendations. At the meeting we intend to review the following items:

1. **Project Schedule.** *(no attachment in packet)*
2. **Review Draft Master Plans for Eagles Bluff, Vollenweider/Vetsch/Stoney Point, Horsetrack Meadows, and Wieser Park.** Draft master plans for these parks area included in your packets.
3. **Complete Review of Preliminary Recommendations (Chapter 5).** An updated draft of preliminary recommendations are included in your packet.
4. **Priority Ranking Worksheet.** This sheet lists recommendations for existing parks that are from the previous plan, the community survey, staff, local sports organizations, and the public open house. Please indicate whether you think each recommendation is a 1-3 year priority (1), a 3-5 year priority (2), or a long range priority (3).
5. **Second Public Open House.** We will have another public meeting (April) so that residents can provide feedback on the draft master plans and other recommendations.

Eagles Bluff

Note: All trail locations are approximate

- McIntosh Trail
- Improve trail to maintain minimum 32" width. Consider steps or handrails where slope exceeds 4:1 horizontal to vertical ratio.
- Eagles Bluff Loop Trail
- Red Apple Trail
- Red Apple Rocks Trail
- Improve trail to maintain minimum 32" width. Consider adding switch backs, steps or handrails where slope exceeds 4:1 horizontal to vertical ratio.
- Boy Scout Trail
- Unnamed Trail
- Trail Marker

- Entrance/Gateway
- Trail Wayfinding Signage
- Property Boundary Signage
- Overlook
- Improve signage and documentation of viewshed.
- Picnic Area
- Significant Vegetation
- Invasive Species Management
- Parking

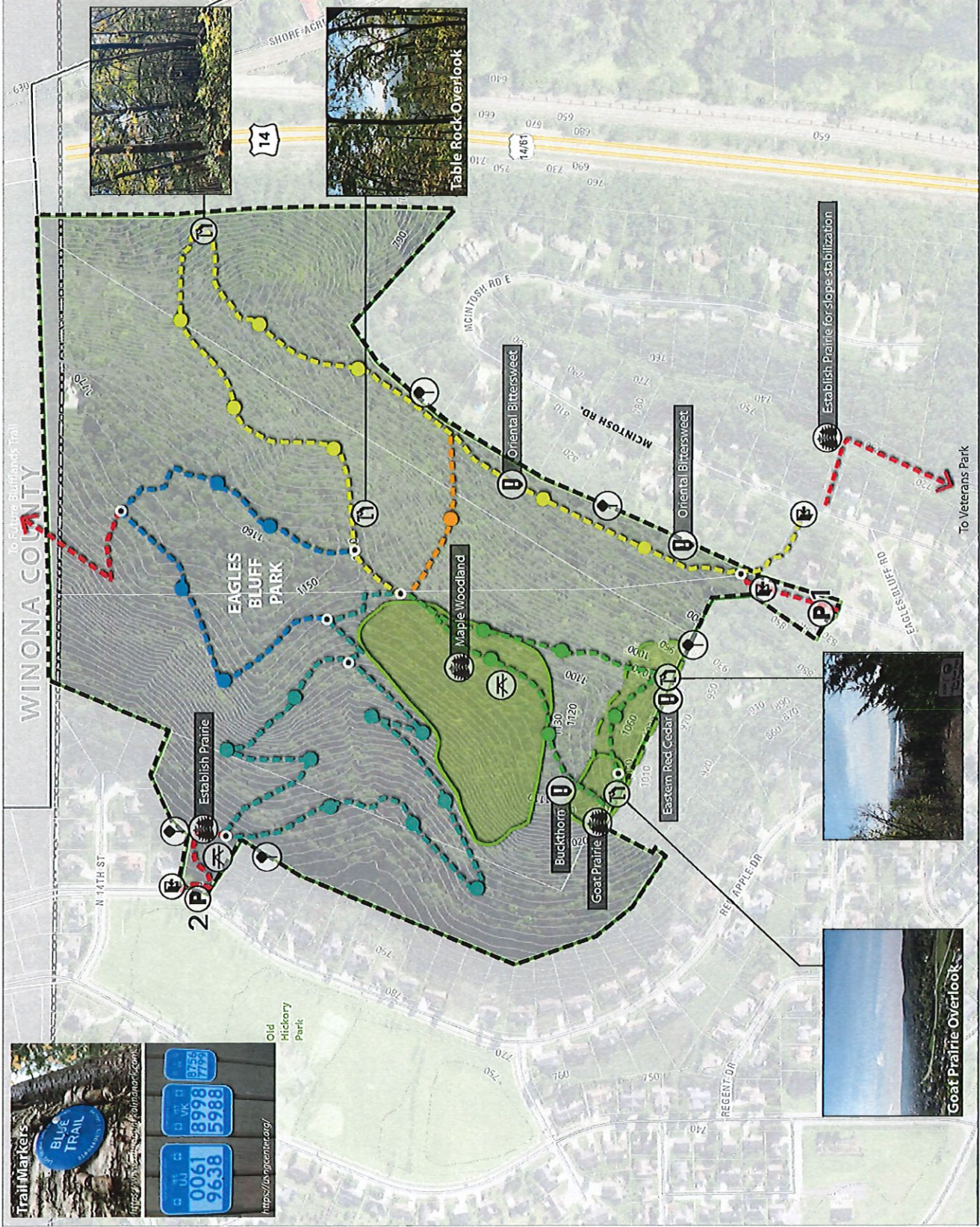
- 1- Possible Off-Street Parking at Pump Station Parcel (4-6 stalls)
- 2- On-Street Parking at Old Hickory (4-5 stalls)

DRAFT
 Eagle Bluff
 04/20/2021
 Lamp Plan Date (2015)
 MNDNR (2021)

REV 02.01.2022



0 100 200 Feet



Vetsch & Vollenweider Park

Note: All trail locations are approximate

Unnamed Trail

Add trail markers every 500 feet or as trail conditions require.

Accessible Trail

Improve trail to allow for ADA compliance to maximum extent practicable. Slopes less than 5%. Firm, stable and slip resistant surface (concrete or asphalt preferred). Develop route from accessible parking stall.

ADDED Trail (approximate location)

REMOVED Trail (approximate location)

Park Signage

Entrance/Gateway

Trail Signage

Overlook

Picnic Area

Significant Vegetation

Invasive Species Management

Trail Maintenance

Solar Array Expansion Opportunity

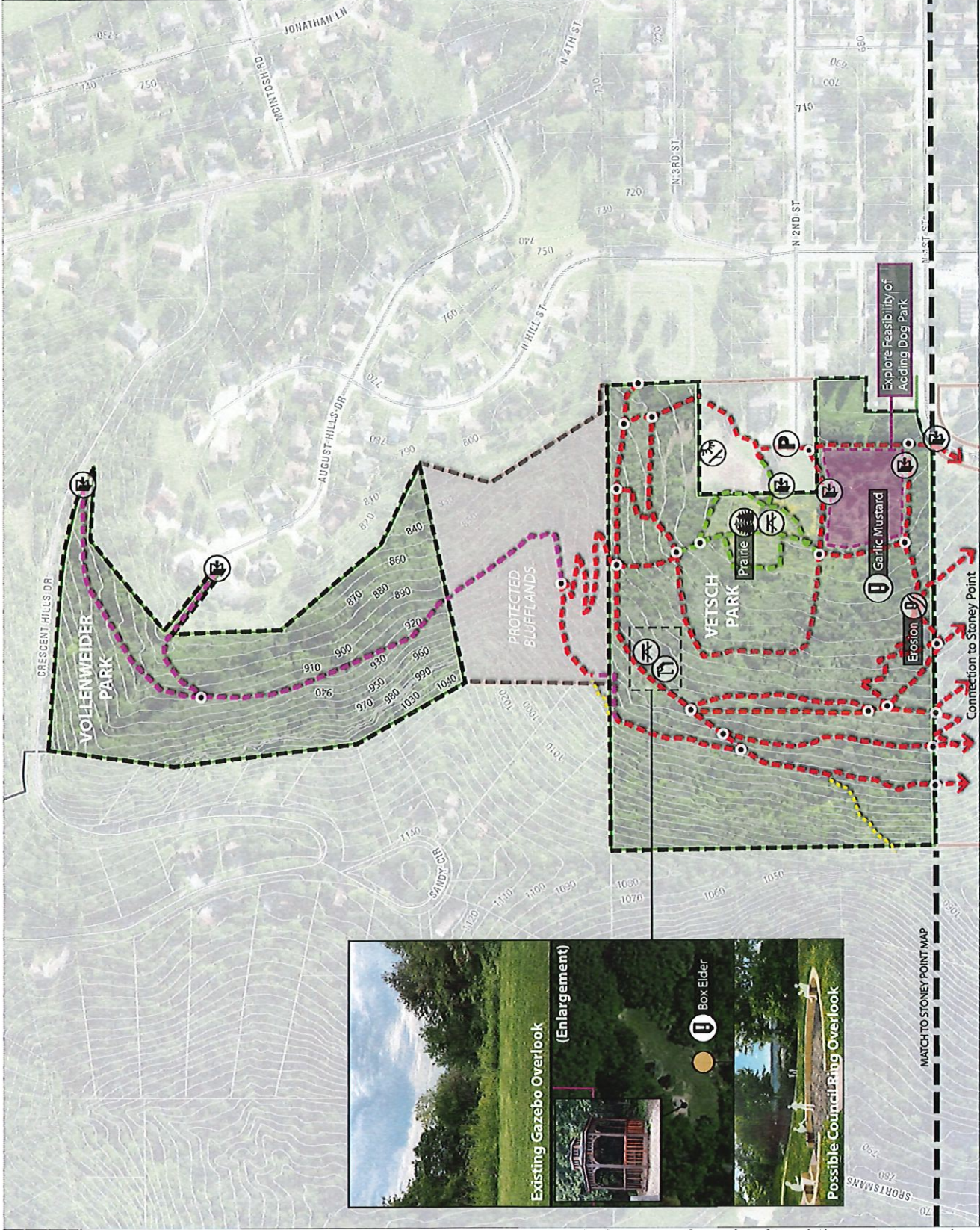
Parking

DRAFT
Hill Country (2021)
Map Data (2015)
MNDNR (2021)

REV 02.01.2022
03.16.2022

MSA

0 100 200 Feet



Existing Gazebo Overlook (Enlargement)



Box Elder



Possible Council Ring Overlook

MATCH TO STONEY POINT MAP

La Crescent CORP Study

Note: All trail locations are approximate

Unnamed Trail

Add trail markers every 500 feet or as trail conditions require.

Accessible Trail

Improve trail to allow for ADA compliance to maximum extent practicable. Slopes less than 5%. Firm, stable and slip resistant surface (concrete or asphalt preferred). Develop route from accessible parking stall.

ADDED Trail
(approximate location)

REMOVED Trail
(approximate location)

Park Signage

Entrance/Gateway

Trail Signage

Property Boundary Signage

Overlook

Picnic Area

Significant Vegetation

Invasive Species Management

Trail Maintenance

Solar Array Expansion Opportunity

Parking

Data Sources:
Houston County (202
Comp Plan Data (2015
M. Vinnick (2015)

REV 02.01.2022



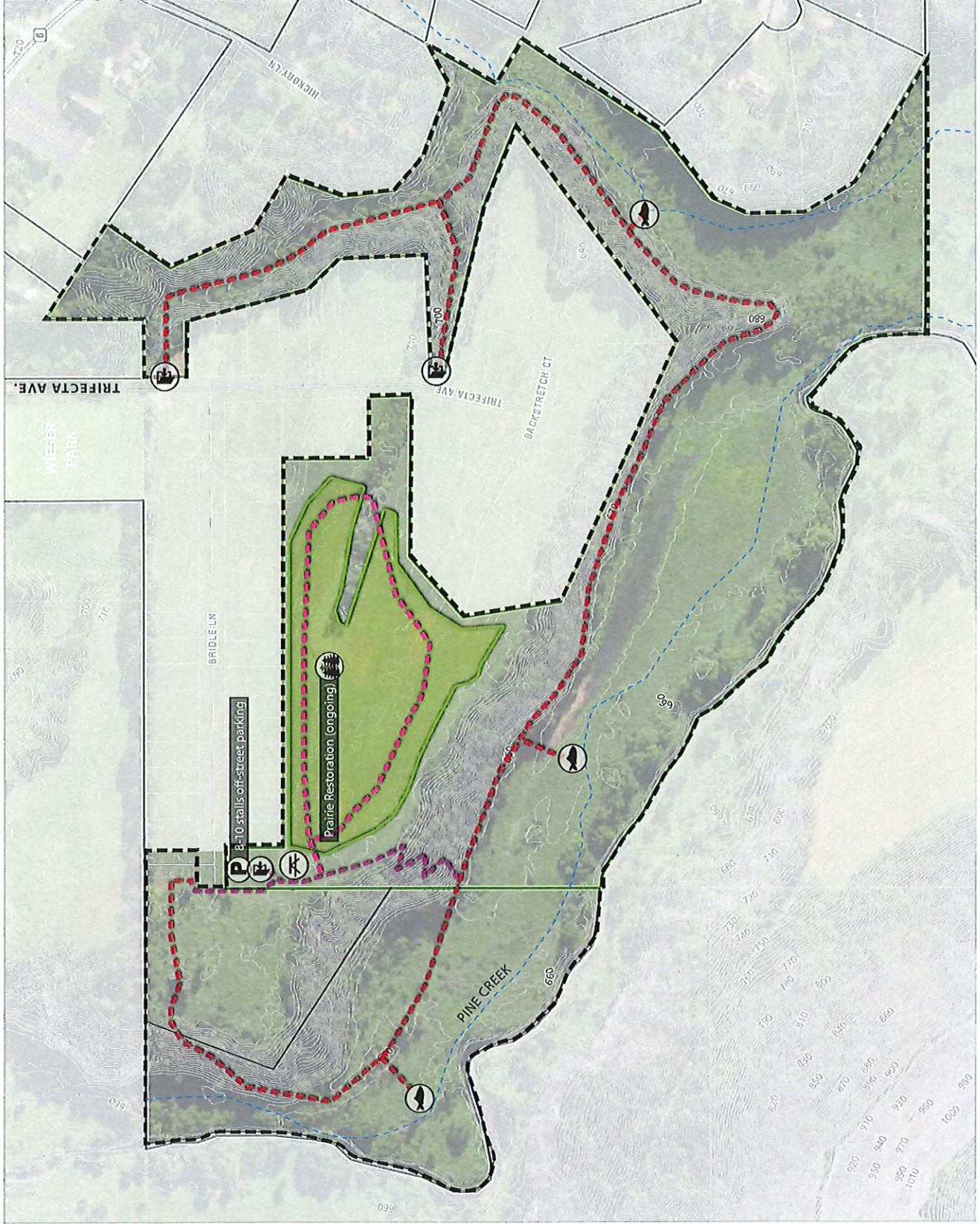
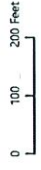
Horsetrack

- Unnamed Trail
(location is approximate)
- Improve Existing Trail - 10' wide gravel travel, maintain 5% slope or less where possible for ADA accessibility.
- ADDED Trail
(approximate location)
- Entrance/Gateway
- Park Signage
- Picnic Area
- Significant Vegetation
- Fishing Area
clear path to creek from trail, consider one location for improvements for ADA accessibility
- Parking

DRAFT

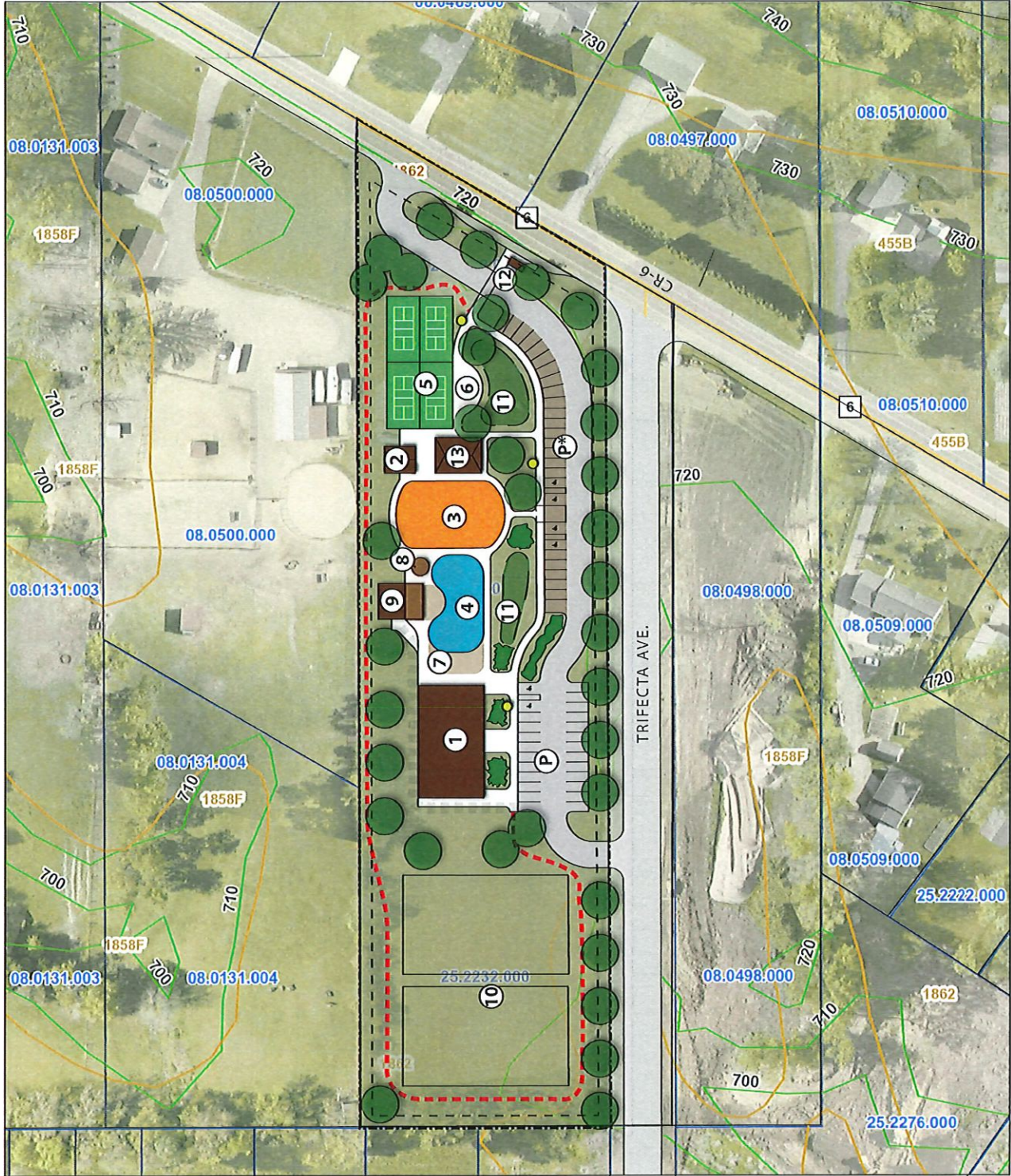
City of Southfield
Hickory Creek
Map Plan Data (2015)
MNDNR (2021)

REV 02.01.2022



OPTION A

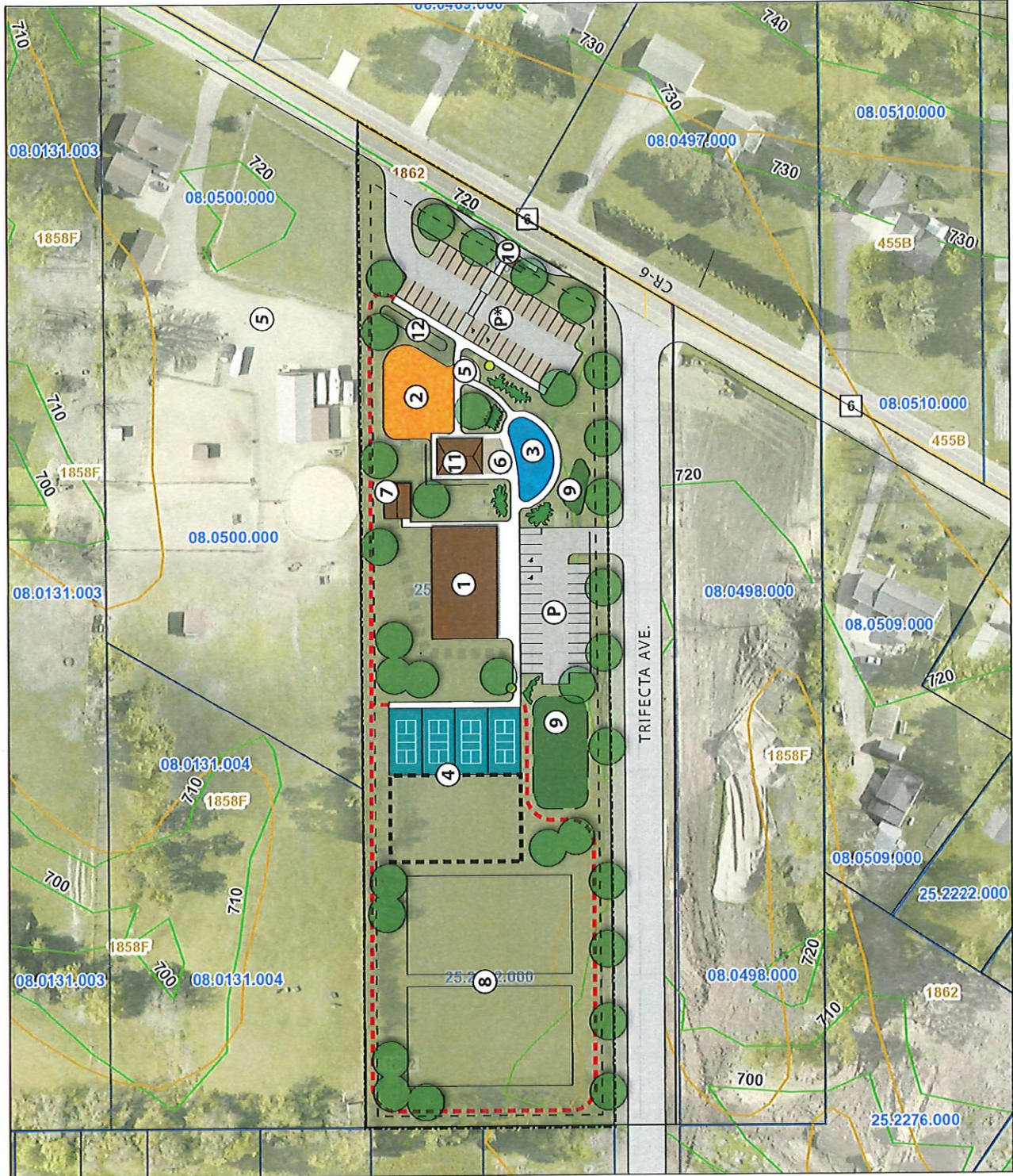
- DRAFT**
February 1, 2021



WIESER PARK CONCEPTUAL MASTER PLAN

OPTION B

- ① Shelter/Restrooms
(possible solar panels)
- ② Playground
- ③ Splash Pad
- ④ Pickleball Courts (4)
(possible expansion South)
- ⑤ Monument
- ⑥ Plaza/Seating Area
- ⑦ Storage/Equipment Building
- ⑧ Multi-Use Open Space
- ⑨ Stormwater/Rain Garden
- ⑩ Transit Stop
- ⑪ Existing Open Shelter
- ⑫ Berm
- Landscaping
- Trees
- Walking Trail
- Bike Racks
- Parking
- Parking - Possible Permeable Pavement



DRAFT
February 1, 2021



Recommendations

RECOMMENDATIONS

The quantitative, qualitative, and geographic analysis discussed in Chapter 4 reveals the need for improvements to existing facilities, the acquisition and development of new sites for future recreational use, and additional trail connections . It should be noted that some of the recommendations may require considerable cooperation with others, including the citizens of La Crescent, local civic and business associations, and State agencies. In nearly every case, more detailed planning, engineering, study, budgeting, and/or discussion will be necessary before decisions are made to actually acquire land or construct recreational facilities.

The recommendations of this plan are divided into four major sections: (1) existing park facilities (2) new park facilities; (3) trail improvements; and (4) other improvements.

The timeline for completion of recommendations is noted within each table of recommendations. High priority items should occur in the next 1-3 years (2024), Medium priority items should occur over the next three to five years (2026) and low priority items may not be completed within the next five years; however, initial planning activities may occur to bring these items closer to completion. Due to budgetary constraints it is unlikely that all of the recommendations within this chapter will be implemented in the next five years. Maintenance and improvement projects will be prioritized on an annual basis by City staff in conjunction with La Crescent's Park & Recreation Commission as part of the City's annual budget and Capital Improvement Plan (CIP).

Many of the recommendations regarding locating new park or trail facilities will be coordinated with the sale or donation of land by other parties or by obtaining easements for trails; therefore, the timing is much more variable. Acquisition projects will be implemented through donation, dedication, purchase, or a combination thereof.

5.1 EXISTING PARK FACILITIES

The following pages contain two-page spreads dedicated to each existing park in La Crescent. Each spread includes general information, facilities (and approximate install dates), and recommendations for improvements to existing parks. Master plans were completed for Eagles Bluff, Vollenweider/Vetsch/Stoney Point, Horsetrack Meadows, and Wieser Park and are included in this section. Some of the recommendations identified for existing parks are carried forward from the 2012 La Crescent Park and Recreation Plan. Many of the trail recommendations are from the 2017 La Crescent Blufflands Plan. The remaining recommendations reflect staff, commission, public and consultant feedback obtained during the planning process.



Horsetrack Meadows

MINI PARKS



Crescent Valley Park

Park Address: Valley Ln. & Crescent Ave.

Park Size: 0.5 Acres

EXISTING FACILITIES

TYPE
Playground Equipment (Installed 2018)
Picnic Tables
Benches

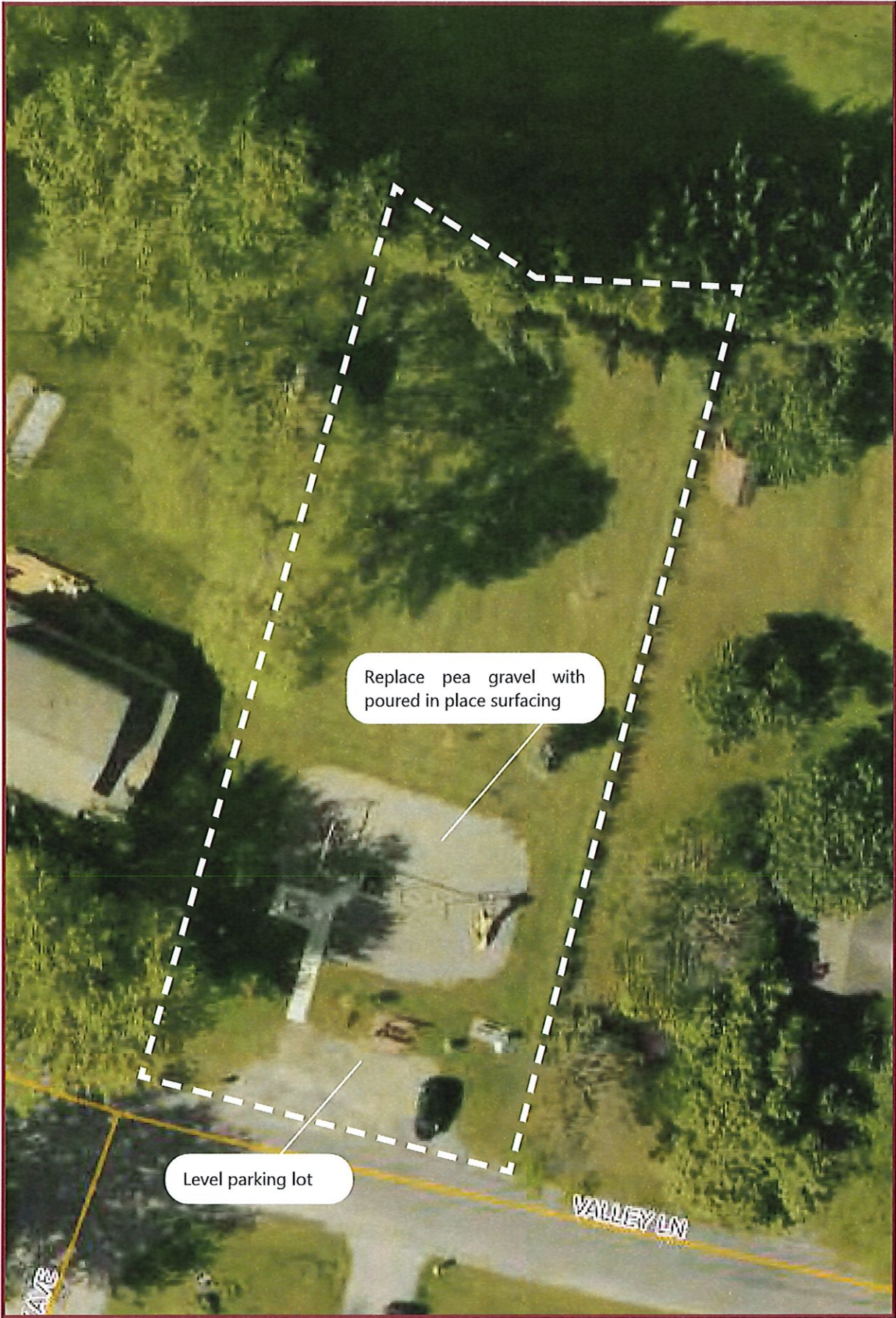
RECOMMENDATIONS

IMPROVEMENT	PRIORITY (LOW-MED-HIGH)	COST ESTIMATE
Replace pea gravel with poured in place surfacing or engineered wood fiber		
Level parking lot		

TBD-AFTER
CITY INPUT

* = recommendation carried forward from the city's 2012 Park & Recreation Plan

PARK AERIAL



Replace pea gravel with poured in place surfacing

Level parking lot

VALLEY LN

AVE



John S. Harris Park

Park Address: N. Elm St.

Park Size: 2.0 Acres

EXISTING FACILITIES

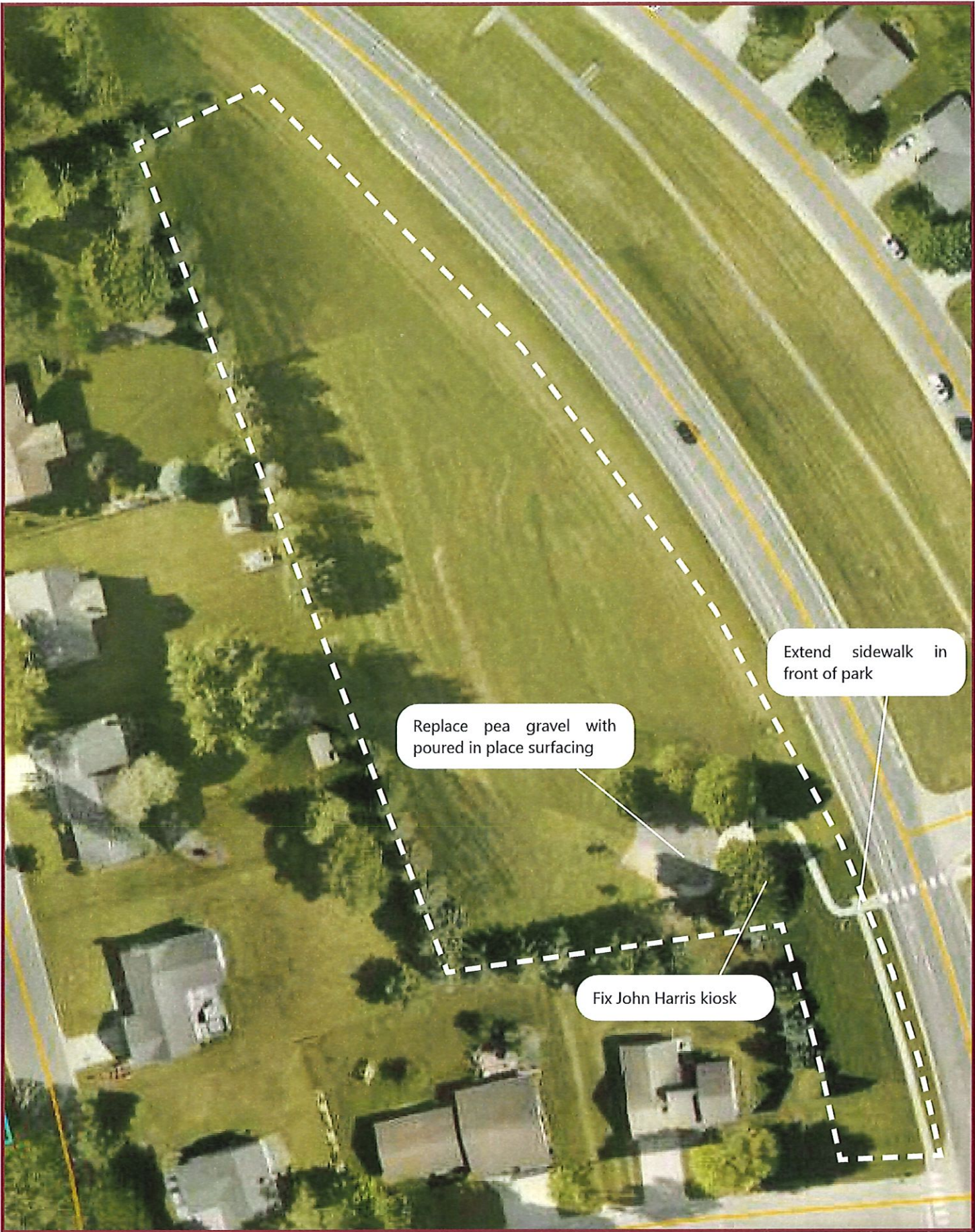
TYPE
Playground (Installed 2017)
Playfield
Picnic Tables
Benches

RECOMMENDATIONS

IMPROVEMENT	PRIORITY (LOW-MED-HIGH)	COST ESTIMATE
Extend sidewalk in front of park		
Fix John Harris kiosk		TBD-AFTER CITY INPUT
Replace pea gravel with poured in place surfacing or engineered wood fiber		
Add one or two play components for kids younger than 5		
Place ADA porta potty in park during summer months		

* = recommendation carried forward from the city's 2012 Park & Recreation Plan

PARK AERIAL



Extend sidewalk in front of park

Replace pea gravel with poured in place surfacing

Fix John Harris kiosk

NEIGHBORHOOD PARKS



Valley South Park

Park Address: Jupiter St. & S. 11th St.

Park Size: 4.0 Acres

EXISTING FACILITIES

TYPE
Playground (Installed 1998)
Playfield
Sledding Hill
Picnic Tables

RECOMMENDATIONS

IMPROVEMENT	PRIORITY (LOW-MED-HIGH)	COST ESTIMATE
Add restroom	TBD-AFTER CITY INPUT	
Update playground		
Replace pea gravel with poured in place surfacing		
Add pet waste station		

* = recommendation carried forward from the city's 2012 Park & Recreation Plan

PARK AERIAL





Wieser Memorial Park

Park Address: 1811 County 6

Park Size: 5.9 Acres

EXISTING FACILITIES

TYPE
Playground
Baseball Field
Volleyball Court
Open Air Shelter
Restroom
Parking Lot



SHELTER



SLIDE & SWINGS

RECOMMENDATIONS

IMPROVEMENT	PRIORITY (LOW-MED-HIGH)	COST ESTIMATE
	TBD-AFTER CITY INPUT	

* = recommendation carried forward from the city's 2012 Park & Recreation Plan

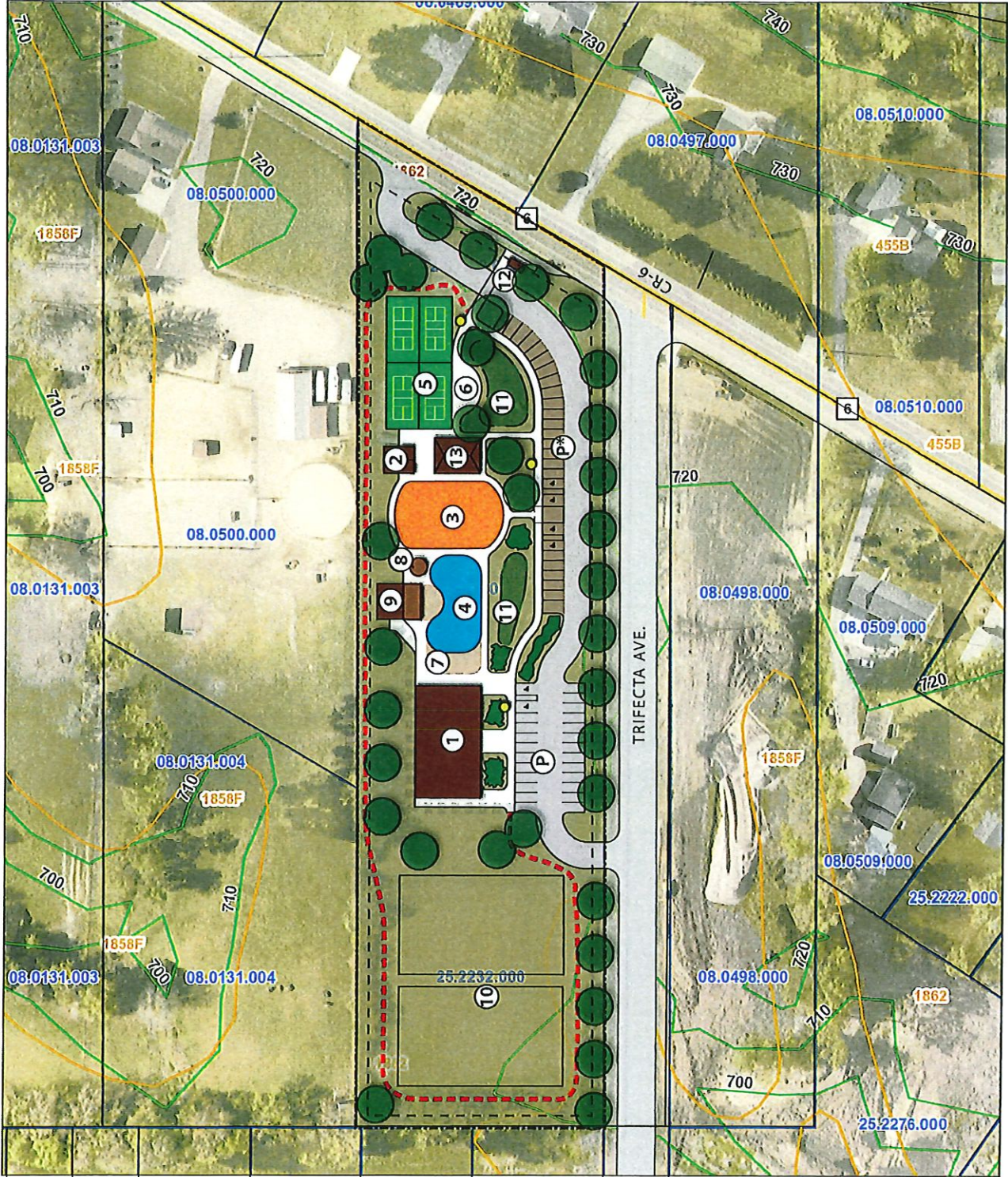
WIESER PARK

CONCEPTUAL MASTER PLAN

OPTION A

- ① Shelter/Restrooms (possible solar panels)
- ② Restroom
- ③ Playground
- ④ Splash Pad
- ⑤ Pickleball Courts (4)
- ⑥ Monument
- ⑦ Plaza/Seating Area
- ⑧ Shade(s)
- ⑨ Storage/Equipment Building and Pergola
- ⑩ Multi-Use Open Space
- ⑪ Stormwater/Rain Garden
- ⑫ Transit Stop
- ⑬ Existing Open Shelter
- Landscaping
- Trees
- Walking Trail
- Bike Racks
- Parking
- Parking - Possible Permeable Pavement

DRAFT
February 1, 2021



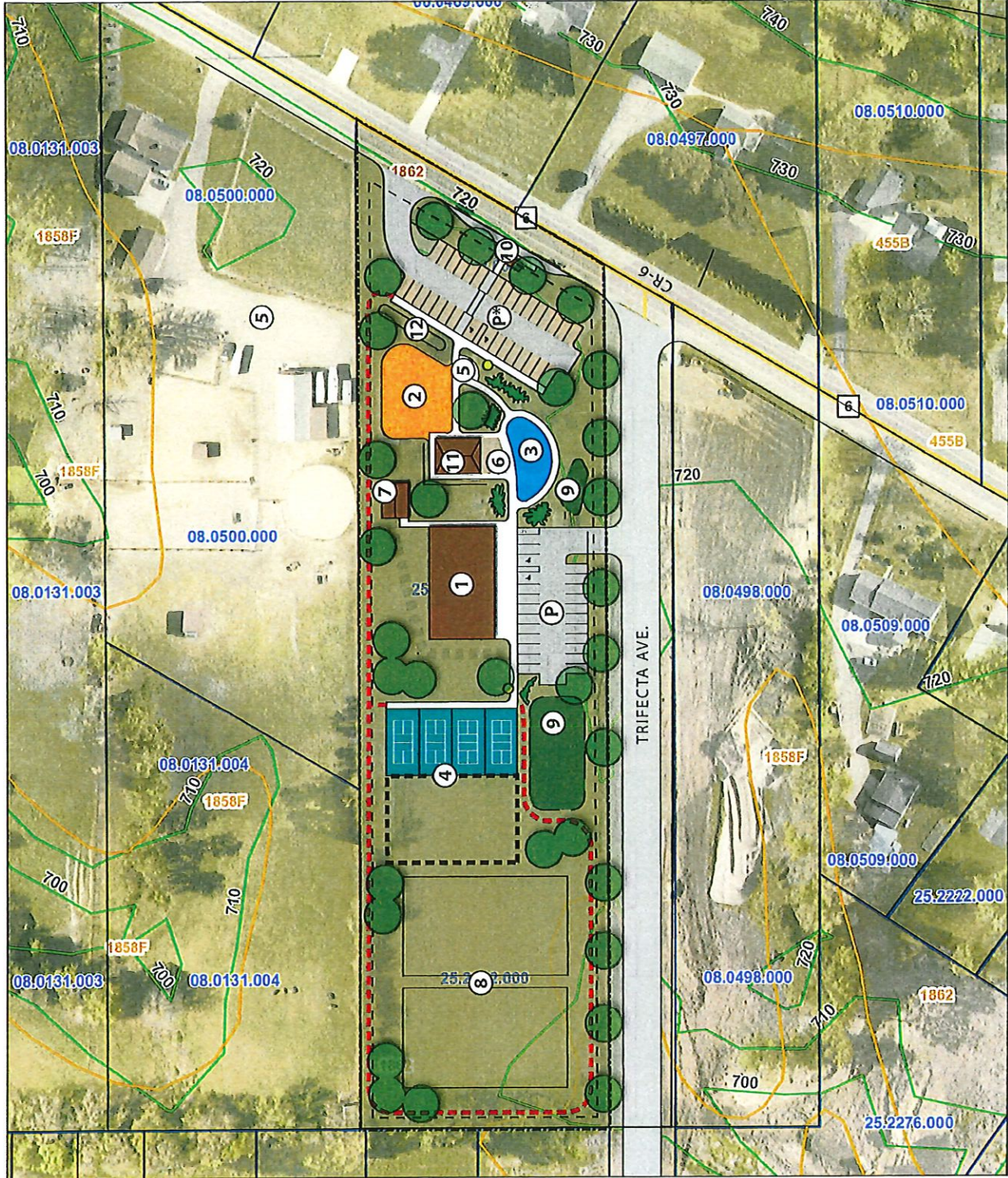
WIESER PARK CONCEPTUAL MASTER PLAN

OPTION B

- ① Shelter/Restrooms
(possible solar panels)
- ② Playground
- ③ Splash Pad
- ④ Pickleball Courts (4)
(possible expansion South)
- ⑤ Monument
- ⑥ Plaza/Seating Area
- ⑦ Storage/Equipment Building
- ⑧ Multi-Use Open Space
- ⑨ Stormwater/Rain Garden
- ⑩ Transit Stop
- ⑪ Existing Open Shelter
- ⑫ Berm
- Landscaping
- Trees
- Walking Trail
- Bike Racks
- Parking
- P* Parking - Possible Permeable Pavement

DRAFT

February 1, 2021



COMMUNITY PARKS



Abnet Field

Park Address: 520 S. 14th St.

Park Size: 10.4 Acres

EXISTING FACILITIES

TYPE
Baseball Fields (2)
Soccer Field
Playfield
Ice Skating/Hockey (Indoor)
Open-Air Shelter
Picnic Tables
Parking Lot

RECOMMENDATIONS

IMPROVEMENT	PRIORITY (LOW-MED-HIGH)	COST ESTIMATE
*Add pickleball courts (6) that can be overlaid with an outdoor skating rink during winter months	TBD-AFTER CITY INPUT	
Add open air shelters or shade structures near proposed pickleball courts		
Extend sidewalk at NE corner of park to connect to ballfields and shelter		
Remove orange posts on west side of park		
Add batting cage		
Add score board		
Replace existing open air shelter with a new shelter that contains restrooms, concessions, and storage for sport orgs/city use (12x10 or 12x16)		

PARK AERIAL



IMPROVEMENT	PRIORITY (LOW-MED-HIGH)	COST ESTIMATE
Partner with the School District to add dugout roofs		
Add lighting to ballfields		
Add skate/bike park		

* = recommendation carried forward from the city's 2012 Park & Recreation Plan



Frank J. Kistler Memorial Park

Park Address: 608 S. 7th St.

Park Size: 5.4 Acres

EXISTING FACILITIES

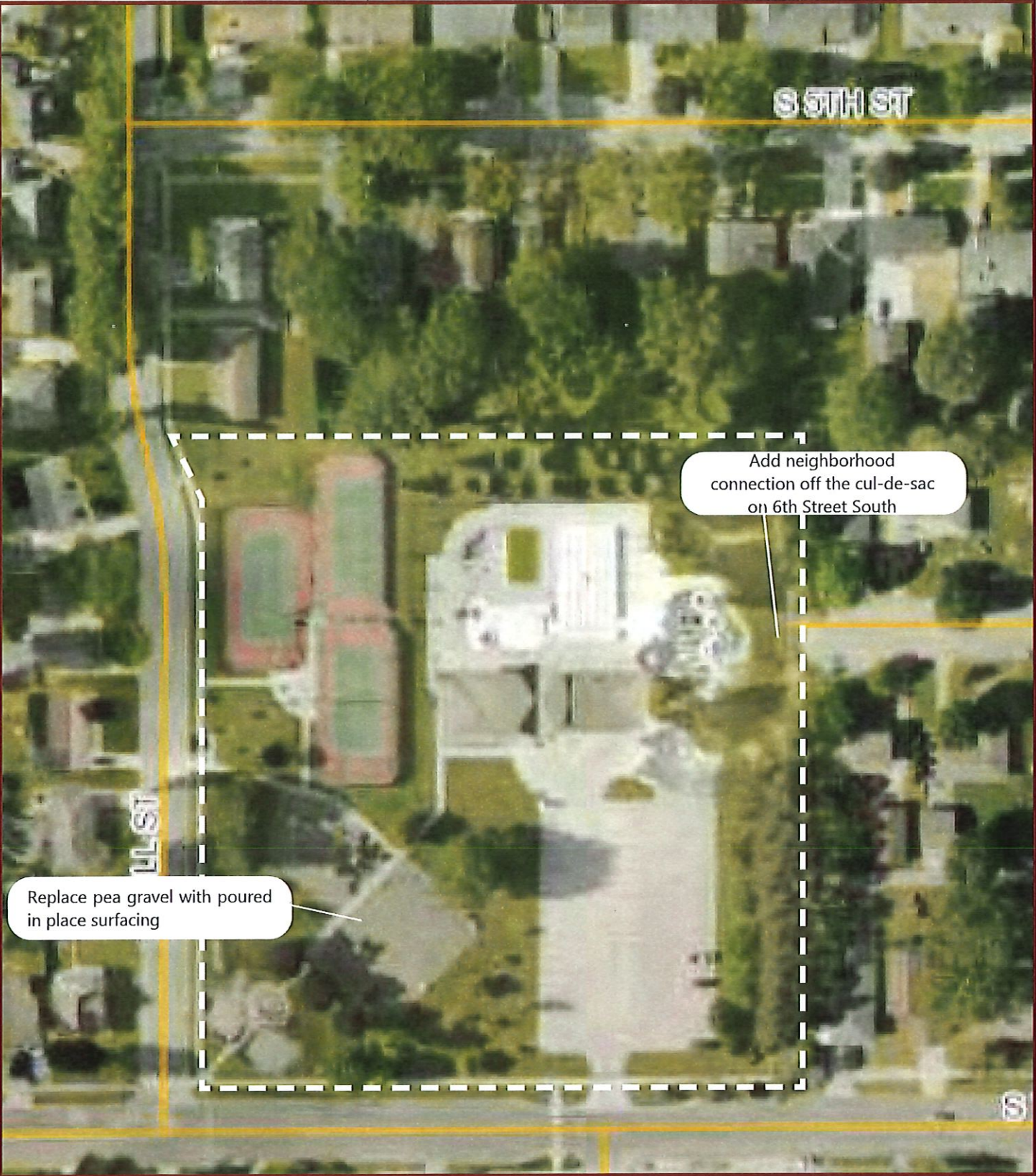
TYPE
Pool
Tennis Court (3)
Playground Equipment (Installed 1995)
Parking Lot
Wi-fi

RECOMMENDATIONS

IMPROVEMENT	PRIORITY (LOW-MED-HIGH)	COST ESTIMATE
*Add neighborhood switchback connection off of the cul-de-sac on 6th Street South	TBD-AFTER CITY INPUT	
Replace pea gravel with poured in place surfacing.		

* = recommendation carried forward from the city's 2012 Park & Recreation Plan

PARK AERIAL





Old Hickory Park

Park Address: 1200 Johnathan Ln.
Park Size: 17.8 Acres

EXISTING FACILITIES

TYPE
Playground Equipment (Installed 2008)
Baseball Fields
Basketball Court
Volleyball Court
Open-Air Shelter
Picnic Tables
Parking Lot
Restrooms
Soccer Fields

RECOMMENDATIONS

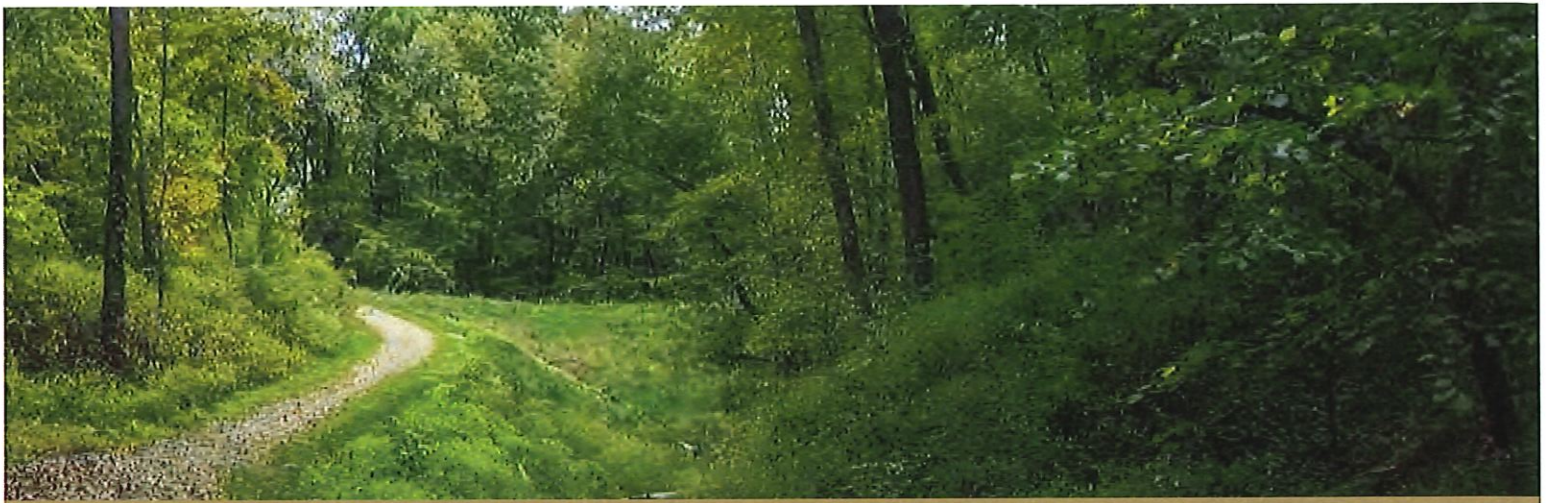
IMPROVEMENT	PRIORITY (LOW-MED-HIGH)	COST ESTIMATE
*Establish prairie plantings in stormwater retention area. Mow plantings every fall so this area can still be used for sledding.	TBD-AFTER CITY INPUT	
*Add path connecting sidewalk along Red Apple Dr to basketball court, playground/shelter, and ballfield		
* Pave gravel parking lot serving the other shelter and playground area		
Add storage space onto existing shelter (12x10 or 12x16)		
Add concessions onto existing shelters		
Consider as an alternative for ice rink if not at Abnet Field		

PARK AERIAL



IMPROVEMENT	PRIORITY (LOW-MED-HIGH)	COST ESTIMATE
Add scoreboard		
Add bleachers to ballfield		

* = recommendation carried forward from the city's 2012 Park & Recreation Plan



Veteran's Park

Park Address: 595 Veterans Parkway
Park Size: 8 Acres

EXISTING FACILITIES

TYPE
Playground Equipment (Installed 2020)
Baseball Fields
Soccer Field
Skate Park (Installed 2003)
Bike/Walking Trail
Scoreboard (New in 2022)

RECOMMENDATIONS

IMPROVEMENT	PRIORITY (LOW-MED-HIGH)	COST ESTIMATE
*Add a small community amphitheater that can be used for concerts or rented out for weddings	TBD-AFTER CITY INPUT	
Add drinking fountain		
Add narrow canopy with solar panels over portion of parking lot to be used by Farmers Market		
Add storage space onto existing shelter (12x10 or 12x16)		
Add sidewalk connection from playground to Park Street, connect to N 4th Street sidewalk		
Move skate park to Abnet Field		

* = recommendation carried forward from the city's 2012 Park & Recreation Plan

PARK AERIAL



Nature Preserve



North End Park

Park Address: Ambrosia Street
Park Size: 10 Acres

EXISTING FACILITIES

TYPE
Open Space

RECOMMENDATIONS

IMPROVEMENT	PRIORITY (LOW-MED-HIGH)	COST ESTIMATE
*Add walking trails with scenic overlooks	TBD-AFTER CITY INPUT	
Buckthorn removal needed where rows of apple trees were previously removed.		
Explore feasibility with Winona County of adding crosswalk from Apple Blossom Park to North End Park		

* = recommendation carried forward from the city's 2012 Park & Recreation Plan

PARK AERIAL



Add walking trails

Explore feasibility with Winona County of adding crosswalk from Apple Blossom Park to North End Park

Buckthorn removal needed



Eagles Bluff Park

Park Address: 422 Red Apple Drive
Park Size: 107.1 Acres

EXISTING FACILITIES

TYPE
Walking Trail



EAST TRAIL ENTRANCE



TRAIL SIGNAGE

RECOMMENDATIONS

IMPROVEMENT	PRIORITY (LOW-MED-HIGH)	COST ESTIMATE
	TBD-AFTER CITY INPUT	

* = recommendation carried forward from the city's 2012 Park & Recreation Plan

Trail Markers



<https://www.adirondackalmanack.com/>



<https://usngcenter.org/>

Old Hickory Park

WINONA COUNTY

To Future Bluff

N 14TH ST

2 P

Establish Prairie

EAGLES BLUFF PARK

Maple Woodland

Buckthorn

Goat Prairie

Eastern Red Cedar

Orient

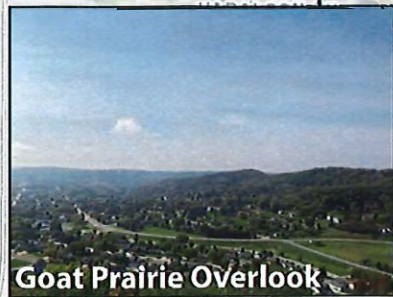
REGENT DR

RED APPLE DR

EAGLES BLUFF RD

Goat Prairie Overlook

To Veterans



Eagles Bluff

Note: All trail locations are approximate

McIntosh Trail

Improve trail to maintain minimum 32" width. Consider steps or handrails where slope exceeds 4:1 horizontal to vertical ratio.

Eagle's Bluff Loop Trail

Red Apple Trail

Red Apple Rocks Trail

Improve trail to maintain minimum 32" width. Consider adding switch backs, steps or handrails where slope exceeds 4:1 horizontal to vertical ratio.

Boy Scout Trail

Unnamed Trail

Trail Marker



Entrance/Gateway



Trail Wayfinding Signage



Property Boundary Signage



Overlook

Improve signage and documentation of viewshed.



Picnic Area



Significant Vegetation



Invasive Species Management



Parking

1- Possible Off-Street Parking at Pump Station Parcel. (4-6 stalls)

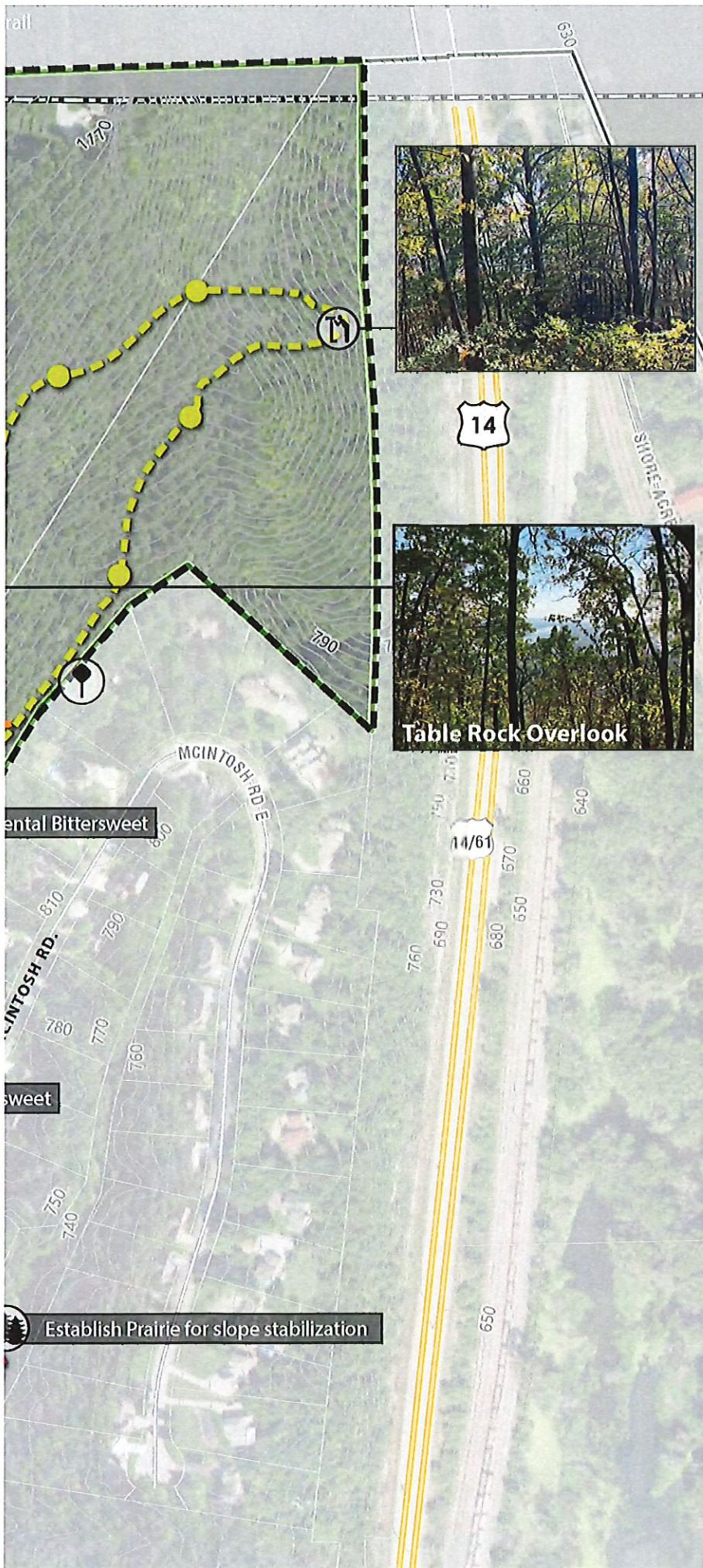
2- On-Street Parking at Old Hickory (4-5 stalls)

DRAFT
Data Source:
McIntosh County (2021)
Camp Plan Data (2015)
MNDNR (2021)

REV 02.01.2022



0 100 200 Feet





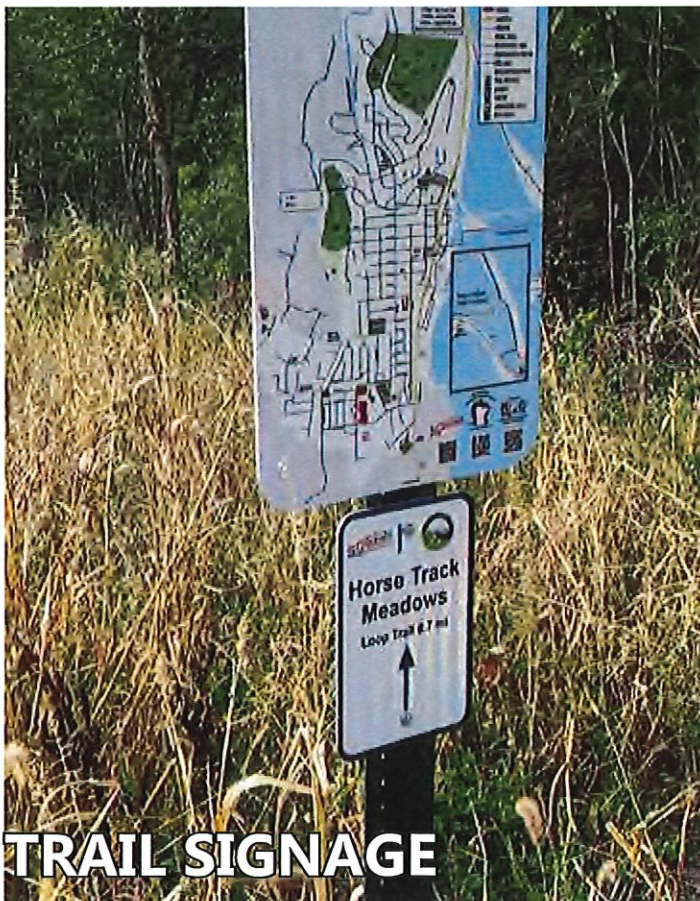
Horsetrack Meadows

Park Address: Bridle Ln

Park Size: 51.8 Acres

EXISTING FACILITIES

TYPE
Walking trail



TRAIL SIGNAGE

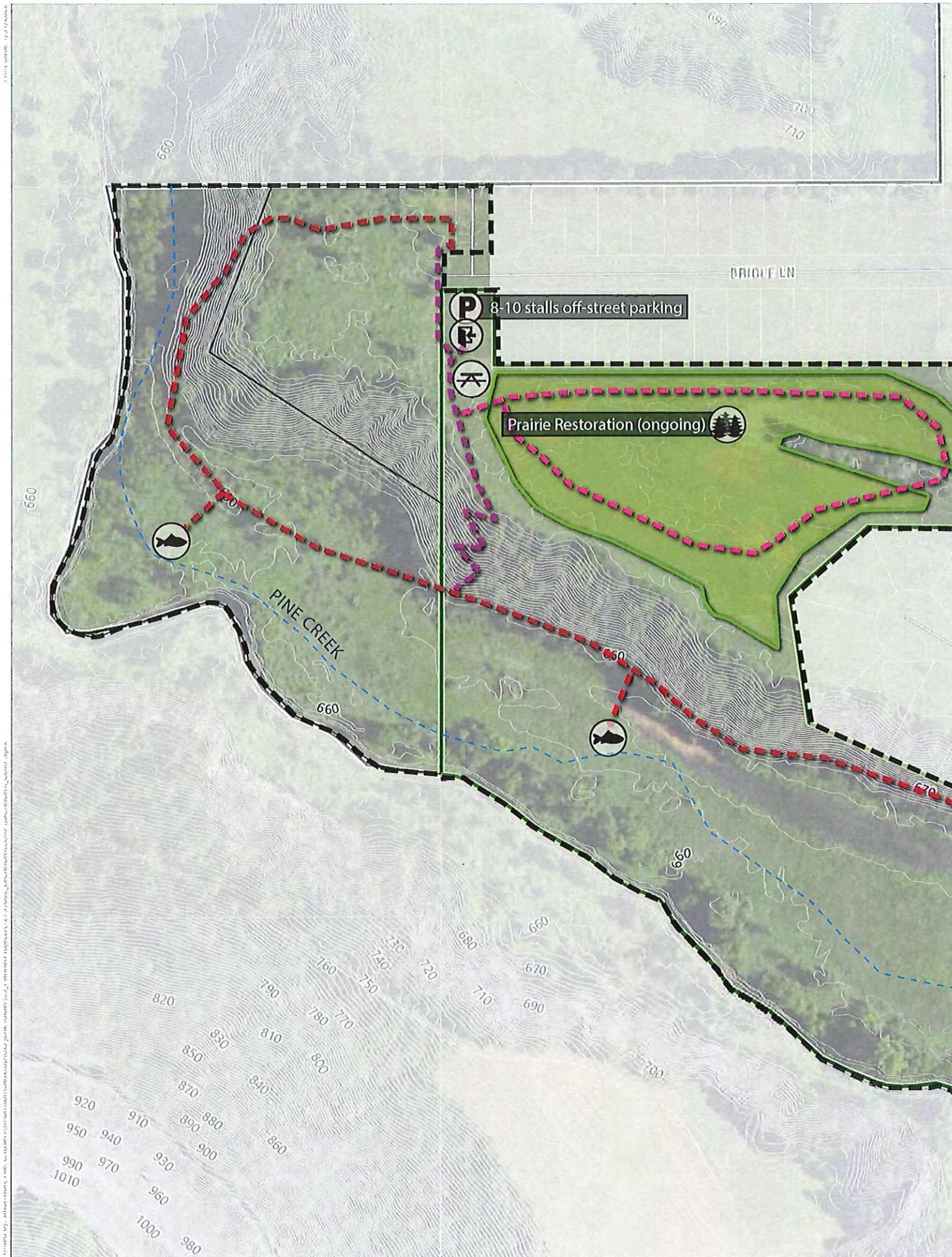


TRAIL

RECOMMENDATIONS

IMPROVEMENT	PRIORITY (LOW-MED-HIGH)	COST ESTIMATE
	TBD-AFTER CITY INPUT	

** = recommendation carried forward from the city's 2012 Park & Recreation Plan*



Horsetrack

--- Unnamed Trail
(location is approximate)

Improve Existing Trail - 10' wide gravel travel, maintain 5% slope or less where possible for ADA accessibility.

--- ADDED Trail
(approximate location)



Entrance/Gateway



Park Signage



Picnic Area



Significant Vegetation



Fishing Area

clear path to creek from trail, consider one location for improvements for ADA accessibility



Parking

DRAFT
Lentz Township,
Harrison County (2021)
Camp Plan Data (2015)
MNDNR (2021)

REV 02.01.2022



0 100 200 Feet





Vetsch Park

Park Address: 722 N 2nd Street
Park Size: 25 Acres

EXISTING FACILITIES

TYPE
Walking Trail
Gazebo

RECOMMENDATIONS

IMPROVEMENT	PRIORITY (LOW-MED-HIGH)	COST ESTIMATE
	TBD-AFTER CITY INPUT	

* = recommendation carried forward from the city's 2012 Park & Recreation Plan



Vollenweider Park

Park Address: Crescent Hills Drive
Park Size: 11 Acres

EXISTING FACILITIES

TYPE
Walking Trail

RECOMMENDATIONS

IMPROVEMENT	PRIORITY (LOW-MED-HIGH)	COST ESTIMATE

TBD-AFTER
CITY INPUT

* = recommendation carried forward from the city's 2012 Park & Recreation Plan



Vetsch & Vollenweider Park

Note: All trail locations are approximate

--- Unnamed Trail

Add trail markers every 500 feet or as trail conditions require.

--- Accessible Trail

Improve trail to allow for ADA compliance to maximum extent practicable. Slopes less than 5%. Firm, stable and slip resistant surface (concrete or asphalt preferred). Develop route from accessible parking stall.

--- ADDED Trail (approximate location)

--- REMOVED Trail (approximate location)



Park Signage



Entrance/Gateway



Trail Signage



Overlook



Picnic Area



Significant Vegetation



Invasive Species Management



Trail Maintenance



Solar Array Expansion Opportunity



Parking

DRAFT
 State of Illinois
 Cook County (2021)
 Camp Plan Data (2015)
 MNDNR (2021)

REV 02.01.2022



0 100 200 Feet



Protected Bluffland

(not city park)



Stoney Point

Park Address: Stoney Point Rd.
Park Size: 59.6 Acres

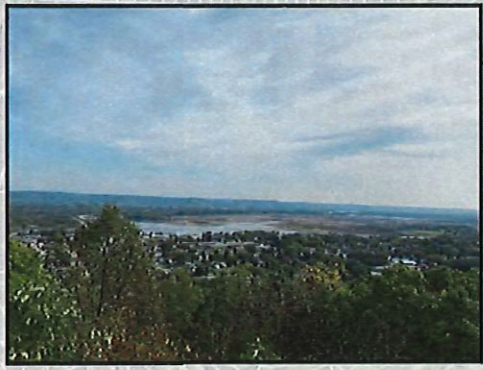
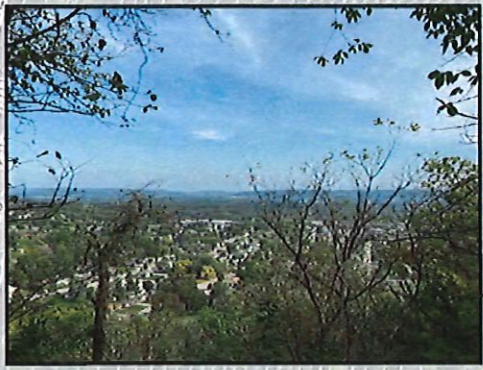
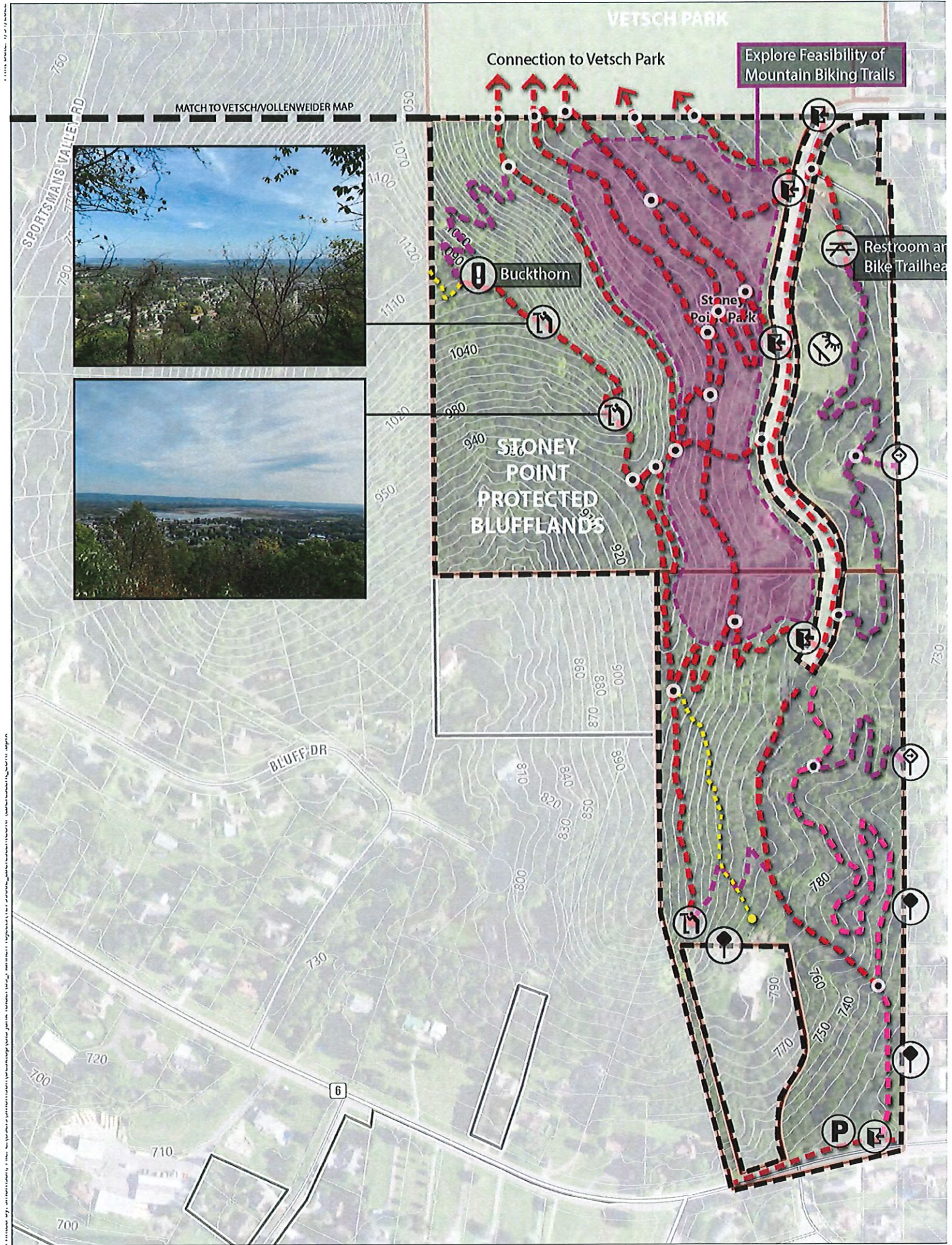
EXISTING FACILITIES

TYPE
Bike/Walking Trails

RECOMMENDATIONS

IMPROVEMENT	PRIORITY (LOW-MED-HIGH)	COST ESTIMATE
	TBD-AFTER CITY INPUT	

* = recommendation carried forward from the city's 2012 Park & Recreation Plan



Stoney Point Park

La Crescent CORP Study

Note: All trail locations are approximate

--- Unnamed Trail

Add trail markers every 500 feet or as trail conditions require.

--- Accessible Trail

Improve trail to allow for ADA compliance to maximum extent practicable. Slopes less than 5%. Firm, stable and slip resistant surface (concrete or asphalt preferred). Develop route from accessible parking stall.

--- ADDED Trail (approximate location)

--- REMOVED Trail (approximate location)



Park Signage



Entrance/Gateway



Trail Signage



Property Boundary Signage



Overlook



Picnic Area



Significant Vegetation



Invasive Species Management



Trail Maintenance



Solar Array Expansion Opportunity



Parking

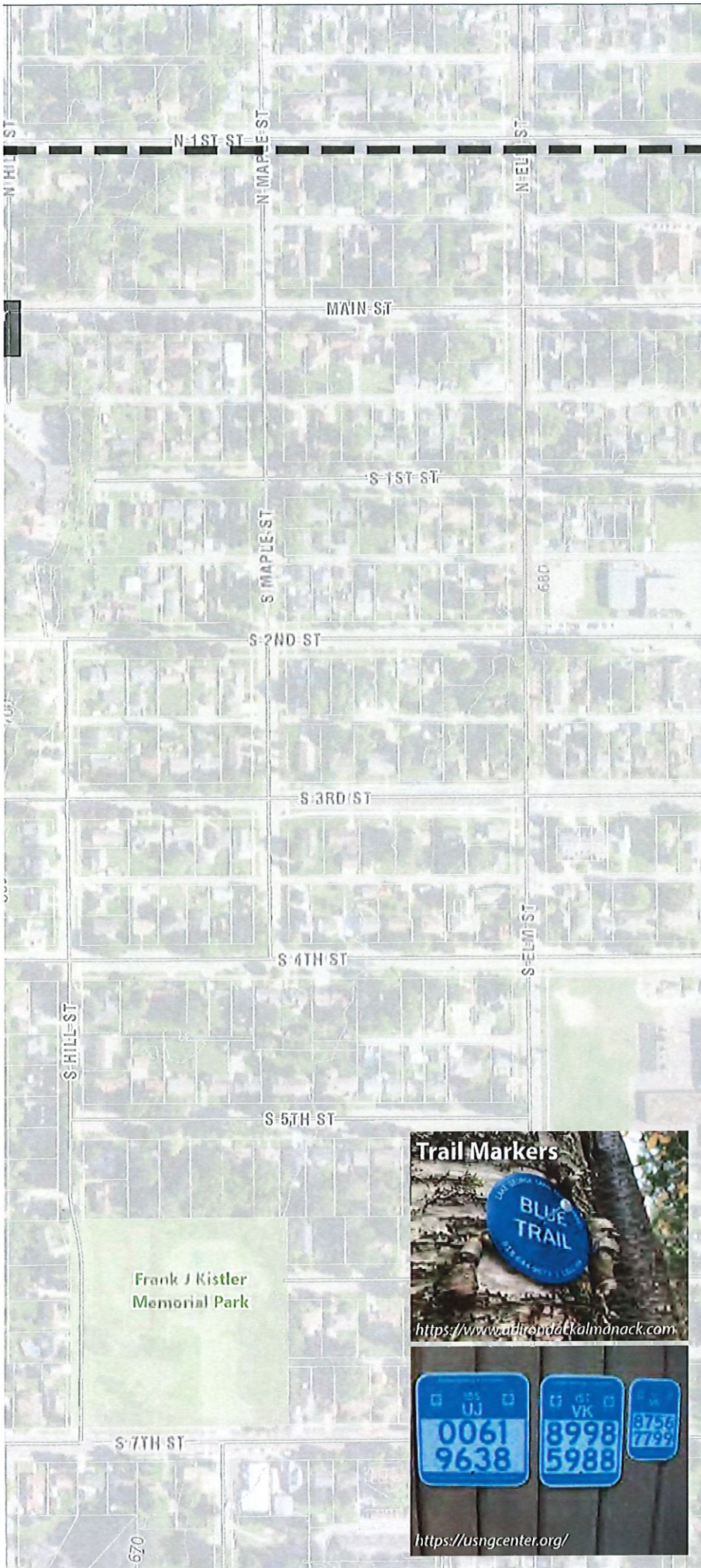
Data Sources:
Houston County (2021)
Comp Plan Data (2015)
M/DNR (2017)

DRAFT

REV 02.01.2022



0 100 200 Feet



RECOMMENDATIONS

5.2 NEW AND EXPANDED PARK FACILITIES

New Park Facilities

The City should develop new parks in areas that are underserved by existing facilities and areas where future residential expansion is anticipated to occur. There should be a focus on the acquisition of park and open space which will advance the goals and policies of this plan and the La Crescent Comprehensive Plan.

The New Parks & Trails Recommendations Map in Appendix C (Figure 5.1) identifies the location for potential new facilities based in part on La Crescent's future land use plan (see Section 2.x) areas potentially underserved by parks (Figure 5.2), and public engagement processes that identified general community priority and need.

- A. Site A is a city-owned property that houses a brush drop off site and open storage for a private tress manufacturer. The truss manufacturer has use of the property on a lease basis. In the future, this area has the potential to be converted to a park. A park in this location could include camp sites and serve as a trail head for the Root River, Wagon Wheel Trail, and Mississippi River Trail. The City could consider development of snowshoe and fat tire or cross country ski trails for winter use.
- B. Site B is a potential neighborhood park as the City expands west. The park should be between three and ten acres and include a multi-sport court, restroom/shelter/storage, lighted softball fields, playground equipment, and parking.
- C. Site C is a potential special use park as the City expands west. The park should be at least two acres in size and could include a dog park and trails that eventually connects to the walking trail at Horsetrack Meadows.

5.3 TRAIL IMPROVEMENTS

The City should develop a local system of trails that link to regional trails (Mississippi River Trail, Root River Trail, and the Wagon Wheel Trail) and trail systems in adjacent communities. The

proposed trails map show recommended bike/ped improvements including recommendations from the Blufflands Plan that was completed in 2016. A map of the proposed routes and trail improvements can be found in Appendix C (Figure 5.1). Descriptions of the trail recommendations are shown in the table on the following page.

5.5 OTHER RECOMMENDATIONS

General Parks

- Complete ADA audit of all City parks and develop an ADA transition plan.
- Expand wi-fi availability to all City parks.
- *Add a small entry plaza at the northwest corner of the intersection of HWY 61 and 3rd St. South.
- If a bike course is developed at Stoney Point, the City and partners could host a work day or fundraising events for the course. These events can help maintain the trails and also raise awareness of the opportunities available to the community.
- Consider posting signage or a QR code the park users can scan to determine whether or not a park shelter is reserved at any given time.
- Identify a park to install inclusive playground equipment.
- When updating amenities at parks, consider recreation amenities for a variety of age groups.
- Ensure adequate benches are available at parks with playgrounds for caregivers to watch children.
- If the §90.13 of the City's ordinances is updated to allow dogs in more parks, install dog waste stations in all parks that allow dogs.

General Trails

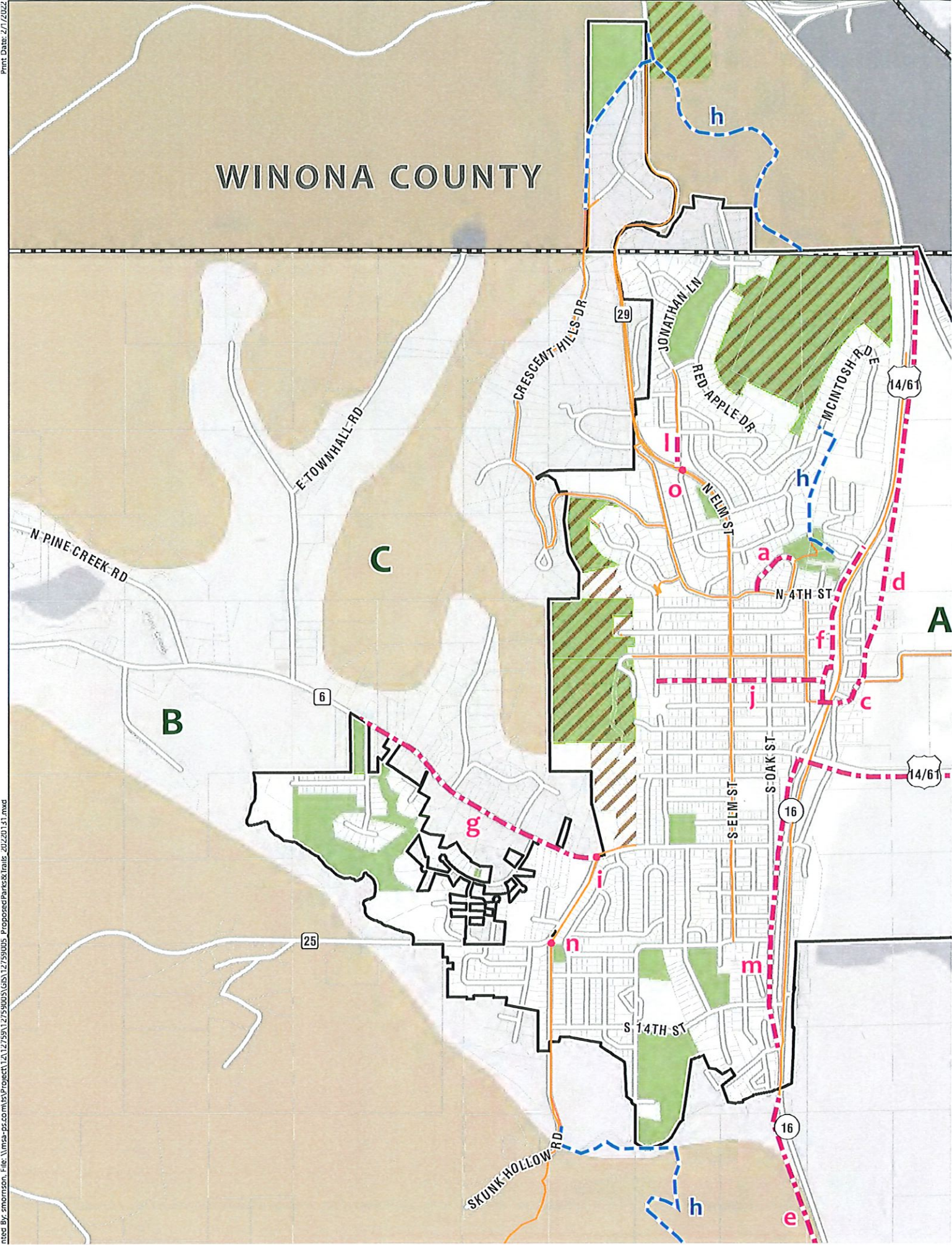
- Implement Blufflands Trail loop through city as shown in 2017 Blufflands Plan.
- *Create a more connected trail system. There are currently three key regional and national segments currently under various stages of planning and development (Wagon Wheel Trail, Mississippi River Trail, and the Root River Trail).
- Add wayfinding signage along the city's trails to better direct people to the City's downtown and parks.
- Expand ADA accessibility of all trails within the City with a goal of providing at least one fully ADA accessible route through each park.

Route	Description
Trail Connections	
a	Add sidewalk to west connecting Veterans Park to Park Street (connect to 4th into overall sidewalk system).
b	Continue Phases 2 and 3 of Wagon Wheel Trail. Phase 2 connects from Shore Acres Road to the West Channel Bridge. Phase 3 will provide a grade separated connection from the north side of Highway 61 to the south side.
c	Connect Wagon Wheel Trail on Main Street to new bike/ped bridge crossing HWY 61 at S. 1st St.
d	Support off-road trail extension of Mississippi River Trail from Wagon Wheel Trail to the north.
e	Support extension of the Mississippi River trail from the Wagon Wheel Trail to the south (Miller's Corner, HWY 16/26 intersection).
f	Add off-road trail along frontage road (N. Chestnut St.) that connects from Veterans Park to new bike/ped bridge across HWY 61/14. Extend N. Chestnut St. across N. 4th St. where there is currently a gap in the road.
g	Add off-road trail connecting new Horsetrack Meadows development to trails at Stoney Point.
h	Implement segments of the blufflands trail from the 2016 Blufflands Trail Plan.
i	Bike/pedestrian crosswalk enhancements needed to improve safety at the intersection of Hwys 6 and 25 - consider rapid flash beacon.
j	Add bike lane along Main St.
k	Add off-road trail between future phase of the Wagon Wheel Trail and HWY 16.
l	Extend sidewalk from N. Elm St. to Old Hickory Park.
m	Add sidewalk or off-road trail between Kistler Dr. and S. 3rd St.
n	Bike/pedestrian crosswalk enhancements needed to improve safety at the intersection of HWY 25 and Skunk Hollow Rd - consider rapid flash beacon.
o	Pedestrian crosswalk enhancements needed to improve safety at the intersection of N. Elm St. and Jonathan Ln. - consider rapid flash beacon.



Example Trail Markers

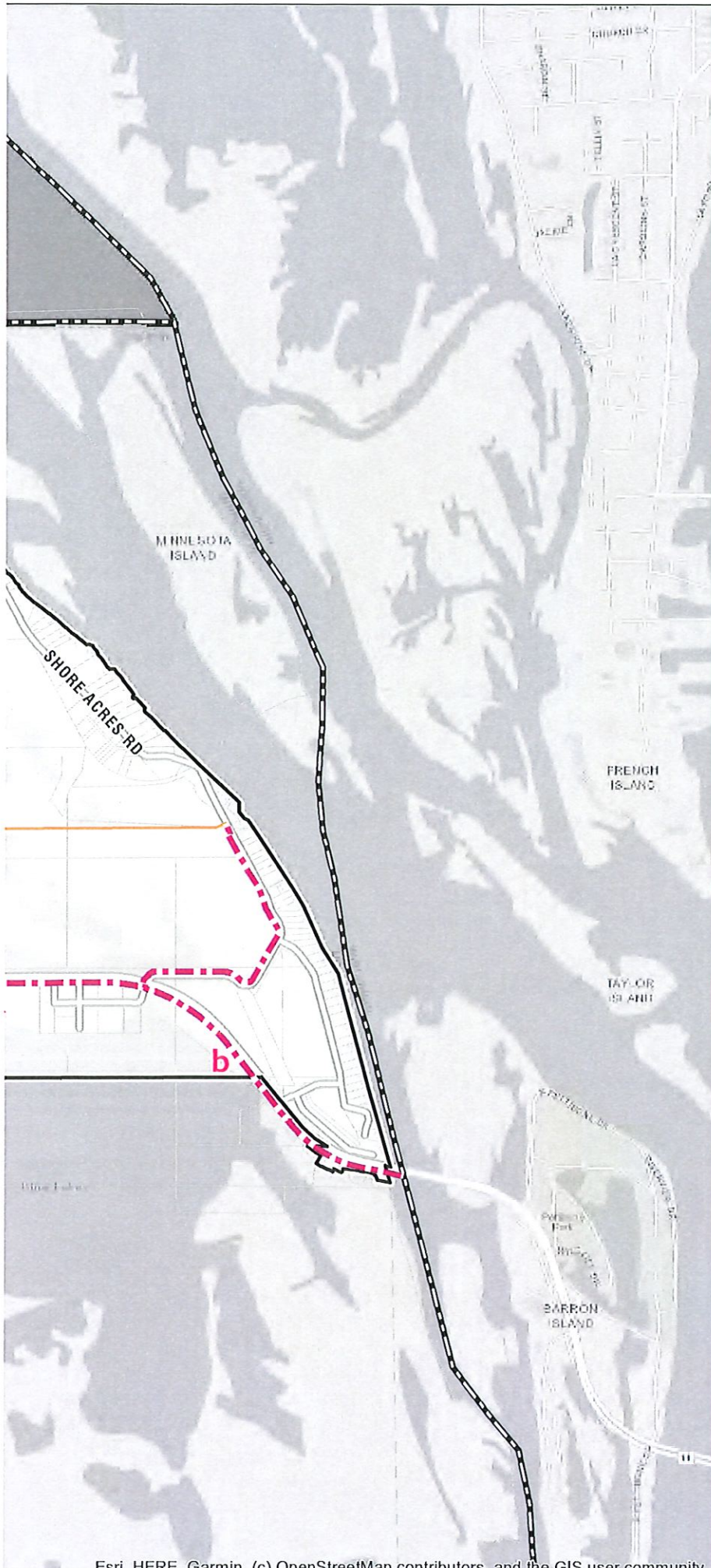
WINONA COUNTY



Park and Trail Recommendations

La Crescent CORP Study

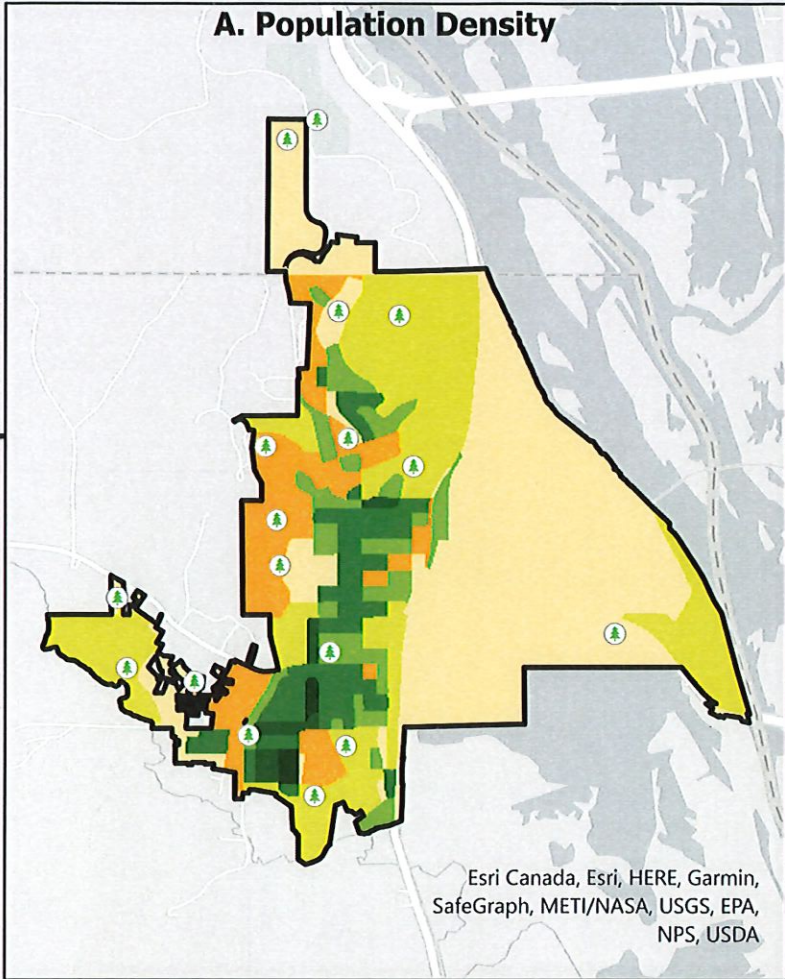
**City of La Crescent
Houston County, MN**



- A** Park Recommendation
- a** Bike/Ped Improvement Recommendation
- a** Trail Recommendation
- a** Proposed Regional Bluffland Trail (2016 Bluffland Plan)
- a** Existing Trails
- a** Bluffland Conservation Area
- a** Park
- a** Existing Protected Blufflands*
- a** City of La Crescent
- a** County Boundary

Data Sources:
Houston County (2021)
Comp Plan Data (2015)
MNDNR (2021)

A. Population Density



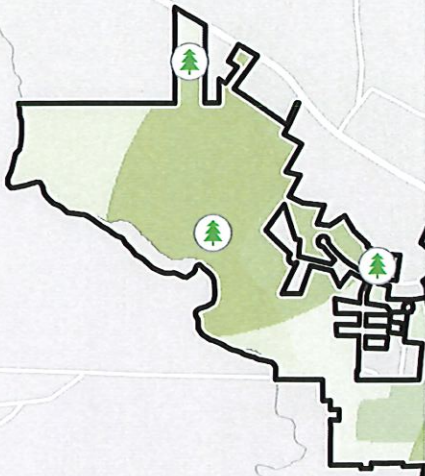
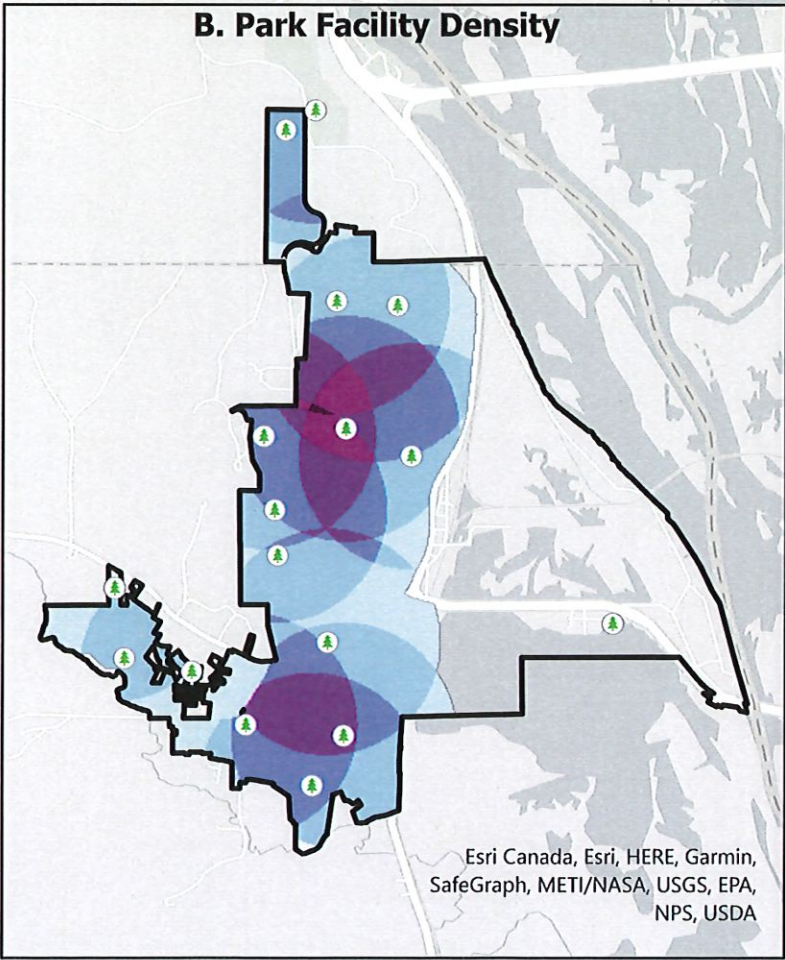
Potentially Underserved Areas

This map is an overlay of maps A and B. It represents areas that are potentially underserved. Darker areas are areas that are highly populated by do not have nearby park facilities.

What is the purpose of this map?

1. To determine if areas of La Crescent are underserved by City parks. Areas that are most underserved are shown by the darkest colors on the map. It may be beneficial for the City to take these areas into consideration when planning future parks.
2. Some parks may be subject to heavy use based on surrounding population density. These parks may require additional maintenance and repair.

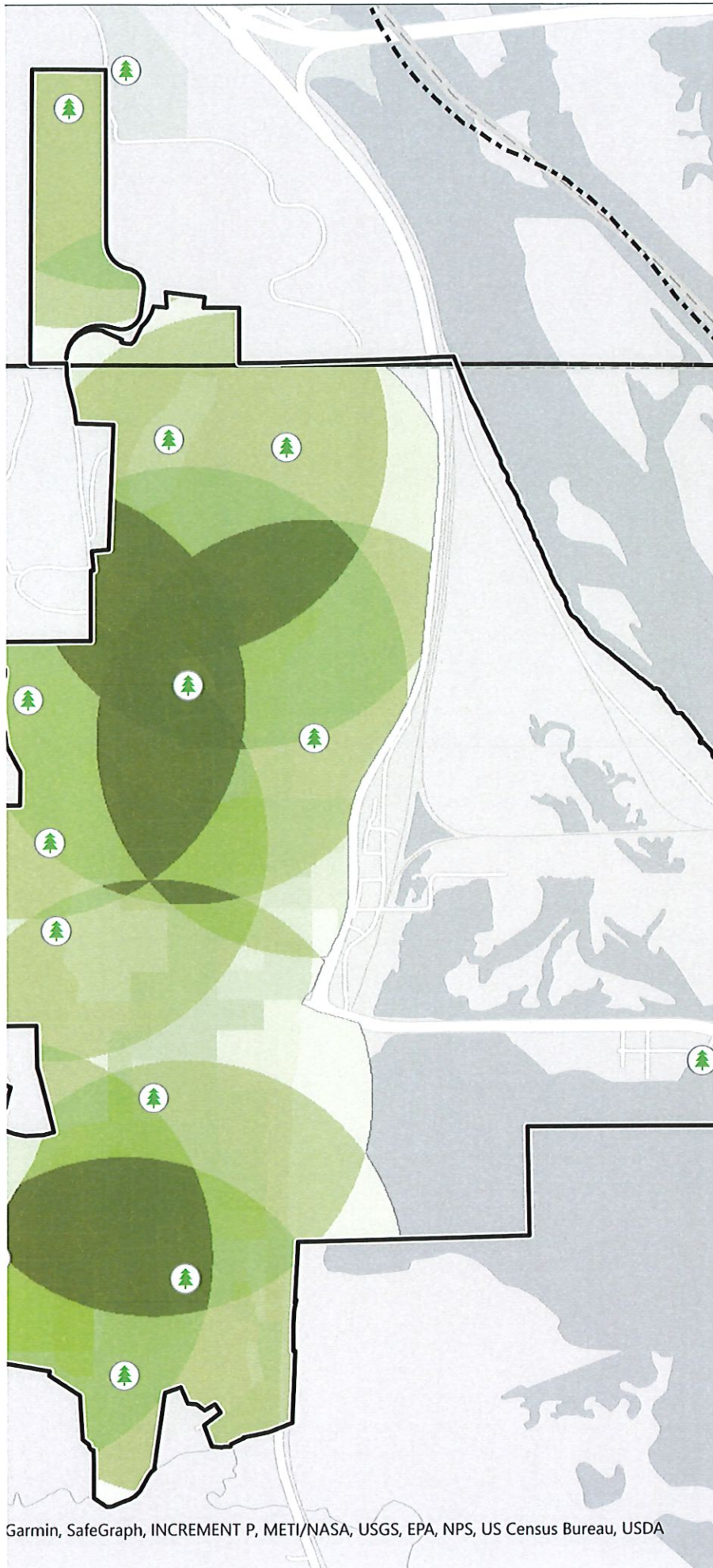
B. Park Facility Density



Potentially Underserved Areas

La Crescent CORP Study

**City of La Crescent
Houston County, MN**



Park



County Boundary



City of La Crescent



Areas Well Served by
Parks

Areas Underserved by
Parks

Data Sources:

Houston County (2021)

Comp Plan Data (2015)

MNDNR (2021)

US Census Bureau (Population Density per sq mi as of 2010 Census)
ESRI Basemap



RECOMMENDATIONS

- Consider using trail markers along all hiking trails that are more friendly to those who have a color vision deficiency (see example on the right). These markers use both text and color.
- Consider posting numbered markers along hiking trails that correspond to exact longitude/latitude coordinates to facilitate emergency rescues when needed.

additional parks, trails, food, and retail options within the city.

Administrative

- Consider updating §90.13 of the City's ordinances to allow dogs in additional parks. Currently dogs are only allowed in Vetsch, Eagles Bluff, and Vollenweider.
- Consider adopting a low impact design standard that all new parks and trails infiltrate or retain all 2 inch, 24-hour stormwater events on site. Works towards ensuring all existing trails and parks comply with this standard (Minnesota GreenSteps Program).
- Create an ArcGIS Storymap for the City's parks and trail system to increase outreach and information available to users. Storymaps are accessible from mobile phones with internet capability and could be used to facilitate self-guided naturalist and/or historical hikes in Eagles Bluff or Vollenweider/Vetsch/Stoney Point Parks.
- Consider conducting a feasibility study to explore offering an indoor sports complex for soccer, baseball, tennis, etc. This type of facility should be a shared space between the general public and private sports organizations.

Partnerships

- Partner with Outdoor Recreation Alliance (ORA) for trail maintenance at Eagles Bluff and Vollenweider/Vetsch/Stoney Point.
- Remind organizations that use city sports fields to leave them in better condition than they were found in and to remove any special movable equipment that was used.
- Partner with the School District's Community Education program to build programming that targets retirees (e.g. hiking club). Along with desirable programming, the City should prioritize expanding ADA accessibility of parks.
- Consider discussing with the Minnesota DNR the potential to make Sportsmen's Landing a trailhead for the Root River/Wagon Wheel Trails. This location could include information about the trail system and a map of La Crescent or QR code visitors could scan to open an interactive map of the City that shows

Recommendations for Existing Park Improvements

	Priority			Est. Cost
	1 - (1-3 Years)	2 - (3-5 Years)	3 - (Long Range)	(in 2022 \$)
Mini Parks				
Crescent Valley Park				
Replace pea gravel with poured-in-place surfacing or engineered wood fiber				\$50,000 PIP / \$15,000 EWF
Level parking lot				\$5,000 - \$12,000
John S. Harris Park				
Extend sidewalk in front of park				\$40,000
Fix John Harris kiosk				\$2,500 - \$5,000
Replace pea gravel with poured-in-place surfacing or engineered wood fiber				\$54,000 PIP / \$16,200 EWF
Add one or two play components for kids younger than 5				\$5,000 - \$12,000
Place ADA porta potty in park during summer months				\$800/year
Neighborhood Parks				
Valley South Park				
Add restrooms				\$100,000 - \$150,000
Update playground				\$60,000 - 80,000
Replace pea gravel with poured-in-place surfacing or engineered wood fiber				\$46,000 PIP / \$13,800 EWF
Add pet waste station				\$1,000
Wieser Memorial Park				
Implementation of Master Plan A				\$3,966,900
Implementation of Master Plan B				\$3,385,900

	Priority			Est. Cost
	1 - (1-3 Years)	2 - (3-5 Years)	3 - (Long Range)	(in 2022 \$)
Community Parks				
Abnet Field				
*Add pickleball courts (6) that can overlaid with an outdoor skating rink during winter months.				\$240,000
Add open air shelter or shade structures near proposed pickleball courts				\$60,000 - \$200,000
Add playground equipment outside of Ice Arena at SE corner				\$120,000 - \$160,000
Extend sidewalk at NE corner of park to connect to ballfields and shelter.				\$18,000
Remove orange posts on west side of park				maintenance
Add batting cage				\$10,000
Add score board				\$10,000
Replace existing open air shelter with a new shelter that contains restrooms, concessions, and storage for sport orgs/city use (12x10 or 12x16)				\$350,000 - \$600,000
Partner with the School District to add dugout roofs				TBD
Add lighting to ballfields				\$130,000 - \$160,000
Add skate/bike park				\$300,000 - \$600,000 +
Frank J. Kistler Memorial Park				
*Add neighborhood switchback (due to topography) connection off of the cul-de-sac on 6th Street South				\$24,000 - \$35,000
Replace pea gravel with poured-in-place surfacing or engineered wood fiber				\$240,000 PIP / \$72,000 EWF
Old Hickory Park				
*Establish prairie plantings in stormwater retention area. Mow plantings every fall so this area can still be used for sledding.				\$18,000 - \$36,000
*Add path connecting sidewalk along Red Apple Dr to basketball court, playground/shelter, and ballfield				\$24,000
*Pave gravel parking lot serving the shelter and playground area				\$36,000 - \$40,000
Add storage space onto existing shelter (12x10 or 12x16)				\$18,000 - \$25,000
Add concessions onto existing shelter				\$120,000 - \$180,000
Consider as an alternative for ice rink if not at Abnet Field				TBD
Add scoreboard				\$10,000
Add bleachers to ballfield				\$12,000 - \$18,000
Veteran's Park				
*Add a community amphitheater that can be used for concerts or rented out for weddings				\$250,000 - \$300,000
Add drinking fountain				\$10,000
Add narrow canopy with solar over portion of parking lot to be used by Farmers Market (similar to Cameron Park in La Crosse)				\$300,000 - \$375,000
Add standalone storage space (12x10 or 12x16)				\$18,000 - \$25,000
Consider addition of pump track				\$250,000-\$500,000
Add sidewalk connection from playground to Park Street, connect to N 4th Street sidewalk				\$30,000
Move skate park to Abnet Field				N/A
Install Donated Scoreboard				N/A

	Priority			Est. Cost
	1 - (1-3 Years)	2 - (3-5 Years)	3 - (Long Range)	(in 2022 \$)
Nature Preserve				
North End Park				
*Add walking trails				\$45,000 - \$90,000
Consider adding dog park (1/2-1 acre minimum)				\$32,000-\$45,000
Buckthorn removal needed where rows apple trees were previously removed.				\$6,500 - \$36,000
Explore feasibility with Winona County of adding crosswalk from Apple Blossom Park to North End Park				\$25,000
Eagles Bluff Park				
<u>Points of Interest</u>				
*Establish picnic areas and scenic overlooks (4)				\$2,000 - \$10,000 each
At lookouts add benches and informational signage about bluffs/La Crescent history and map/swing bridge				\$2,500 each
Add informational signage and bench at Maple Forest				\$5,000
<u>Parking</u>				
Create off-street parking on east side of park-possibly at booster station (4-6 stalls)				\$6,000 - \$12,000
Create on-street parking at Old Hickory (4-5 stalls)				\$2,500
<u>Trail Signage & Wayfinding</u>				
Add trail markers (~30 ea.) along segments and maps with "you are here" indications (~10 ea.)at points where trails connect				\$50 each marker; \$500 each sign
Add trail sign that runs perpendicular to road at lower junction of Red Apple Trail and Red Apple Rocks Trail				\$500 each
Add signage and kiosks at both entrance points to better identify park. Park signs should run perpendicular to the road.				\$5,000 each
Add private property signage along east end of park to indicate where park property lines end				\$500 each
<u>Trail Improvements</u>				
Flatten/level and widen trail on east side of Park				\$10,000 - \$25,000
<u>Invasives</u>				
Selective cutting of invasives (oriental bittersweet, eastern red cedar, and buckthorn)				\$46,000 - \$58,000
<u>Native Plantings</u>				
Establish prairie plantings at west entrance to Eagles Bluff Park				\$20,000 - \$35,000
Establish prairie plantings off of McIntosh E Stormwater access road				\$30,000 - \$45,000

	Priority			Est. Cost
	1 - (1-3 Years)	2 - (3-5 Years)	3 - (Long Range)	(in 2022 \$)
Horsetrack Meadows				
<u>Points of Interest</u>				
Install access points along trail for fishing on Pine Creek				\$5,000 - \$20,000 each
Add picnic area near proposed parking				\$45,000
<u>Parking</u>				
Install small off-street parking lot on west side (8-10 cars)				\$12,000 - \$18,000
<u>Trail Signage & Wayfinding</u>				
Install entrance signs (1) /trail sign (3)				\$5,000 / \$500 each
Groom trails for cross country skiing in winter months and consider a snow shoe trail that parallels cross country trails				Equipment (\$5,000 +), Signage (\$2,500), and Maintenance
Install signage prohibiting ATV use on trail				\$500 each
<u>Trail Improvements</u>				
Selective cutting to reveal trail around park				Maintenance
Improve existing 10' multi-use path (gravel)				\$125,000
Mow walking path around prairie				Maintenance
<u>Native Plantings</u>				
Plant 7 acre prairie with path through or around prairie				\$20,000 - \$36,000
Vetsch Park				
<u>Points of Interest</u>				
Consider Council Ring Overlook near existing gazebo				\$35,000 - \$60,000
Selective cutting to revive overlook where gazebo is located				\$20,000
Improve vacant property with a butterfly garden				\$8,000-\$12,000
Expand Solar Array				Grant Eligible?
Add benches				\$2,500 each
<u>Trail Signage & Wayfinding</u>				
Add trail markers (~35 ea.) along segments and maps with "you are here" indications (~20 ea.)at points where trails connect				\$50 each marker; \$500 each sign
Improve trail entrance off of 1st St.				\$2,000
<u>Trail Improvements</u>				
Make wildlife loop ADA accessible				\$30,000 - \$45,000
Repair erosion along Trail (south side)				\$10,000 - \$18,000
<u>Invasives</u>				
Garlic Mustard Removal				\$5,000 - \$20,000
<u>Other Amenties</u>				
Dog Park (Between 2nd and 1st)				\$40,000 - \$56,000
Vollenweider Park				
<u>Trail Signage & Wayfinding</u>				
Add trail markers (~4 ea.) along segments and maps with "you are here" indications (~1 ea.)at points where trails connect				\$50 each marker; \$500 each sign
<u>Trail Improvements</u>				
Develop trail throughout Park starting at connection in Vetsch. Trail should run by rock outcroppings (see 2016 Blufflands Plan)				\$40,000 - \$60,000
Add trail entrance off of Crescent Hills Dr and August Hills Dr				\$5,000 each

	Priority			Est. Cost
	1 - (1-3 Years)	2 - (3-5 Years)	3 - (Long Range)	(in 2022 \$)
Special Purpose Parks				
Blue Lake				
-				
Protected Blufflands (not City Parks)				
Stoney Point				
<u>Points of Interest</u>				
At Stoney Point lookout include informational signage about wildflowers. Ensure signage does not obstruct views.				\$5,000
Consider expanding solar here				Grant Eligible?
<u>Parking</u>				
Add access point and parking lot off of 7th St				\$10,000 - \$12,000
<u>Trail Signage & Wayfinding</u>				
Clearly mark property entrances, including those along Stoney Point Rd.				\$500 each
Add private property signage along east end of park to indicate where park property lines end				\$500 each
Install signage where mountain bike trails cross hiking trail				\$500 each
Add trail markers (~35 ea.) along segments and maps with "you are here" indications (~15 ea.) at points where trails connect				\$50 each marker; \$500 each sign
<u>Trail Improvements</u>				
Reach out to IMBA to explore feasibility of and possibly design a mountain biking course				TBD
If mountain biking trails are developed consider using for snowshoe and/or fat tire biking during winter months.				Signage (\$2,500), and Maintenance
Remove section of trail that is located on private property				maintenance
Add erosion control measures on east approach to Stoney Point (east approach is easier climb than west approach)				\$15,000 - \$24,000
<u>Invasives</u>				
Buckthorn removal				\$15,000 - \$24,000
<u>Native Plantings</u>				
Establish prairie plantings in open grass areas				\$5,000 + per acre
Add restroom, shelter and drinking water on NE portion of property				\$250,000 - \$400,000
* denotes items carried forward from previous Park Plan				