



Walnut Street Corridor Plan

Public Input Meeting, June 14th 2023

City of La Crescent, Minnesota



MSA

planning + design
studio

WHO WE ARE



Steve Tremlett, AICP, CHU-A
Principal in Charge



Brad Vowels-Katter
Project Manager, Lead Designer



Emily Herold
Project Planner



Growing from River to Ridge



Dan Schmitt, PLA, CPSI, CPO
Landscape Architect



Brian Hulbregtse, PE, PTOE
Traffic Engineer



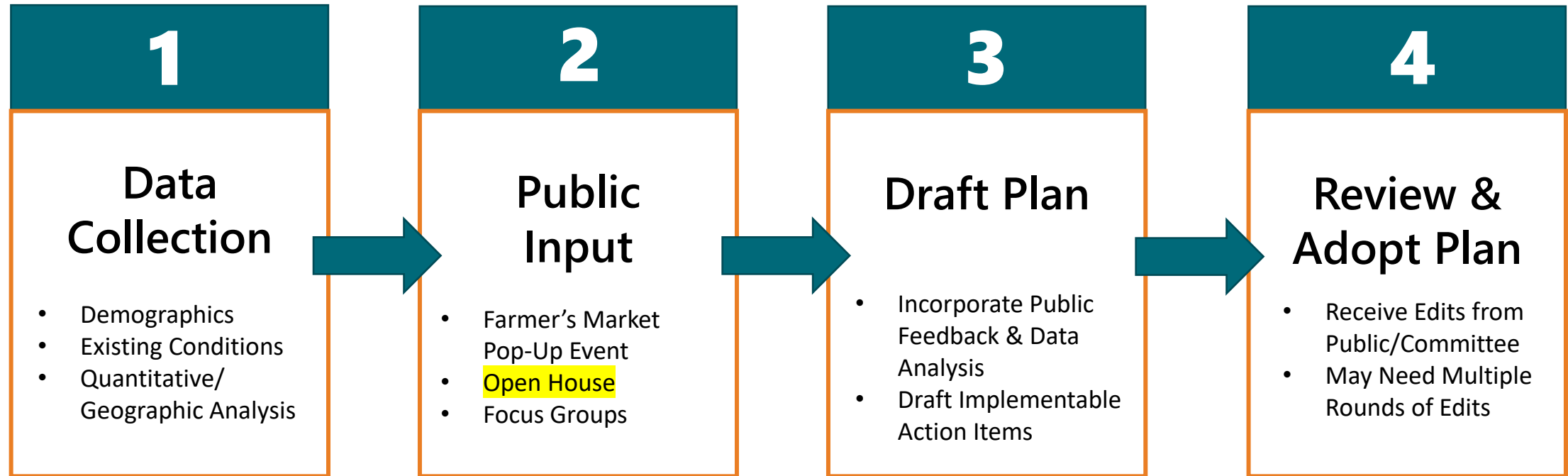
Jason Valerius, AICP
Client Liaison

Project Goals and Objectives

- **Reimagine the Walnut Street corridor** into a lively, walkable/bikeable complete street that appeals to both community residents and visitors.
- **Enhance accessibility, connectivity, and vitality** of Walnut Street and directly adjacent areas.
- Generate valuable feedback through **purposeful, engaging public input activities.**
- **Develop recommendations** that are supported by information from existing community planning documents, existing conditions analysis, public input, and best practices.
- **Create a detailed action plan** for the City to lean on during implementation.



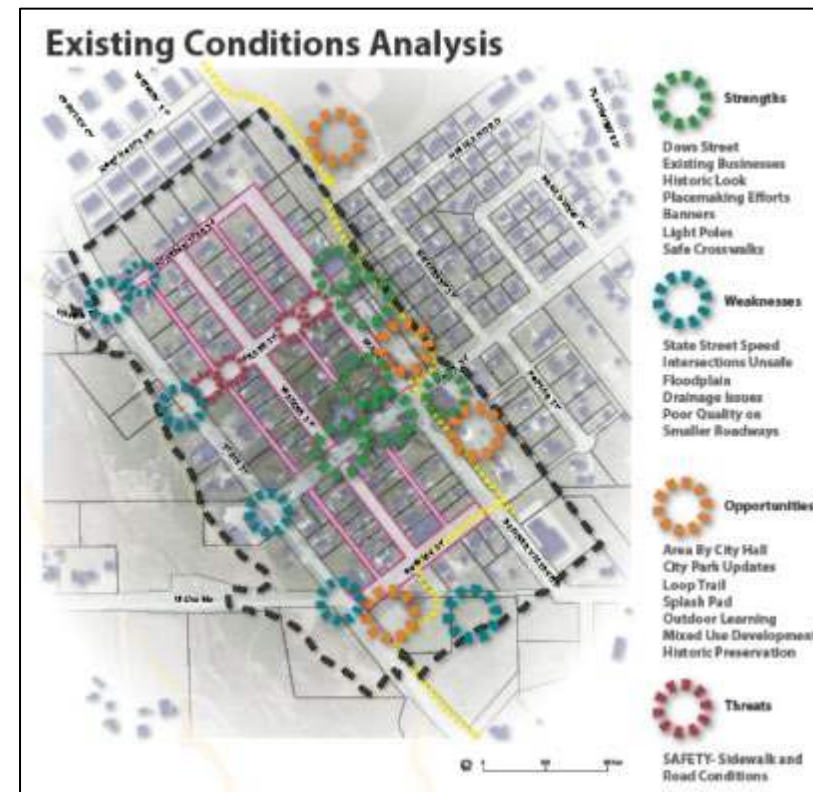
Project Timeline



Plan Elements

- Summary of public engagement
- Analysis of La Crescent’s existing planning documents
- Goals, strategies, and outcomes for revitalization of Walnut Street
- Specific project-oriented recommendations and implementation strategies for Walnut Street, including cost estimates and funding sources

| Old Town Ely Priorities | | Fiscal Year | | | | Description |
|---|--|--|------|------|------|--|
| | | 2021 | 2022 | 2023 | 2024 | |
| STREETCAMS PRELIMINARY & FINAL DESIGN | Pending City, Grants, TP Furnishes City Department, Consultants | | ✓ | | | • Preliminary Engineering to determine the overall layouts, profiles, design element locations and preliminary construction details. |
| | COMPREHENSIVE PLAN AND PARK MASTER PLAN | Pending City, Grants, TP Furnishes City Department, Consultants | | | ✓ | • Project phasing to determine the various ways and order in which the project will be completed. |
| | | Pending City, Grants, TP Furnishes City Department, Consultants | | | ✓ | ✓ |
| | MULTI-PHASE PROJECT ROADWAY, UTILITY AND STREETSCAPE IMPROVEMENTS | Pending City, Grants, TP Furnishes City Department, Consultants | | | ✓ | ✓ |
| ADDITIONAL PLACEMAKING & PLACEMAKING IMPROVEMENTS | Pending City, Grants, TP Furnishes City Department, Consultants | | | | ✓ | • Determine if when, and where future placemaking and wayfinding features may be incorporated throughout Old Town Ely. |

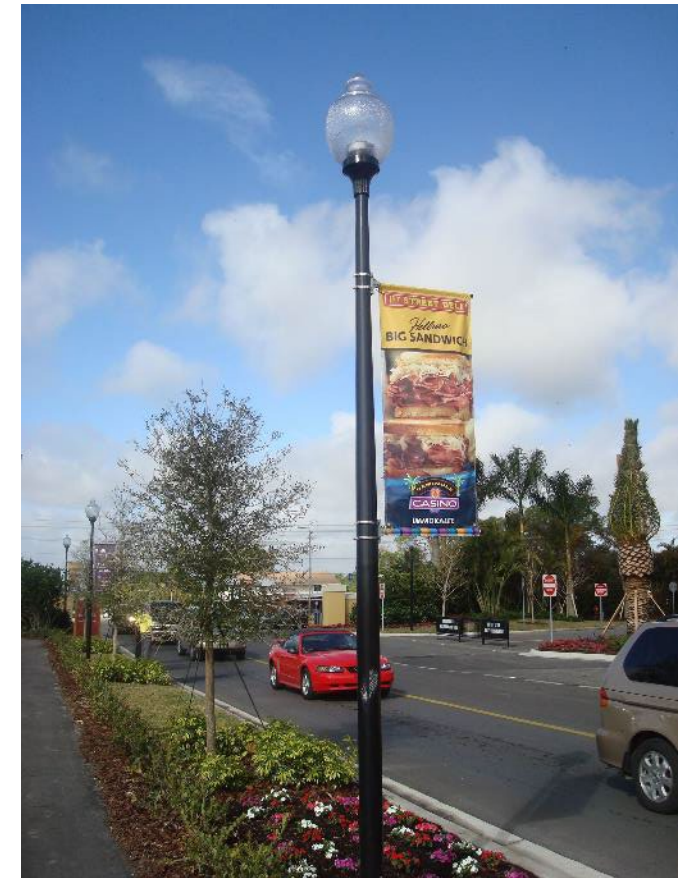


PROJECT AREA

Streetscape Elements

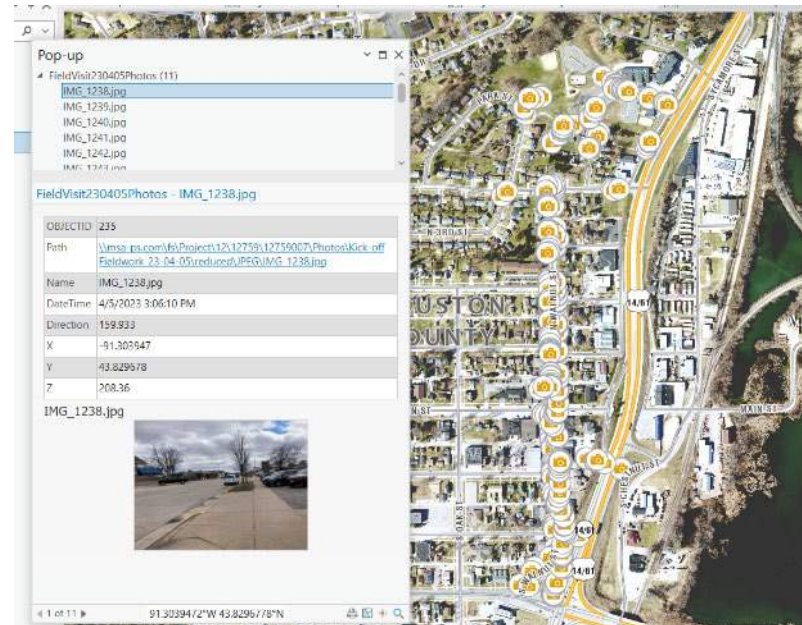
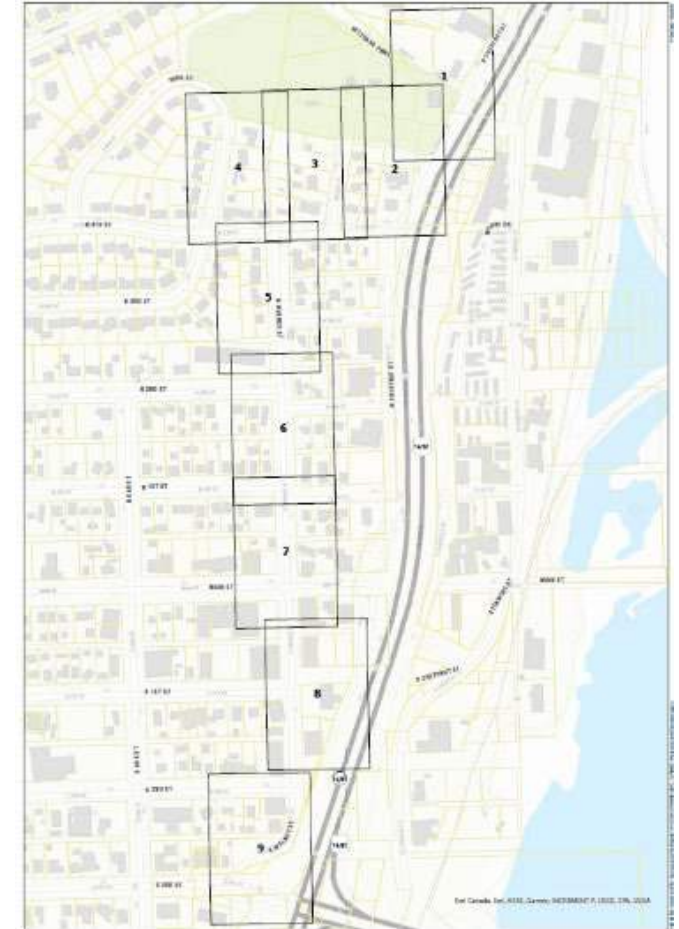
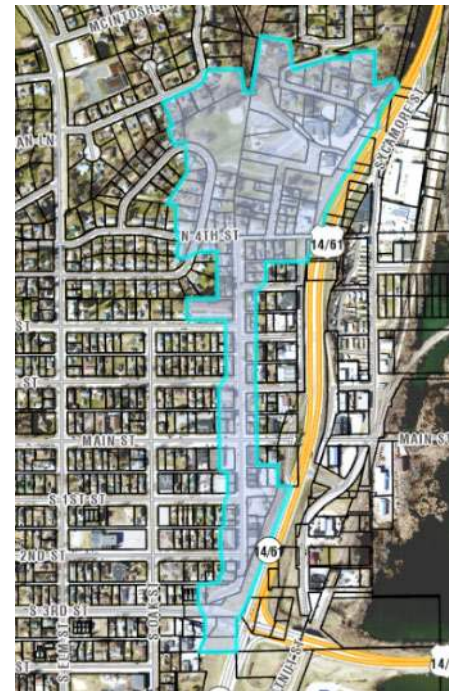
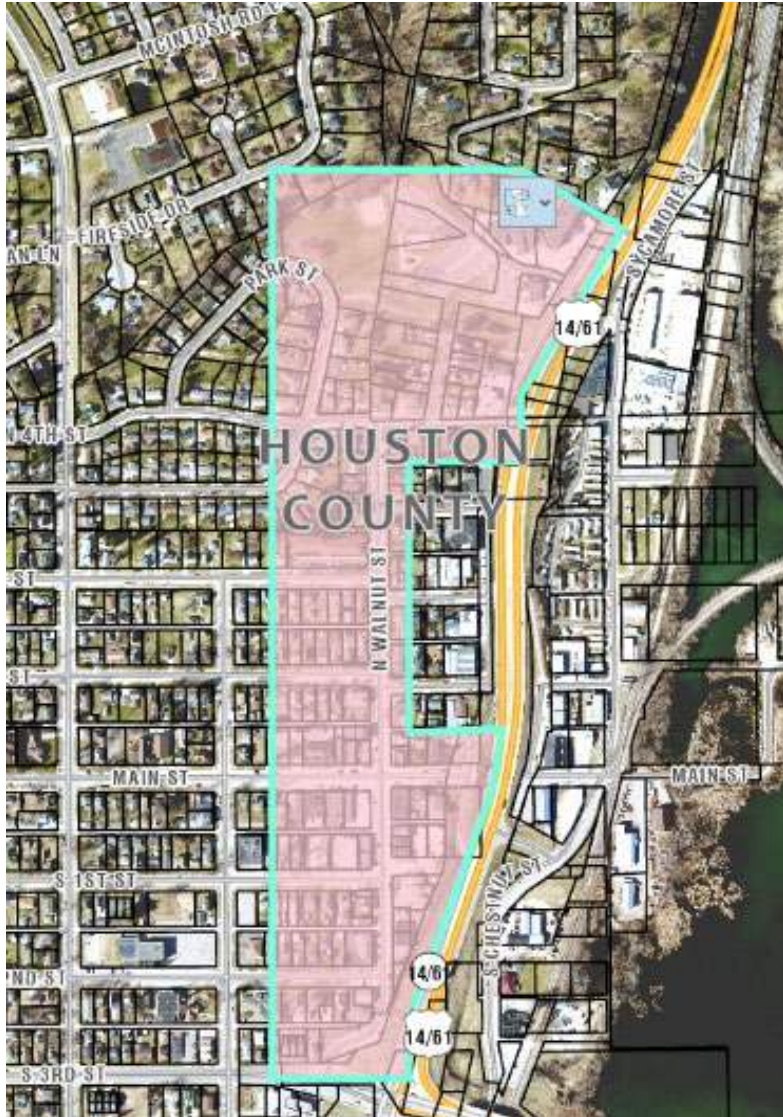


WALNUT STREET CORRIDOR PLAN



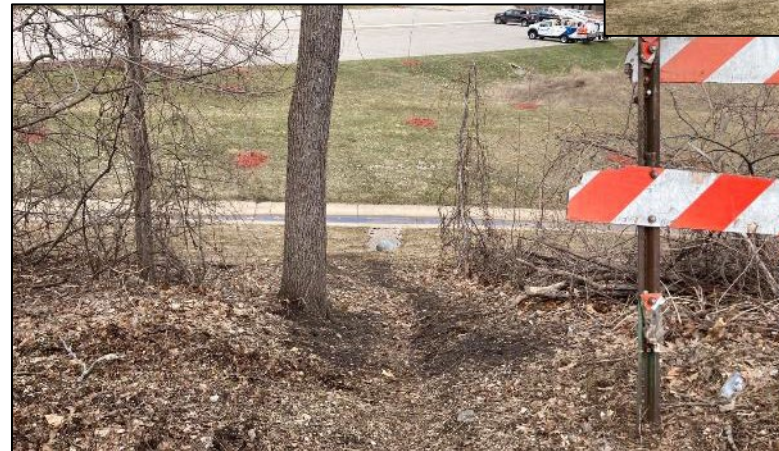
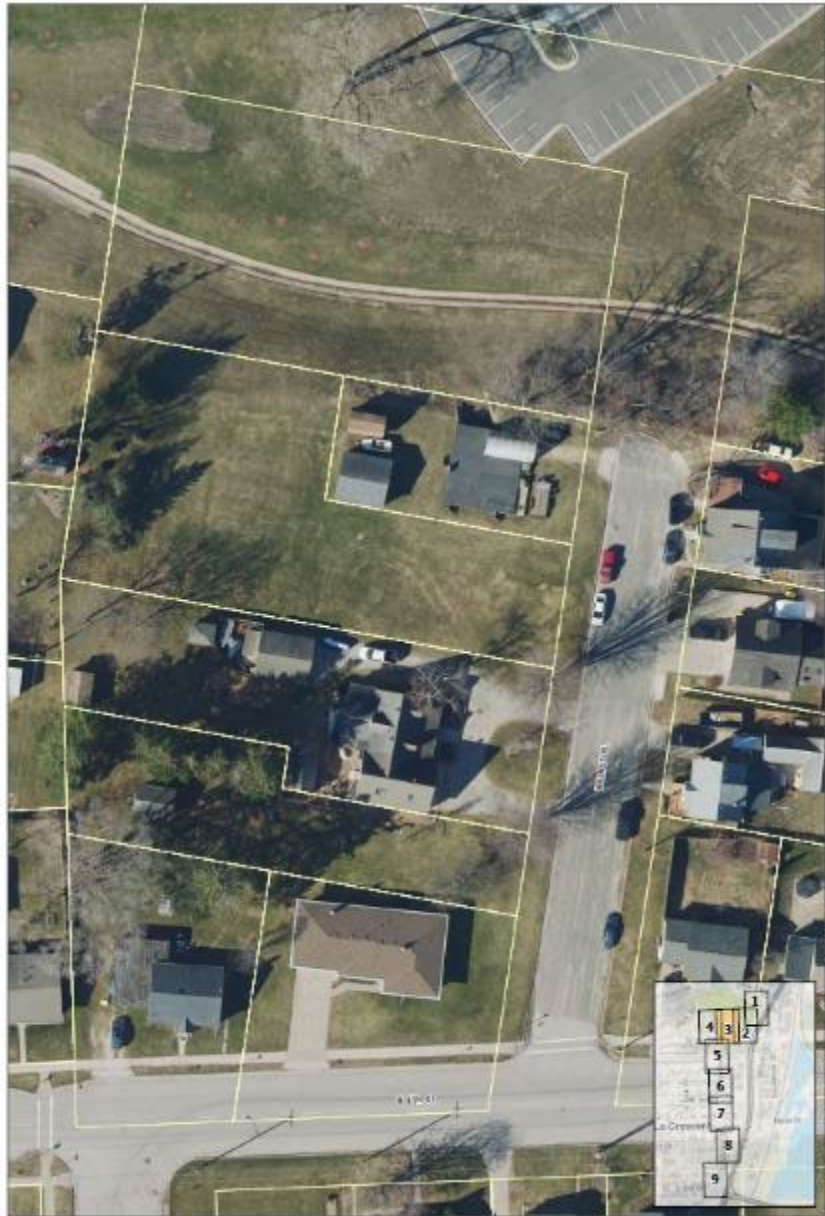
Project Study Area

Project Study Area

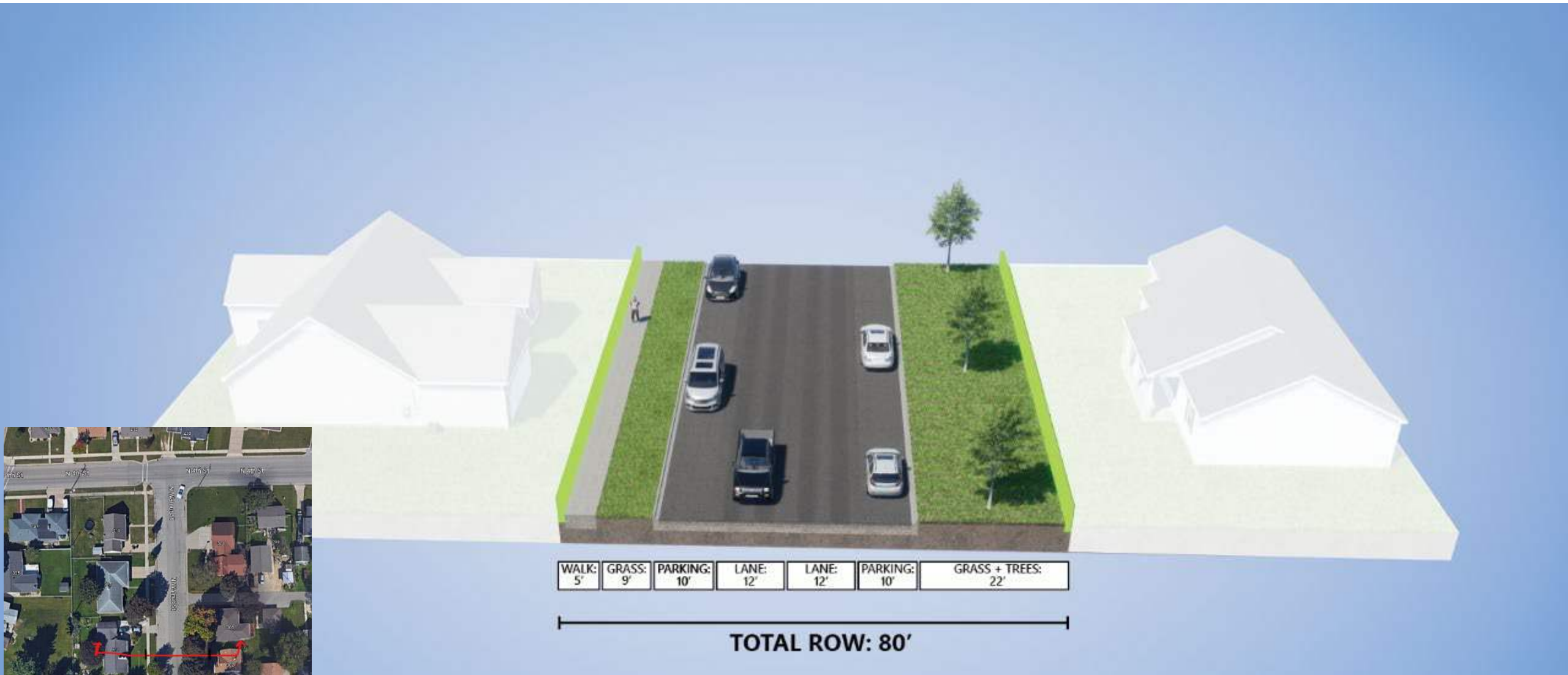








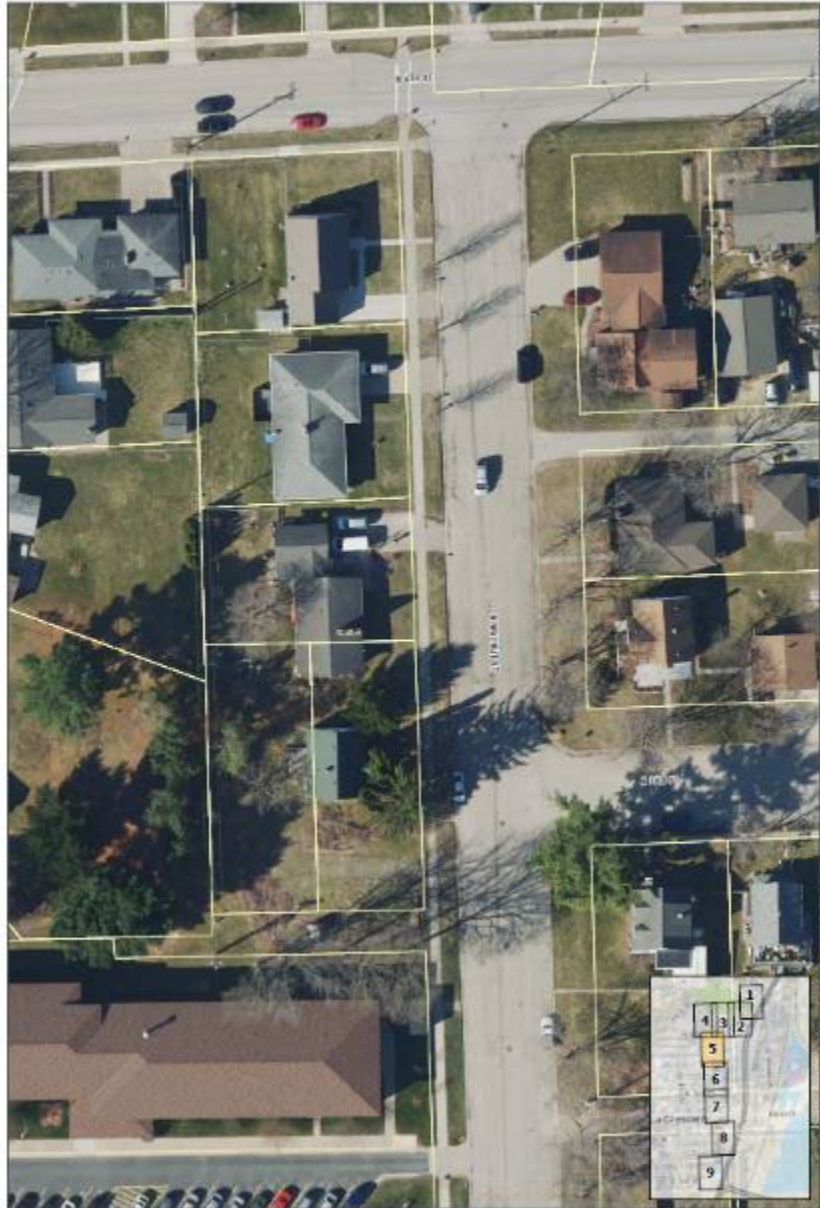




| | | | | | | |
|-------|--------|----------|-------|-------|----------|----------------|
| WALK: | GRASS: | PARKING: | LANE: | LANE: | PARKING: | GRASS + TREES: |
| 5' | 9' | 10' | 12' | 12' | 10' | 22' |

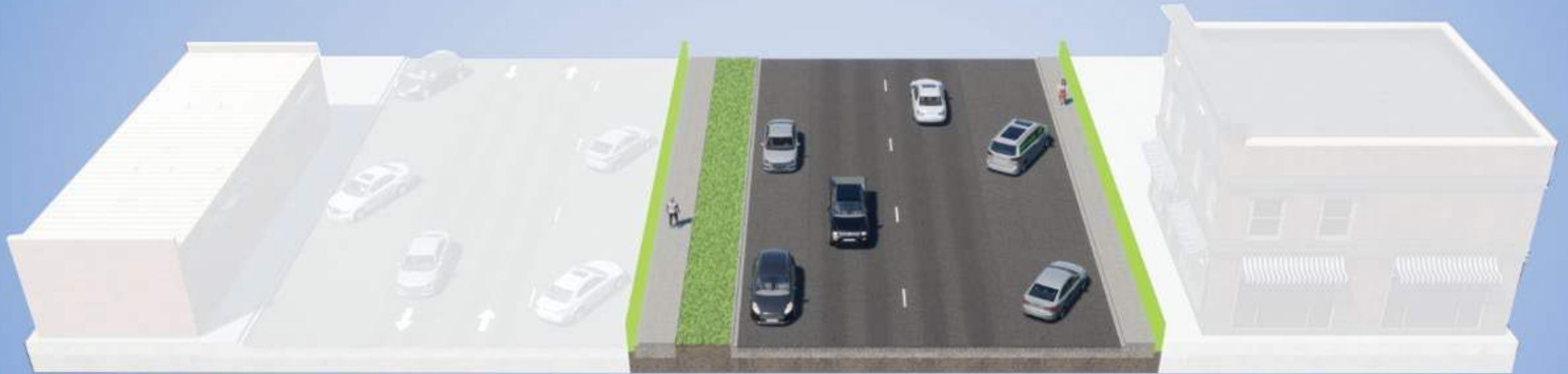
TOTAL ROW: 80'







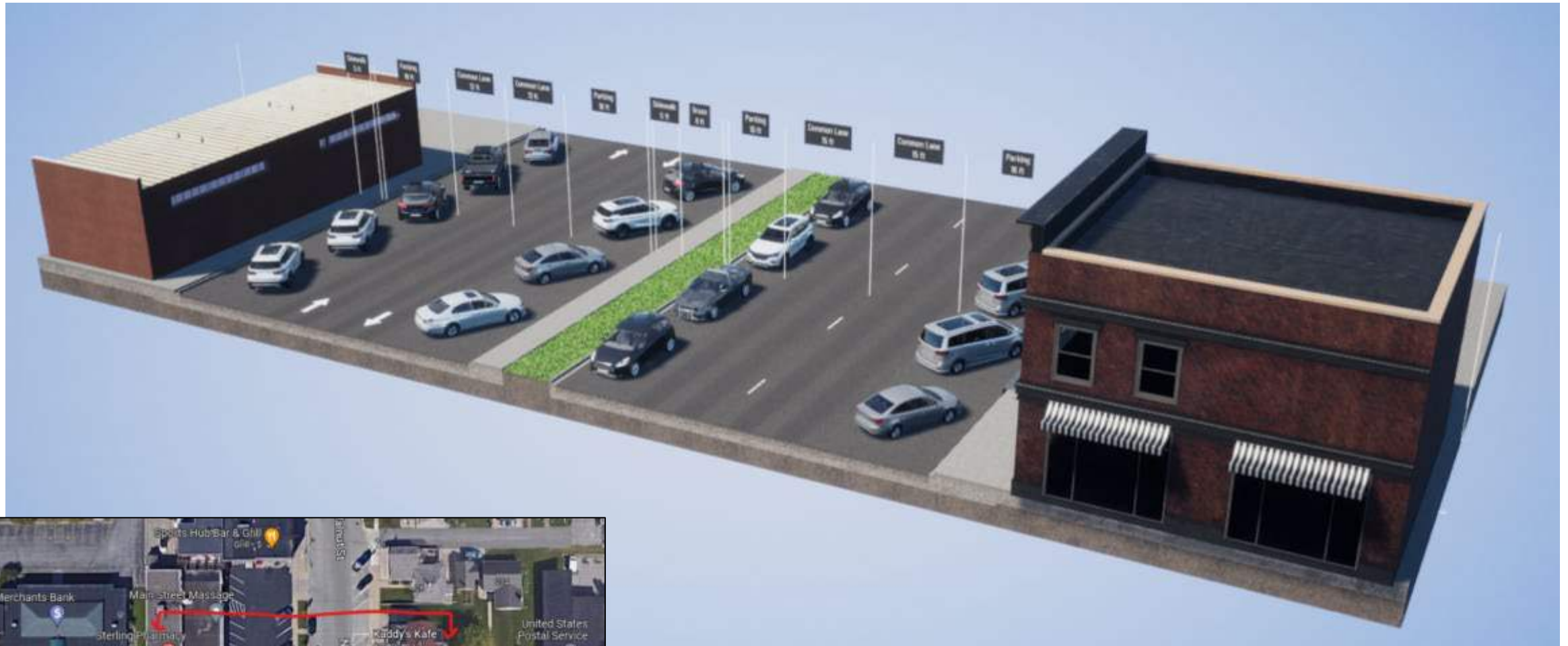




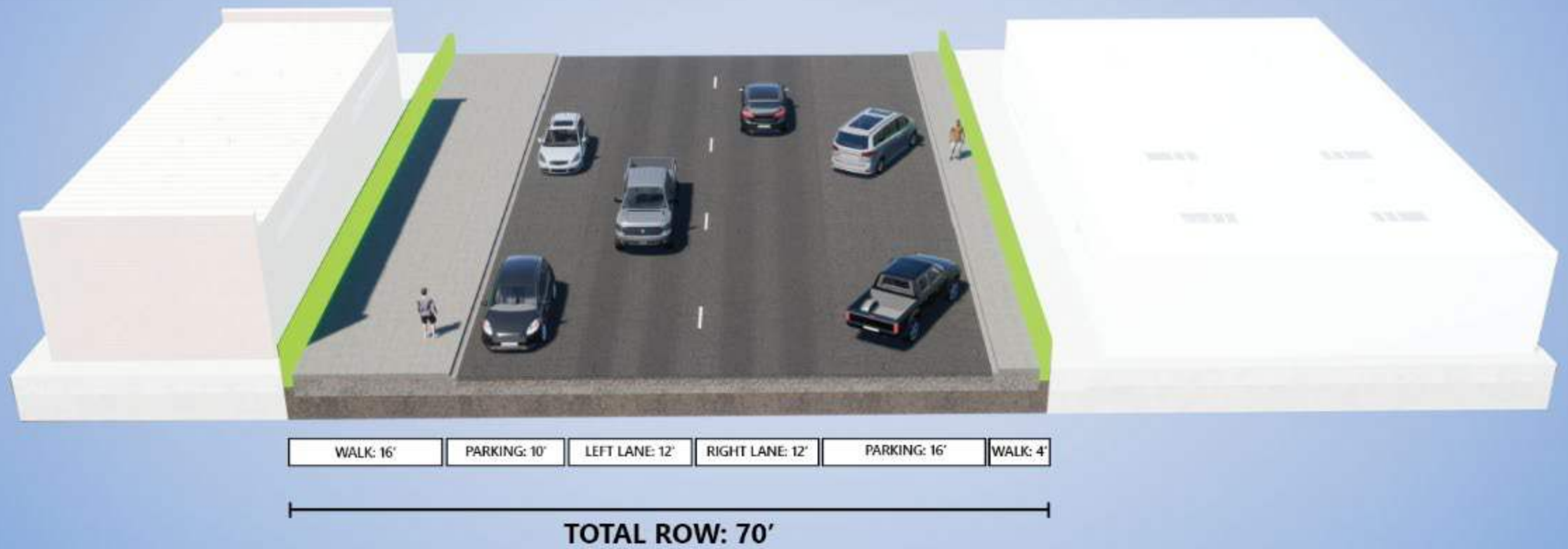
| | | | | | | |
|-------------|--------------|-----------------|-------------------|--------------------|-----------------|-------------|
| WALK: 5' | GRASS: 9' | PARKING: 10' | LEFT LANE: 12' | RIGHT LANE: 12' | PARKING: 16' | WALK: 6' |
|-------------|--------------|-----------------|-------------------|--------------------|-----------------|-------------|



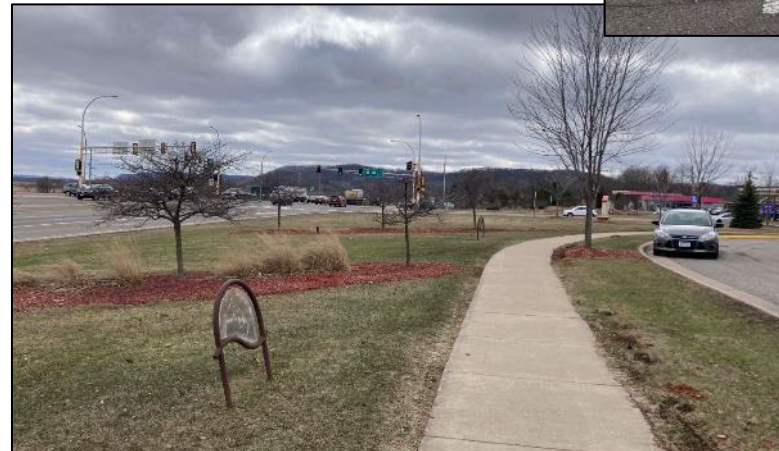
TOTAL ROW: 70'













Thank you for coming!

Please take some time to browse and provide comments on the materials around the room

