

**RECYCLING
COLLECTION
WITH THIS
NEW CART
WILL BEGIN
APRIL 1, 2019**

SERVCE INFORMATION INSIDE PACKET

COLLECTION with recycling CART BEGINS

APRIL 1, 2019

first collection day will be April 10th, 2019. Only use new carts supplied by Hilltopper on that date and thereafter.

PLACEMENT GUIDELINES – In most cases, carts were delivered to front of your home so delivery crew could record cart number to your address. Once delivered please place cart where you have your refuse and recycling serviced now.

PLACEMENT TIPS

- Make sure the arrows on the lid are pointing out towards the street.
- Carts should be placed out at the end of your driveway/alley way approximately 1 foot from the road edge. Do not place your cart in the street/alley way!
- Carts must be placed at least 3 feet from obstacles such as other carts/trash bags, utility poles, mailboxes, trees or parked cars.
- Position the cart on as level of a surface as possible.
- Please place carts in the same location as you have always placed your weekly trash/recycling for collection.

COLLECTION TIPS

- Please have the carts out by 7 a.m. on your designated collection day
- All recycling must fit inside the cart. Additional recycling outside of cart will not be picked up. Call Hilltopper for hauling of additional material options.
- Please refer to flyer as more material has been added that can be recycled.
- Lids need to be closed to a substantial degree.
- In winter; clear a place at your collection point so the cart sits flat. Carts will not be collected if placed on a snow bank.
- Carts need to sit on a level surface.
- If cart is not placed out properly or the driver has an issue with the cart, a tag will be placed on the cart to notify you of the issue. If the issue is not resolved by the following pick up day, the cart will not be serviced.

CART CARE & OTHER INFORMATION

- Each cart is stamped with a number that is specifically assigned to your address. If your cart is stolen, Hilltopper will attempt to locate by keeping our eyes open for any extra

carts sitting at a home that should only have one cart. If we do not succeed, the replacement fee of \$80 plus tax will apply.

- **Do not** permanently mark or spray paint on carts; it will be considered graffiti. The carts are the property of Hilltopper Refuse and Recycling Service Inc. You may put tape on the cart to distinguish it from your neighbors', if desired, or use a zip tie or luggage tag.
- **Do not** take carts with you when you move. The carts are the property of Hilltopper and are assigned to each street address.

Damaged Carts:

- If the collection truck damages the carts or damage occurs from normal wear and tear, Hilltopper Refuse & Recycling Service Inc. will repair or replace the cart at no charge to you.
- Damage resulting from negligence or abuse by the resident will be the responsibility of the resident.
- Replacement fee for the cart is \$80 plus tax.

Additional Carts:

- If you consistently have an overflowing cart, you may rent an additional cart directly from Hilltopper Refuse & Recycling Service Inc.
- The Resident will be billed directly from Hilltopper for the additional service.
- Only Hilltopper issued carts will be collected.
- Billing is done annually with services paid for in advance of collection to receive collection.
- Call Hilltopper for more information and pricing details at 608-783-6727.
- Or email Gary/sales at gh@hilltopperrefuse.com

Green Recycle Bins:

- Re-purpose your old recycle bin for another use if at all possible. (Examples dog food container, bird seed storage container, etc.)

Refuse

Refuse in your community has not changed. Use your city trash bags or you can contact Hilltopper Refuse & Recycling for carts for trash removal. Please contact Gary/Sales at gh@hilltopperrefuse.com or direct line 608-783-6727 ext 106



Starts April 2019

Single Stream Recycling

A New System; A New Cart.
Please Read Below:

Place ONLY Recyclable Items Loose In Recycling Cart with Yellow Lid Cart:

Paper & Cardboard

Newspapers, Magazines, Cardboard, Cereal Boxes, Paperback Books, Phone Books, Paper Bags, Mail/Junk Mail, Cartons



Glass & Plastic #1 & #2

Glass Bottles & Jars

Plastic #1 & #2



Metal

Pots & Pans, Aluminum Bottles & Cans, Empty Aerosol Cans, Aluminum Foil, Tin and Steel Cans



Wires

Christmas Lights

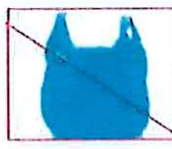
Extension Cords

Power Cords

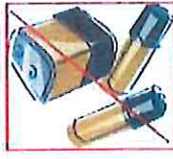


RECYCLE THESE

Do NOT Place These Items In This Cart:



Plastic Bags



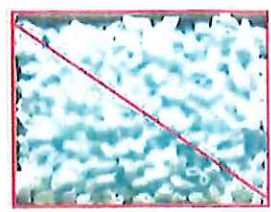
Batteries



Photographs



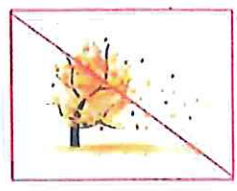
Styrofoam



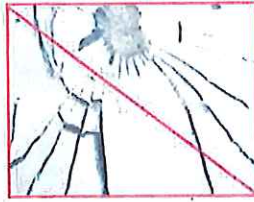
Packing Peanuts



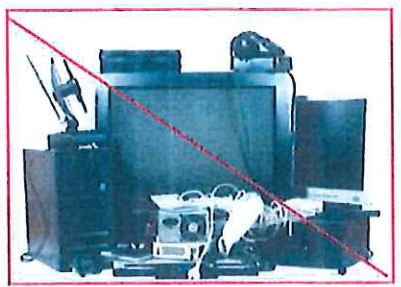
Trash



Yard Waste



Glass from mirrors or windows



Electronics

DO NOT RECYCLE THESE

City of La Crescent 2019

January							February							March						
Su	M	T	W	Th	F	Sa	Su	M	T	W	Th	F	Sa	Su	M	T	W	Th	F	Sa
		1	2	3	4	5						1	2						1	2
6	7	8	9	10	11	12	3	4	5	6	7	8	9	3	4	5	6	7	8	9
13	14	15	16	17	18	19	10	11	12	13	14	15	16	10	11	12	13	14	15	16
20	21	22	23	24	25	26	17	18	19	20	21	22	23	17	18	19	20	21	22	23
27	28	29	30	31			24	25	26	27	28			24	25	26	27	28	29	30
														31						
April							May							June						
Su	M	T	W	Th	F	Sa	Su	M	T	W	Th	F	Sa	Su	M	T	W	Th	F	Sa
	1	2	3	4	5	6				1	2	3	4							1
7	8	9	10	11	12	13	5	6	7	8	9	10	11	2	3	4	5	6	7	8
14	15	16	17	18	19	20	12	13	14	15	16	17	18	9	10	11	12	13	14	15
21	22	23	24	25	26	27	19	20	21	22	23	24	25	16	17	18	19	20	21	22
28	29	30					26	27	28	29	30	31		23	24	25	26	27	28	29
														30						
July							August							September						
Su	M	T	W	Th	F	Sa	Su	M	T	W	Th	F	Sa	Su	M	T	W	Th	F	Sa
	1	2	3	4	5	6					1	2	3	1	2	3	4	5	6	7
7	8	9	10	11	12	13	4	5	6	7	8	9	10	8	9	10	11	12	13	14
14	15	16	17	18	19	20	11	12	13	14	15	16	17	15	16	17	18	19	20	21
21	22	23	24	25	26	27	18	19	20	21	22	23	24	22	23	24	25	26	27	28
28	29	30	31				25	26	27	28	29	30	31	29	30					
October							November							December						
Su	M	T	W	Th	F	Sa	Su	M	T	W	Th	F	Sa	Su	M	T	W	Th	F	Sa
		1	2	3	4	5						1	2	1	2	3	4	5	6	7
6	7	8	9	10	11	12	3	4	5	6	7	8	9	8	9	10	11	12	13	14
13	14	15	16	17	18	19	10	11	12	13	14	15	16	15	16	17	18	19	20	21
20	21	22	23	24	25	26	17	18	19	20	21	22	23	22	23	24	25	26	27	28
27	28	29	30	31			24	25	26	27	28	29	30	29	30	31				

KEY:



Holidays: All collections these days will be a day late



Trash



Recycling